

V1684

EASY/FACILE

MISSES' SKIRT: Fitted, lined wrap skirt with shaped hemline, hook and bar closure, contrast variation. **FABRICS:** Faille, Crepe, Sateen, Poplin. Unsuitable for obvious diagonals. *With Nap. **Without Nap.

Combinations: **A5**(6-8-10-12-14), **E5**(14-16-18-20-22)

Sizes	6	8	10	12	14	16	18	20	22
A 45"/**	2	2	2 1/8	2 1/8	2 1/8	2 1/4	2 1/4	2 3/8	2 3/8
60"/**	1 3/8	1 3/8	1 1/2	1 1/2	1 1/2	1 5/8	1 5/8	1 7/8	1 7/8
Contrast A									
45, 60"/**	1 1/4	1 1/4	1 1/4	1 1/4	1 1/4	1 1/4	1 3/8	1 3/8	1 3/8
B 45"/**	2 5/8	2 5/8	2 5/8	2 7/8	2 7/8	2 7/8	2 7/8	2 7/8	2 7/8
60"/**	2 1/8	2 1/8	2 1/8	2 1/8	2 1/8	2 1/8	2 3/8	2 3/8	2 1/2
Lining A,B									
45"/**	1	1	1	1	1 3/4	1 3/4	1 3/4	1 3/4	1 3/4
Fusible Interfacing A,B									
18, 20"	5/8	5/8	5/8	5/8	5/8	3/4	3/4	3/4	3/4

NOTIONS: Two 1/2" (1.3cm) Buttons, Four Pairs of Hooks and Bars.

FINISHED GARMENT MEASUREMENTS

Back length from base of neck

A,B	26	26	26	26	26	26	26	26	26
-----	----	----	----	----	----	----	----	----	----

JUPE (J. FEMME): Jupe portefeuille ajustée, doublée, à ligne d'ourlet en forme, fermeture à crochet pour jupe, variation de contraste. **TISSUS:** Faille, Crêpe, Satin de Coton, Popeline. Grandes diagonales ne conviennent pas. *Avec Sens. **Sans Sens.

Séries: **A5**(6-8-10-12-14), **E5**(14-16-18-20-22)

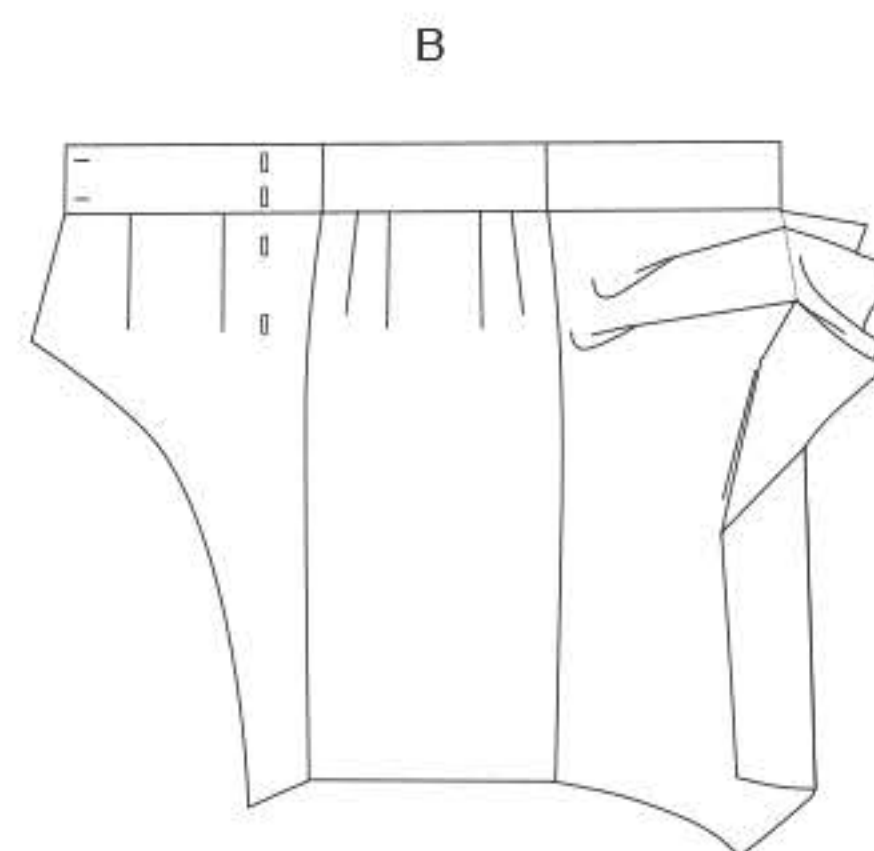
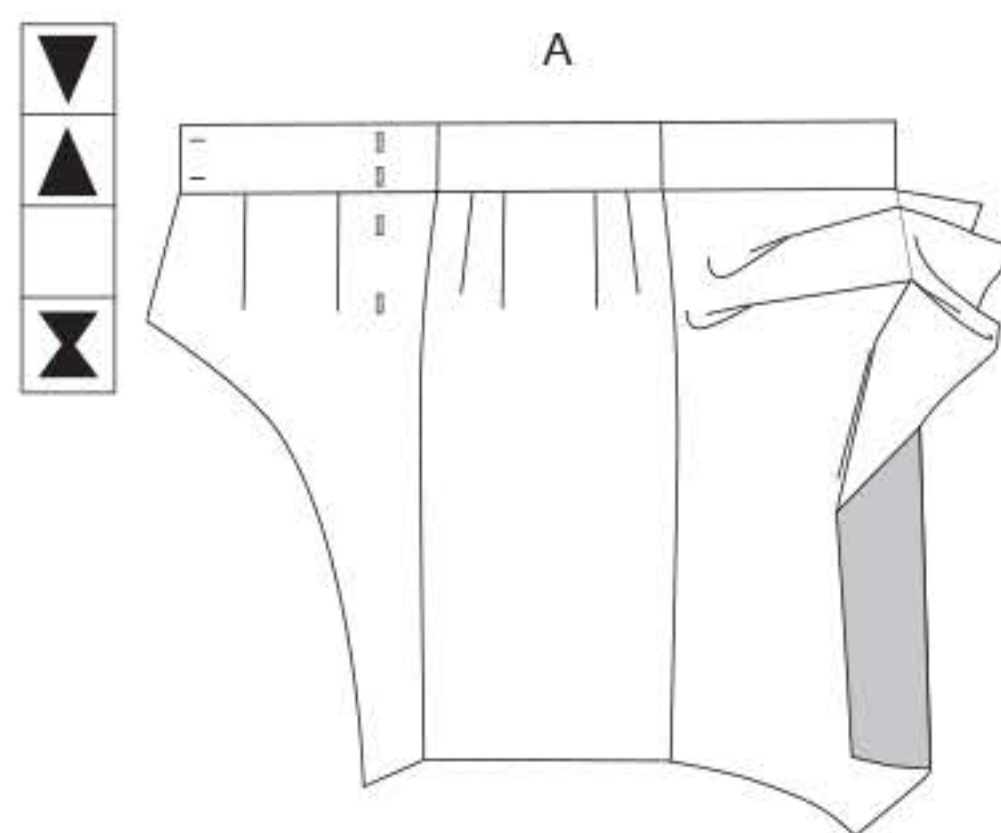
Tailles	6	8	10	12	14	16	18	20	22
A 115cm*/**	1.9	1.9	2.0	2.0	2.0	2.1	2.1	2.2	2.2
150cm*/**	1.3	1.3	1.4	1.4	1.4	1.5	1.5	1.8	1.8
Contraste A									
115, 150cm*/**	1.2	1.2	1.2	1.2	1.2	1.2	1.3	1.3	1.3
B 115cm*/**	2.4	2.4	2.4	2.7	2.7	2.7	2.7	2.7	2.7
150cm*/**	2.0	2.0	2.0	2.0	2.0	2.0	2.2	2.2	2.3
Doublure A,B									
115cm**	1.0	1.0	1.0	1.0	1.6	1.6	1.6	1.6	1.6
Entoilage Thermocollant B									
46, 51cm	0.6	0.6	0.6	0.6	0.6	0.7	0.7	0.7	0.7

MERCERIE: 2 boutons de 1.3cm, 4 crochets pour jupe.

MESURES DU VÊTEMENTS FINI

Longueur- dos, taille à l'ourlet

A,B	66	66	66	66	66	66	66	66	66
-----	----	----	----	----	----	----	----	----	----



A5
(6-8-10-12-14)

V 1684 / A5 1

