

# M8072 21 PIECES/PIEZAS

## UNISEX COSTUMES

**Suggested Fabrics:** Moderate Stretch Knits (35% Cross Grain), Two-way Stretch Knits (50% Cross Grain)- Spandex, Ponte de Roma. **Interfacing E,F:** Foam-Backed Headliner Fabric.

**NOTE:** A,B,C,D are close fitting through chest and hip.

**Notions:** **A:** One Separating Zipper: 16" (41cm) for sizes XS-S, 18" (46cm) for sizes M-XL, Six 1" (2.5cm) Buttons, 3 yds. (2.7m) of 3/4" (2cm) Elastic Trim (Color 1), 1 1/2 yds. (1.4m) of 3/4" (2cm) Elastic Trim (Color 2). **B:** One Separating Zipper: 16" (41cm) for sizes XS-S, 18" (46cm) for sizes M-XL. **C:** 2 1/2 yds. (2.3m) of 1" (2.5cm) Elastic, 1 1/2 yds. (1.4m) of 3/4" (2cm) Elastic Trim. **D:** 1 1/4 yds. (1.2m) of 1" (2.5cm) Elastic. **E:** 1/8 yd. (0.2m) of 1 1/2" (3.8cm) Hook and Loop Tape. **F:** 1 3/4 yds. (1.6m) of 1/4" (0.6cm) Double Fold Bias Tape, Polyfill, 4 3/4 yds. (4.4m) of Extra-Wide Bias Tape.

Sizes	XS (4-6)	S (8-10)	M (12-14)	L (16-18)	XL (20-22)	
Sizes- European	30-32	34-36	38-40	42-44	46-48	

A	XS	S	M	L	XL	
60"***	7/8	1	1	1 1/8	1 1/8	Yd

Fusible Interfacing A,B	XS	S	M	L	XL	
18, 20"	5/8	5/8	5/8	3/4	3/4	Yd

B	XS	S	M	L	XL	
60"***	1 1/8	1 1/4	1 3/8	1 1/2	1 1/2	Yd

C	XS	S	M	L	XL	
60"***	1 3/8	1 3/8	1 3/8	1 1/2	1 3/4	Yd

D	XS	S	M	L	XL	
60"***	1 3/8	1 3/8	1 1/2	1 3/4	1 3/4	Yd

**Fusible Intefacing D-** 18, 20"- 3/8 yd.

**Belt E-** 60"\*\*\*- 3/8 yd.

**Interfacing E-** 54"\*\*\*- 3/8 yd.

**F-** 60"\*\*\*- 3/4 yd.

**Interfacing F-** 54"\*\*\*- 3/4 yd.

### FINISHED GARMENT MEASUREMENTS

D Leg Width	XS	S	M	L	XL	In
	10 1/2	11 1/2	12 1/2	13 1/2	14 1/2	
Back length from base of neck:						
A	17 1/2	18	18 1/2	19	19 1/2	In
Side length from waist:						
C	29	29	29	29	29	In
D	39	39	39	39	39	"

### DÉGUISEMENTS UNISEXE/ DISFRACES UNISEX

Tailles/Tallas	TP/XP	P	M	G	TG/XG
Françaises	32-34	36-38	40-42	44-46	48-50
Europeas	30-32	34-36	38-40	42-44	46-48

A	XS	S	M	L	XL	m
150cm***	0.8	1.0	1.0	1.1	1.1	

Entoilage Thermocollant A,B/ Entretela Termoadhesiva A,B	XS	S	M	L	XL	m
46, 51cm	0.6	0.6	0.6	0.7	0.7	

B	XS	S	M	L	XL	m
150cm***	1.1	1.2	1.3	1.4	1.4	

C	XS	S	M	L	XL	m
150cm***	1.3	1.3	1.3	1.4	1.6	

D	XS	S	M	L	XL	m
150cm***	1.3	1.3	1.4	1.6	1.6	

**Entoilage Thermocollant D/ Entretela Termoadhesiva D-** 46, 51cm- 0.4m

**Ceinture E/ Cinturón E-** 150cm\*\*\*- 0.4m

**Entoilage E/ Entretela E-** 140cm\*\*\*- 0.4m

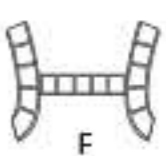
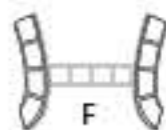
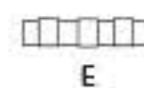
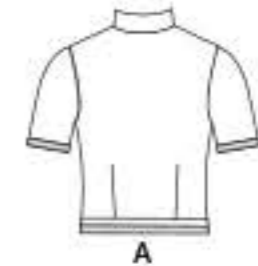
**F-** 150cm\*\*\*- 0.7m

**Entoilage F/ Entretela F-** 140cm\*\*\*- 0.7m

\*with nap \*\*without nap \*\*\*with or without nap

\*con pelusa \*\*sin pelusa \*\*\*con o sin pelusa

\*avec sens \*\*sans sens \*\*\*avec ou sans sens



4" of crosswise folded knit must **STRETCH** from here  
10 cm de tricot plié sur le travers doivent s'étirer d'ici  
10 cm de tejido de punto doblado al través deben estirarse desde acá

To Here (50%)  
jusqu'ici (50%)  
hasta acá (50%)