

V1713

ADVANCED/PLUS DIFFICILE

MISSES' JACKETS: Close fitting, mandarin collar, multi-seam jackets with pockets, fur hook closure. **A:** Button and braid trim, piping. **B:** Fur contrast. **FABRICS:** Wool Crepe, Wool Boucle, Stretch Wovens. **Contrast B:** Low Pile Faux Fur. **Lining A,B:** Satin, Crepe de Chine. Unsuitable for obvious diagonals.
*With Nap. **Without Nap.

Combinations: (A-B-C-D-E-F-G-H-I-J)
All Sizes in One Envelope.

Sizes	A	B	C	D	E	F	G	H	I	J
A 45 ^{**} / ^{**}	2 1/8	2 1/8	2 1/8	2 1/4	2 3/8	2 1/2	2 5/8	2 5/8	2 3/4	2 3/4
60 ^{**} / ^{**}	1 5/8	1 5/8	1 5/8	1 3/4	1 3/4	1 3/4	2	2	2	2
Contrast A										
45 ^{**} / ^{**}	1 3/4	1 3/4	1 3/4	1 3/4	1 3/4	1 3/4	1 7/8	1 7/8	1 7/8	2
60 ^{**} / ^{**}	1 1/4	1 1/4	1 1/4	1 3/8	1 3/8	1 3/8	1 3/8	1 3/8	1 1/2	1 1/2
Lining A										
45 ^{**} / ^{**}	1 5/8	1 5/8	1 5/8	1 5/8	1 3/4	2 1/8	2 1/8	2 1/4	2 3/8	2 5/8
60 ^{**} / ^{**}	1 1/4	1 1/2	1 1/2	1 1/2	1 1/2	1 1/2	1 5/8	1 3/4	1 3/4	1 3/4
B 45 ^{**} / ^{**}	3 1/8	3 1/8	3 1/4	3 1/4	3 1/4	3 5/8	3 5/8	3 3/4	4	4
60 ^{**} / ^{**}	2	2 1/8	2 1/4	2 1/4	2 1/2	2 1/2	2 5/8	2 5/8	2 3/4	2 3/4
Contrast B - 45, 60^{**} - 1/2 yd.										
Lining B										
45 ^{**} / ^{**}	1 5/8	1 5/8	1 5/8	2 1/8	2 1/8	2 1/8	2 1/8	2 5/8	2 5/8	2 5/8
60 ^{**} / ^{**}	1 1/4	1 3/8	1 1/2	1 1/2	1 1/2	1 5/8	1 5/8	1 3/4	1 3/4	1 7/8

Interfacing A,B	A	B	C	D	E	F	G	H	I	J
18, 20"	3 1/8	3 1/8	3 3/8	3 3/8	3 1/2	3 1/2	3 5/8	3 5/8	3 3/4	3 3/4

NOTIONS: **A:** Six Flat Fur Hooks, Thirty Six 3/4" - 7/8" (2.0 - 2.1cm) Shank Buttons, 7 yds. (6.4m) of 1/4" (6mm) Soutache, 4 1/4 yds. (3.9m) of Piping, Shoulder Pads, 1/4" (6mm) Stay Tape. **B:** Seven Flat Fur Hooks, 3 1/2 yds. (3.2m) of Fur Piping, Shoulder Pads, 1/4" (6mm) Stay Tape.

FINISHED GARMENT MEASUREMENTS

Back length from base of neck	A,B	C	D	E	F	G	H	I	J	
	28 1/4	29	29 3/4	30	30 1/2	31	31 1/4	31 1/2	31 3/4	32

VESTES (J. FEMME): Vestes moulantes à coutures multiples, col droit, poches, fermeture à agrafe recouverte. **A:** Bouton et galon souple, Passepoil. **B:** Fourrure Contrastante. **TISSUS:** Crêpe de Laine, Bouclé de Laine, Tissus Tissés Extensibles. **Contraste B:** Fausse Fourrure à poil bas. **Doublure A,B:** Satin, Crêpe de Chine. Grandes diagonales ne conviennent pas.
*Avec Sens. **Sans Sens.

Séries: (A-B-C-D-E-F-G-H-I-J)

Toutes les tailles sont dans la même pochette.

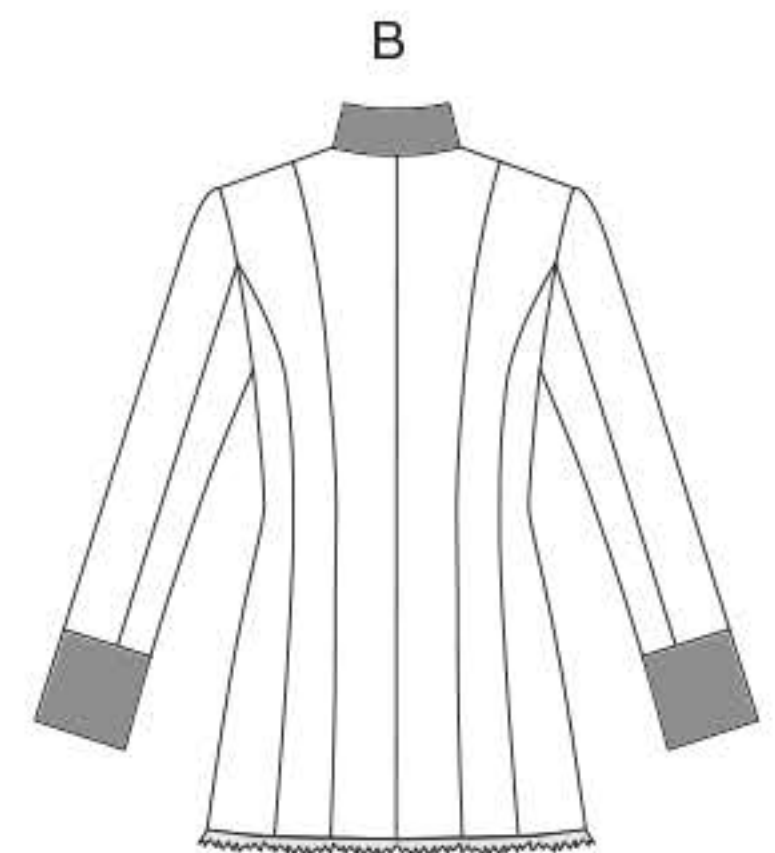
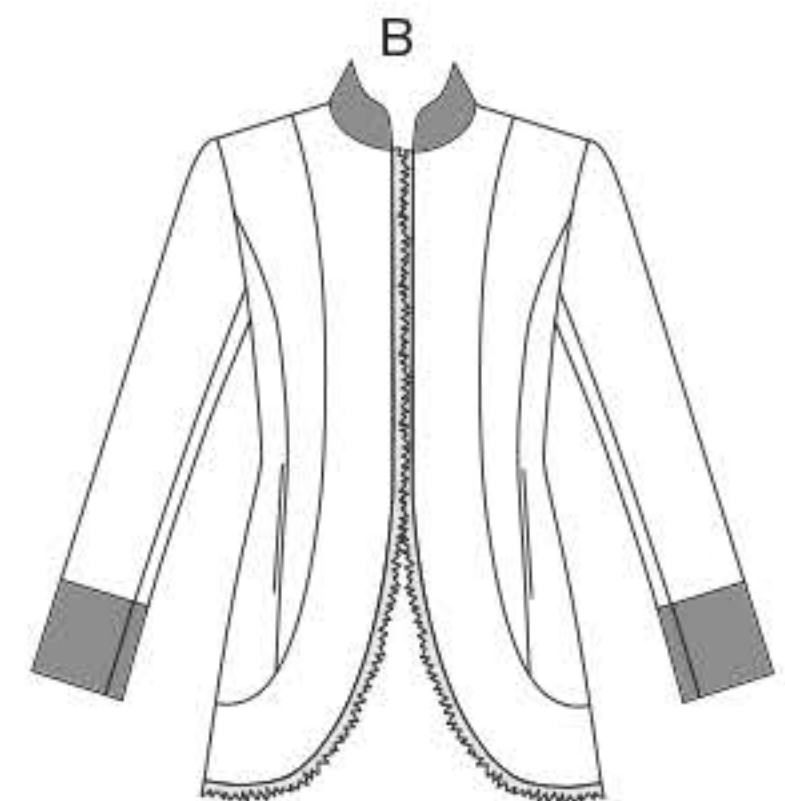
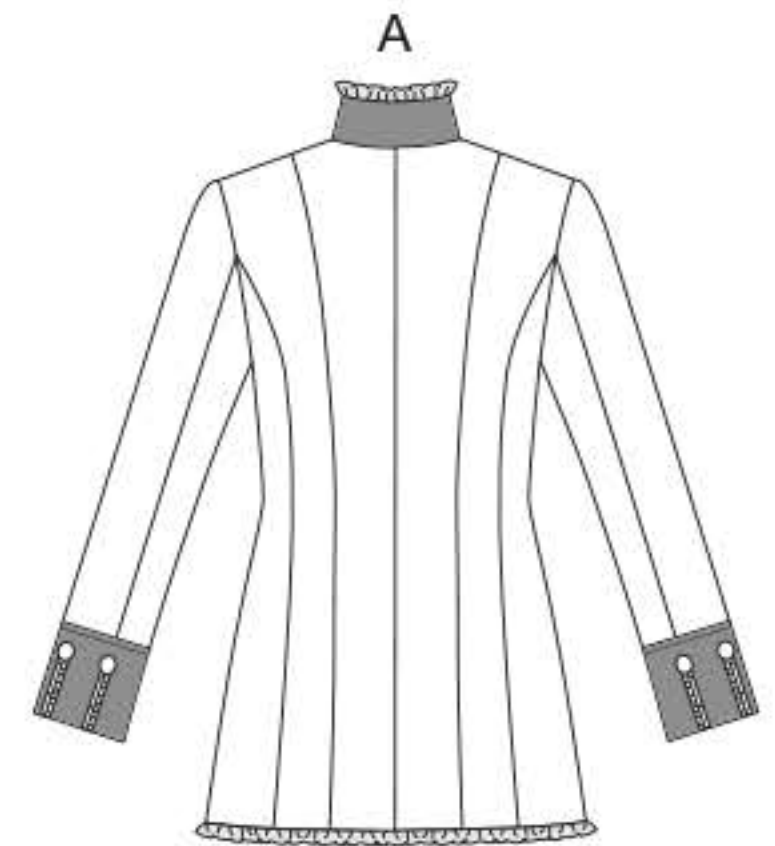
Tailles	A	B	C	D	E	F	G	H	I	J
A 115cm ^{**} / ^{**}	2.0	2.0	2.0	2.1	2.2	2.3	2.4	2.4	2.6	2.6
150cm ^{**} / ^{**}	1.5	1.5	1.5	1.6	1.6	1.6	1.9	1.9	1.9	1.9
Contraste A										
115cm ^{**} / ^{**}	1.6	1.6	1.6	1.6	1.6	1.6	1.8	1.8	1.8	1.9
150cm ^{**} / ^{**}	1.2	1.2	1.2	1.3	1.3	1.3	1.3	1.3	1.4	1.4
Doublure A										
115cm ^{**} / ^{**}	1.5	1.5	1.5	1.5	1.6	2.0	2.0	2.1	2.2	2.4
150cm ^{**} / ^{**}	1.2	1.4	1.4	1.4	1.4	1.4	1.5	1.6	1.6	1.6
B 115cm ^{**} / ^{**}	2.9	2.9	3.0	3.0	3.0	3.4	3.4	3.5	3.7	3.7
150cm ^{**} / ^{**}	2.0	2.0	2.1	2.1	2.3	2.3	2.4	2.4	2.6	2.6
Contraste B- 115, 150cm* - 0.5m.										
Doublure B										
115cm ^{**} / ^{**}	1.5	1.5	1.5	2.0	2.0	2.0	2.0	2.4	2.4	2.4
150cm ^{**} / ^{**}	1.2	1.3	1.4	1.4	1.4	1.5	1.5	1.6	1.6	1.8

Entoilage A,B	A	B	C	D	E	F	G	H	I	J
46, 51cm	2.9	2.9	3.1	3.1	3.2	3.2	3.4	3.4	3.5	3.5

MERCERIE: **A:** 6 Agrafes Plates Recouvertes, 36 Boutons à Tige de 2cm - 2.1cm, 6.4m de Galon Soutache de 6mm, 3.9m de Passepoil, Épaulettes, Ruban Soutien Stay Tape de 6mm. **B:** 7 Agrafes Plates Recouvertes, 3.2m de Passepoil Fourrure, Épaulettes, Ruban Soutien Stay Tape de 6mm.

MESURES DU VÊTEMENT FINI

Longueur- dos, votre nuque à l'ourlet	A,B	C	D	E	F	G	H	I	J	
	71.5	74	76	76	77	79	79.5	80	80.5	82



- Button and braid trim
- Fur collar and cuffs
- Fur hook closures
- Patterns and instructions written by Sandra Betzina
- Bouton et galon
- Col et poignets en fourrure
- Agrafes recouvertes
- Patrons et instructions de Sandra Betzina