

# M8092

8 PIECES/PIEZAS

Very Easy  
Très Facile  
Muy Fácil

## MISSES' DRESSES

**Suggested Fabrics:** Cotton Blends, Poplin, Dotted Swiss.

**Notions:** A,B: 1½ yds. (1.4m) of ¾" (1cm) Elastic. C: 2 yds. (1.9m) of ¾" (1cm) Elastic.

Sizes	S	M	L	XL
	(8-10)	(12-14)	(16-18)	(20-22)
<b>Sizes- European</b>	34-36	38-40	42-44	46-48

A	S	M	L	XL	
60"***	2¼	2¾	2¾	2¾	Yd

B	S	M	L	XL	
60"***	2¼	3⅛	3½	3½	Yd

C	S	M	L	XL	
60"***	4⅛	4⅛	4¾	4¾	Yd

**Belt D - 60"\*\*\* - 1 yd.**

**Fusible Interfacing D**

18, 20"	S	M	L	XL	
	⅝	¾	¾	⅞	Yd

### FINISHED GARMENT MEASUREMENTS

A,B,C Bust	48¾	52¼	56¼	60¼	In
A,B,C Hip	53½	57	61	65	"
A Width	55½	59	63	67	"
B Width	58½	62	66	70	"
C Width	62	65½	69½	73½	"
<b>Back length from base of neck:</b>					
A	35	35½	36	36½	In
B	39	39½	40	40½	"
C	48	48½	49	49½	"

### ROBES POUR JEUNE FEMME/VESTIDOS PARA SEÑORITAS

Tailles/Tallas	P	M	G	TG/XG
<b>Françaises</b>	36-38	40-42	44-46	48-50
<b>Europeas</b>	34-36	38-40	42-44	46-48

A	P	M	G	TG/XG	
150cm***	2.1	2.2	2.6	2.6	m

B	P	M	G	TG/XG	
150cm***	2.1	2.9	3.2	3.2	m

C	P	M	G	TG/XG	
150cm***	3.8	3.8	4.0	4.0	m

**Ceinture D/ Cinturón D - 150cm\*\*\* - 1.0m.**

**Entoilage Thermocollant D/ Entretela Termoadhesiva D**

46, 51cm	P	M	G	TG/XG	
	0.6	0.7	0.7	0.8	m

\*with nap \*\*without nap \*\*\*with or without nap  
\*con pelusa \*\*sin pelusa \*\*\*con o sin pelusa

\*avecsens \*\*sans sens \*\*\*avec ou sans sens



A



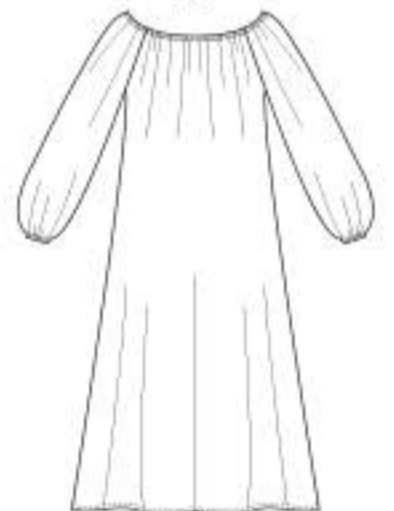
A



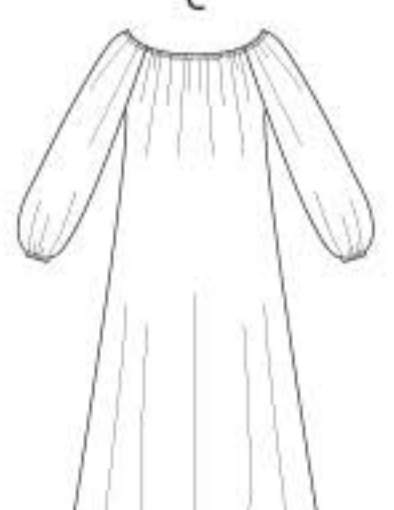
B



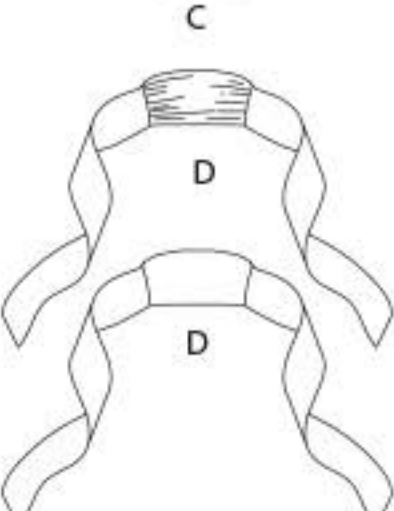
B



C



C



D

D