

M8112

6 PIECES/PIEZAS

MISSES' TOPS

Suggested Fabrics: Moderate Stretch Knits (35% Cross Grain)- Cotton Knits, Novelty Knits, Interlock, Jersey.

Sizes	S	M	L	XL	XXL
	(8-10)	(12-14)	(16-18)	(20-22)	(24-26)

A	S	M	L	XL	XXL	Yd
50*	1 1/8	1 1/8	1 1/4	1 1/4	1 1/4	

B	S	M	L	XL	XXL	Yd
50*- 1 3/8 yds.						

C	S	M	L	XL	XXL	Yd
50*	1 1/2	1 5/8	1 5/8	1 3/4	1 3/4	

FINISHED GARMENT MEASUREMENTS

A,B,C Bust	38 1/2	42	46	50	54	In
A Width	39	42 1/2	46 1/2	50 1/2	54 1/2	"
B,C Width	39 1/2	43	47	51	55	"
Back length from base of neck:						
A	19 1/2	20	20 1/2	21	21 1/2	In
B,C	22 1/2	23	23 1/2	24	24 1/2	"

HAUTS POUR JEUNE FEMME/ TOPS PARA SEÑORITAS

Tailles/ Tallas	P	M	G	TG/XG	TTG/XXG
Françaises	36-38	40-42	44-46	48-50	52-54
Europeas	34-36	38-40	42-44	46-48	50-52

A	P	M	G	TG/XG	TTG/XXG	m
150cm*	1.1	1.1	1.2	1.2	1.2	

B	P	M	G	TG/XG	TTG/XXG	m
150cm*- 1.3m.						

C	P	M	G	TG/XG	TTG/XXG	m
150cm*	1.4	1.5	1.5	1.6	1.6	

*with nap **without nap ***with or without nap
 *con pelusa **sin pelusa ***con o sin pelusa

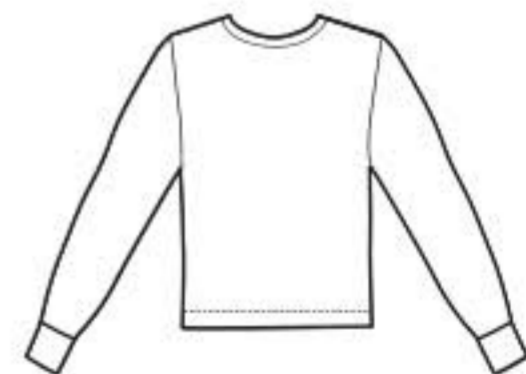
*avec sens **sans sens ***avec ou sans sens



A



B



C

4" of crosswise folded knit must **STRETCH** from here
 10 cm de tricot plié sur le travers doivent s'étirer d'ici
 10 cm de tejido de punto doblado al través deben estirarse desde acá



To Here (35%)
 jusqu'ici (35%)
 hasta acá (35%)

