

M8115

9 PIECES/PIEZAS

Easy
Facile
Fácil

MISSES' TOPS

Suggested Fabrics: Crepes, Crepe de Chine, Charmeuse, Stable Knits.

Notions: A,B,C: 1¼ yds. (1.2m) of ¼" (0.6cm) Wide Elastic.

Sizes	XS (4-6)	S (8-10)	M (12-14)	L (16-18)	XL (20-22)	
A						
60****	1¾	1¾	1¾	1¾	1¾	Yd
B						
60****	1⅝	1¾	1⅞	1⅞	1⅞	Yd
C						
60****	2	2⅞	2¼	2¼	2¼	Yd
Fusible Interfacing A,B,C						
18,20"	⅝	⅝	⅝	¾	¾	Yd

FINISHED GARMENT MEASUREMENTS

A, B, C Bust	37½	39½	43	47	51	In
A Width	39	41	44½	48½	52½	"
B Width	61½	63½	67	71	75	"
C Width	79	81	84½	88½	92½	"
Back length from base of neck:						
A	22½	23	23½	24	24½	In
B	23½	24	24½	25	25½	"
C	29½	30	30½	31	31½	"

HAUTS POUR JEUNE FEMME/ TOPS PARA SEÑORITAS

Tailles/ Tallas	TP/XP	P	M	G	TG/XG	
Françaises	32-34	36-38	40-42	44-46	48-50	
Europeas	30-32	34-36	38-40	42-44	46-48	
A						
150cm***	1.3	1.3	1.3	1.3	1.3	m
B						
150cm***	1.5	1.6	1.8	1.8	1.8	m
C						
150cm***	1.9	2.0	2.1	2.1	2.1	m
Entoilage Thermocollant A,B,C/ Entretela Termoadhesiva A,B,C						
46,51cm	0.6	0.6	0.6	0.7	0.7	m

*with nap **without nap ***with or without nap
*con pelusa **sin pelusa ***con o sin pelusa

*avecsens **sans sens ***avec ou sans sens



A



A



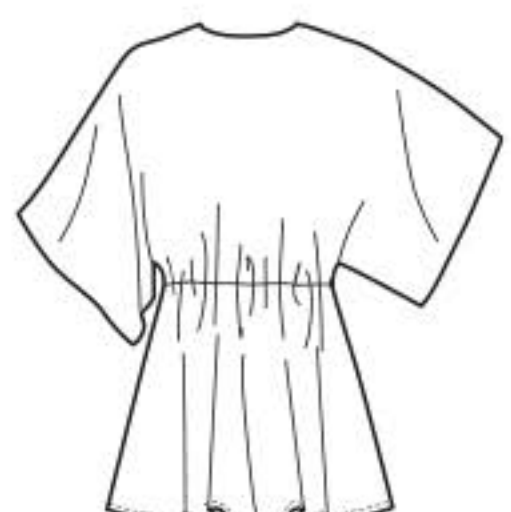
B



B



C



C