

M8071

10 PIECES/PIEZAS

MISSES' COSTUME

Suggested Fabrics: Wool/Wool Blends, Gabardine, Suiting Fabrics.

Contrast A: Chiffon, Lawn, Voile, Linen. **Interfacing:** Sew-In.

Notions: A,B,C: One Pkg. of 1" (2.5cm) Extra Wide Bias Tape, Five Snaps and One Hook & Bar. **A:** Twelve 1 1/8" (2.8cm) Buttons. **B:** Twelve 1" (2.5cm) Buttons. **C:** Three 3/4" (2cm) Buttons.

Sizes	4	6	8	10	12	14	16	18	20	
-------	---	---	---	----	----	----	----	----	----	--

A											
45"***	2 3/4	2 3/4	3	3	3	3	3	3	3	3	Yd
60"***	2 1/8	2 1/8	2 1/8	2 1/8	2 1/8	2 1/8	2 1/8	2 1/8	2 1/8	2 1/8	"

Contrast A (Ruffle)- 45, 60"***- 3/8 yd.

Sew-In Interfacing A- 18, 20"- 3/4 yd.

B											
45"***	3	3	3	3	3	3	3	3	3	3	Yd
60"***	2 1/8	2 1/8	2 1/8	2 1/8	2 1/8	2 1/8	2 1/8	2 1/8	2 1/8	2 1/8	"

Sew-In Interfacing B- 18, 20"- 7/8 yd.

C											
45"***	3	3	3	3	3	3	3	3	3	3	Yd
60"***	2 1/8	2 1/8	2 1/8	2 1/8	2 1/8	2 1/8	2 1/4	2 3/8	2 3/8	2 3/8	"

Sew-In Interfacing C- 18, 20"- 1 yd.

FINISHED GARMENT MEASUREMENTS

A,B,C Width	76 1/2	77 1/2	78 1/2	79 1/2	81	83	85	87	89	In
-------------	--------	--------	--------	--------	----	----	----	----	----	----

Back length from waist:

A,B,C	32	32	32	32	32	32	32	32	32	In
-------	----	----	----	----	----	----	----	----	----	----

DÉGUISEMENT POUR JEUNES FEMMES/ DISFRAZ PARA JÓVENES Y SEÑORAS

Tailles/Tallas	4	6	8	10	12	14	16	18	20
Françaises	32	34	36	38	40	42	44	46	48
Europeas	30	32	34	36	38	40	42	44	46

A											
115cm***	2.6	2.6	2.8	2.8	2.8	2.8	2.8	2.8	2.8	2.8	m
150cm***	2.0	2.0	2.0	2.0	2.0	2.0	2.0	2.0	2.0	2.0	"

Contraste A (Volant)/ Contraste A (Volante)- 115, 150cm***- 0.4m.

Entoilage à Coudre A/ Entretela para Coser A- 46, 51cm- 0.7m.

B											
115cm***	2.8	2.8	2.8	2.8	2.8	2.8	2.8	2.8	2.8	2.8	m
150cm***	2.0	2.0	2.0	2.0	2.0	2.0	2.0	2.0	2.0	2.0	"

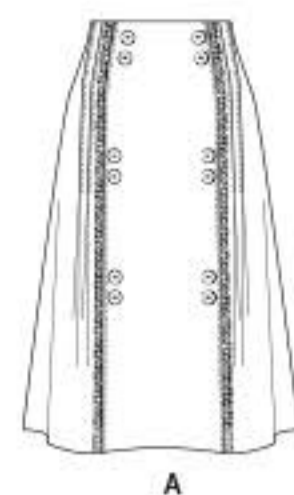
Entoilage à Coudre B/ Entretela para Coser B- 18, 20cm- 0.8m.

C											
115cm***	2.8	2.8	2.8	2.8	2.8	2.8	2.8	2.8	2.8	2.8	m
150cm***	2.0	2.0	2.0	2.0	2.0	2.0	2.1	2.2	2.2	2.2	"

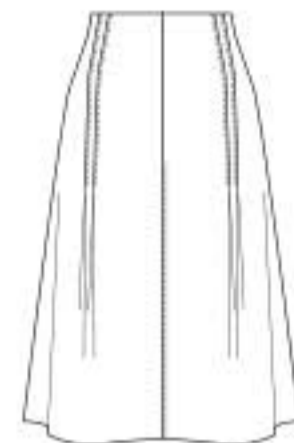
Entoilage à Coudre C/ Entretela para Coser C- 46, 51cm- 1.0m.

*with nap **without nap ***with or without nap
*con pelusa **sin pelusa ***con o sin pelusa

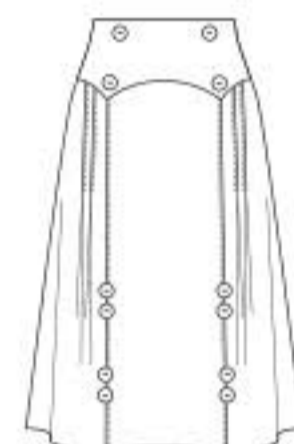
*avec sens **sans sens ***avec ou sans sens



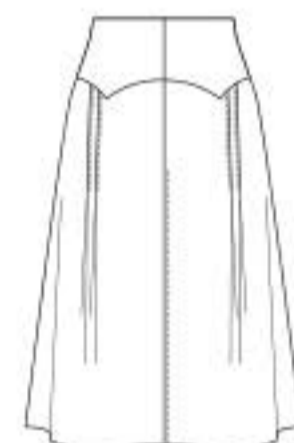
A



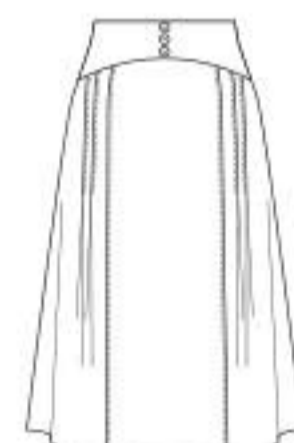
A



B



B



C



C