

# S9183 13 PIECES/PIEZAS

## MISSSES' TUNIC, DRESS AND LEGGING

**Fabrics:** **A:** Sized for Stretch Knits only with at least 25% stretch such as Double Knit, Ponte, Stretch Pleather. **B,C:** Cotton Types, Double Knits, Lightweight Denim, Linen Types, Ponte, Stretch Wovens, Sweatshirt Fleece, Terry Cloth, Wool Types. Suitable for Overlock/Serger. Extra fabric needed to match plaids, stripes or one-way design fabrics.

**Notions:** Thread. **A:** One 7" (18cm) zipper. **C:** One 3/8" (1cm) button, 2" (5cm) length elastic cord.

Sizes	XXS	XS	S	M	L	XL	XXL
	4	6-8	10-12	14-16	18-20	22-24	26
Sizes-European	30	32-34	36-38	40-42	44-46	48-50	52

### A Legging

45***	1½	1⅝	2	2¾	2½	2¾	2¾	Yd
60***	1¼	1¼	1⅝	1⅝	1⅝	2⅛	2⅛	"

**Interfacing-** ¾ yd. of 20" to 25" lightweight fusible

### B Dress

45***	2¾	2¾	2⅞	2⅞	2⅞	3	3⅛	Yd
60***	1¾	1¾	2¾	2¾	2⅞	2⅞	2⅞	"

**B,C Interfacing-** ⅝ yd. of 20" to 25" lightweight fusible

### C Tunic

45***	2¼	2¼	2⅜	2⅜	2⅜	2½	2¾	Yd
60***	1½	1½	1⅞	2	2	2⅜	2⅜	"

### FINISHED GARMENT MEASUREMENTS

<b>A Hip</b>	29½	32	34½	38½	42½	46½	50½	In
<b>B,C Bust</b>	34	36½	39	43	47	51	55	"

### A Legging Side Length

	36	36½	37	37½	38	38½	39	In
<b>A Legging Leg Width</b>	11	11½	12	12½	13	13½	14	"

### Finished back length from base of neck:

<b>B Dress</b>	35	35½	36	36½	37	37½	38	In
<b>C Tunic</b>	41	41½	42	42½	43	43½	44	"

<b>B Dress Width</b>	42½	44½	47	51	55	59	63	"
<b>C Tunic Width</b>	38½	40½	43	47	51	55	59	"

## JEUNE FEMME: TUNIQUE, ROBE ET LEGGING/ SEÑORITAS: TÚNICA, VESTIDO Y LEGGING

Tailles/Tallas	TTP/XXP	TP/XP	P	M	G	TG/XG	TTG/XXG
	4	6-8	10-12	14-16	18-20	22-24	26
Tailles-Françaises	32	34-36	38-40	42-44	46-48	50-52	54
Tallas-Europeas	30	32-34	36-38	40-42	44-46	48-50	52

### A Legging

115cm**	1.40	1.40	1.90	2.10	2.30	2.50	2.50	m
150cm**	1.10	1.10	1.40	1.50	1.50	1.90	2.00	"

**Entoilage-** 0.70m de 51cm à 64cm, léger, thermocollant

**Entretela-** 0.70m de 51cm a 64cm, ligera, termoadhesiva

### B Robe/ B Vestido

115cm**	2.50	2.50	2.60	2.60	2.60	2.70	2.80	m
150cm**	1.60	1.60	2.50	2.50	2.60	2.60	2.70	"

**B,C Entoilage-** 0.30m de 51cm à 64cm, léger, thermocollant

**B,C Entretela-** 0.30m de 51cm a 64cm, ligera, termoadhesiva

### C Tunique/ C Túnica

115cm**	2.10	2.10	2.10	2.20	2.20	2.20	2.50	m
150cm**	1.30	1.40	1.70	1.80	1.90	2.20	2.20	"

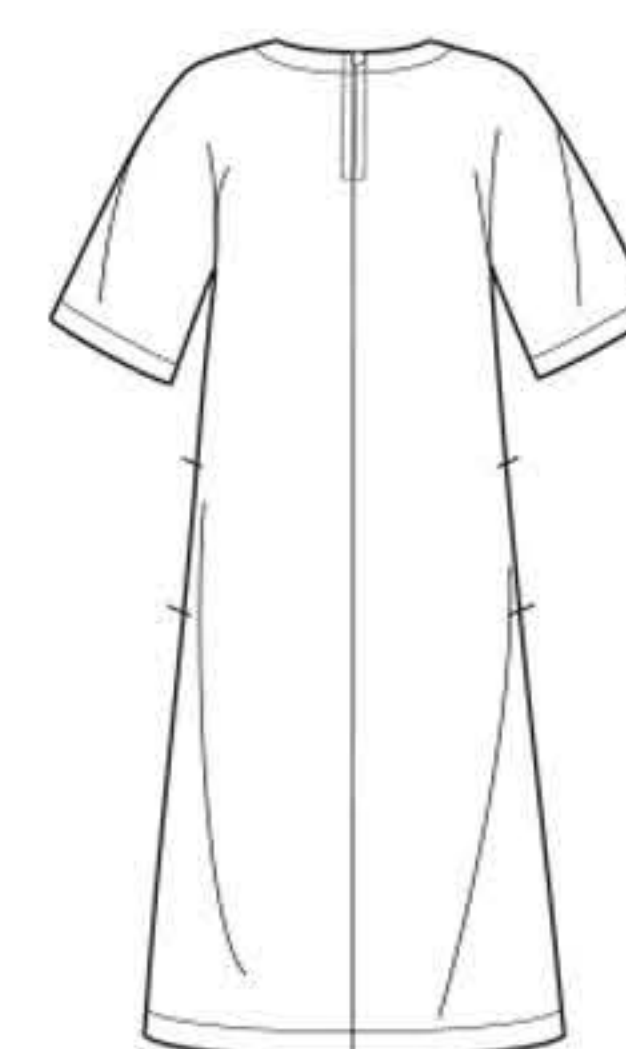
\*without nap \*\*with nap \*\*\*with or without nap

\*sans sens \*\*avec sens \*\*\*avec ou sans sens

\*sin pelusa \*\*con pelusa \*\*\*sin o con pelusa



A



B



C

**Instrucciones de costura en Español en el Interior del Patrón.**