

S9209

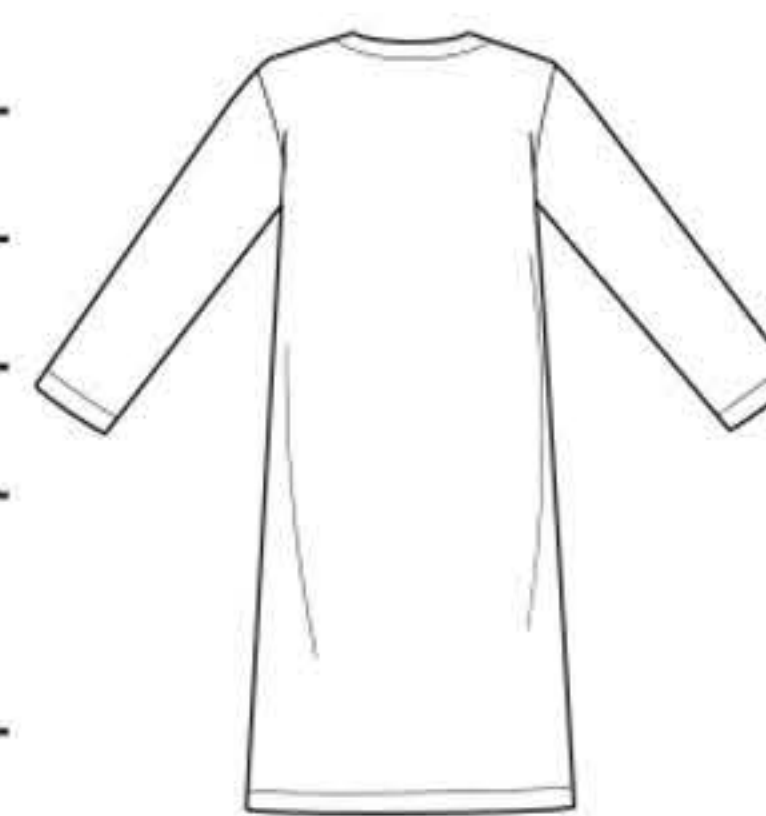
7 PIECES/PIEZAS

BOYS' AND GIRLS' LOUNGEWEAR

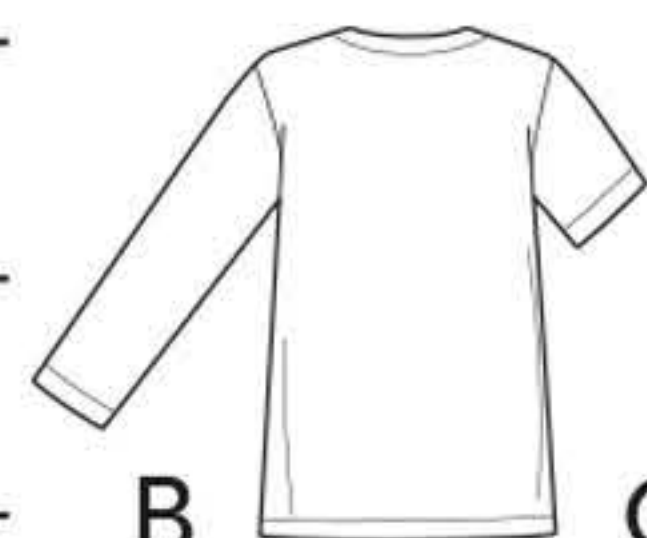
Fabrics: Broadcloth, Cotton Blends, Flannel, Gingham, Poplin, Seersucker. Extra fabric needed to match plaids, stripes or one-way design fabrics.

Notions: Thread. **D,E,F:** 7/8 yd. (0.8m) of 3/4" (2.0cm) wide elastic.

Sizes		8	10	12	14	16	
A,B,C Interfacing- 1/2 yd. of 20" to 25" lightweight fusible							
A Shirt	45 ^{***}	2 1/4	2 3/8	2 1/2	2 1/2	2 5/8	Yd
	60 ^{***}	1 3/4	1 7/8	1 7/8	2	2	"
B Top	45 ^{***}	1 1/2	1 5/8	1 3/4	1 3/4	1 3/4	Yd
	60 ^{***}	1 3/8	1 1/2	1 1/2	1 5/8	1 5/8	"
C Top	45 ^{***}	1 1/2	1 5/8	1 5/8	1 3/4	1 3/4	Yd
	60 ^{***}	1 1/4	1 1/4	1 3/8	1 3/8	1 3/8	"
D Shorts	45 ^{***}	7/8	1 1/8	1 1/4	1 1/4	1 1/4	Yd
	60 ^{***}	5/8	5/8	5/8	7/8	7/8	"
E Pants	45 ^{***}	1 1/4	1 1/2	1 7/8	2	2	Yd
	60 ^{***}	7/8	7/8	1	1 1/4	1 5/8	"
F Pants	45 ^{***}	1 7/8	2	2 1/4	2 5/8	2 5/8	Yd
	60 ^{***}	1 1/8	1 1/4	1 3/8	1 1/2	2	"

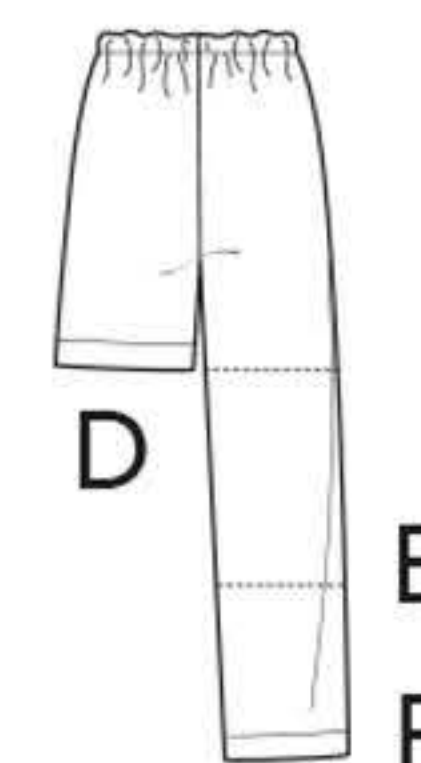


A



B

C



D

E

F

FINISHED GARMENT MEASUREMENTS

A,B,C Chest	34	35 1/2	37	39	41	In
D,E,F Hip	32 1/2	33 1/2	35	37	39	"
Finished back length from base of neck:						
A Top Length	34 1/2	36 1/2	38 1/2	40 1/2	42 1/2	In
B,C Top Length	20	22	24	26	28	"
D Shorts Side Length	13 1/4	14	14 3/4	15 1/2	16 1/4	"
E Pants Side Length	20 3/4	24	27 1/4	28 1/4	29 1/2	"
F Pants Side Length	32 1/4	35 1/2	38 3/4	40	41 1/4	"
A Top Width	36	38 1/2	41	44	47	"
B,C Top Width	34 1/2	36 1/2	38 1/2	40 1/2	43	"
D Shorts Leg Width	20 1/2	21 1/2	22 1/2	23 1/2	24 1/2	"
E Pants Leg Width	17 1/2	18 1/2	19 1/2	20 1/2	21 1/2	"
F Pants Leg Width	15 1/2	16 1/2	17 1/2	18 1/2	19 1/2	"

GARÇONNETS ET FILLETTES: VÊTEMENTS DE DÉTENTE

NIÑOS Y NIÑAS: ROPA DE ESTAR EN CASA

Tailles		8	10	12	14	16	
A,B,C Entoilage- 0.50m de 51cm à 64cm, léger, thermocollant							
A,B,C Entretela- 0.50m de 51cm a 64cm, ligera, termoadhesiva							
A Chemise de Nuit/ A Bata de Noche							
	115cm ^{**}	2.00	2.10	2.20	2.30	2.40	m
	150cm ^{**}	1.60	1.70	1.70	1.80	1.90	"
B Haut/ B Top	115cm ^{**}	1.40	1.50	1.60	1.60	1.60	m
	150cm ^{**}	1.20	1.30	1.40	1.40	1.50	"
C Haut/ C Top	115cm ^{**}	1.40	1.50	1.50	1.60	1.60	m
	150cm ^{**}	1.10	1.20	1.20	1.20	1.30	"
D Short	115cm ^{**}	0.80	1.00	1.10	1.10	1.20	m
	150cm ^{**}	0.60	0.60	0.60	0.80	0.80	"
E Pantalon/ E Pantalón	115cm ^{**}	1.10	1.30	1.70	1.80	1.80	m
	150cm ^{**}	0.80	0.80	0.90	1.10	1.50	"
F Pantalon/ F Pantalón	115cm ^{**}	1.70	1.90	2.10	2.40	2.40	m
	150cm ^{**}	1.10	1.10	1.20	1.40	1.90	"

*without nap **with nap ***with or without nap

*sans sens **avec sens ***avec ou sans sens

*sin pelusa **con pelusa ***sin o con pelusa

Instrucciones de costura en Español en el Interior del Patrón.