

M8078

16 PIECES/PIEZAS

MISSES' HISTORICAL BLOUSES

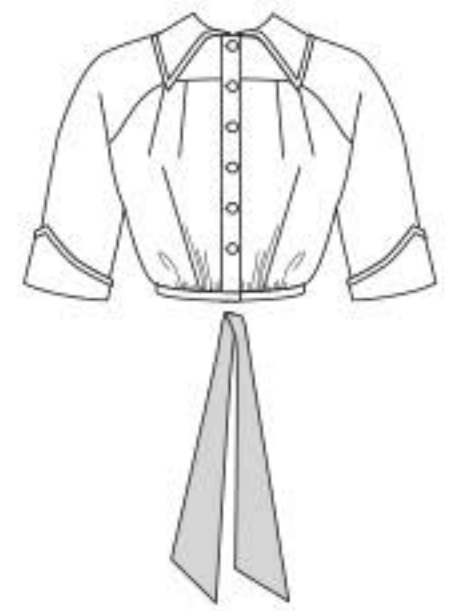
Suggested Fabrics: A,B,C: Lawn, Voile, Linen. **Tie A,B:** Cotton/Cotton Blends.

Notions: A: Six $\frac{3}{8}$ " (1cm) Buttons, One Pkg. of $\frac{1}{2}$ " (1.3cm) Single Fold Bias Tape, One Hook and Bar. B,C: Ten $\frac{3}{8}$ " (1cm) Buttons, One Hook and Bar.

Sizes	4	6	8	10	12	14	16	18	20	
A										
45****	2 $\frac{1}{4}$	2 $\frac{1}{4}$	2 $\frac{3}{8}$	2 $\frac{3}{8}$	2 $\frac{3}{8}$	2 $\frac{3}{8}$	2 $\frac{1}{2}$	2 $\frac{1}{2}$	2 $\frac{1}{2}$	Yd
60****	1 $\frac{1}{2}$	1 $\frac{1}{2}$	1 $\frac{5}{8}$	1 $\frac{5}{8}$	1 $\frac{7}{8}$	1 $\frac{7}{8}$	1 $\frac{7}{8}$	1 $\frac{7}{8}$	1 $\frac{7}{8}$	"
Sew-In Interfacing A										
18,20"	1	1	1	1	1 $\frac{1}{8}$	1 $\frac{1}{8}$	1 $\frac{1}{8}$	1 $\frac{1}{4}$	1 $\frac{1}{4}$	Yd
B										
45****	2 $\frac{1}{4}$	2 $\frac{3}{8}$	2 $\frac{3}{8}$	2 $\frac{1}{2}$	2 $\frac{1}{2}$	2 $\frac{5}{8}$	2 $\frac{3}{4}$	2 $\frac{3}{4}$	2 $\frac{3}{4}$	Yd
60****	1 $\frac{3}{4}$	1 $\frac{3}{4}$	1 $\frac{3}{4}$	1 $\frac{3}{4}$	1 $\frac{7}{8}$	1 $\frac{7}{8}$	2	2	2	"
Sew-In Interfacing B										
18,20"	1	1	1	1	1 $\frac{1}{8}$	1 $\frac{1}{8}$	1 $\frac{1}{8}$	1 $\frac{1}{4}$	1 $\frac{1}{4}$	Yd
Tie A,B										
45,60"	$\frac{5}{8}$	$\frac{5}{8}$	$\frac{5}{8}$	$\frac{5}{8}$	$\frac{3}{4}$	$\frac{3}{4}$	$\frac{3}{4}$	$\frac{3}{4}$	$\frac{3}{4}$	Yd
C										
45****	2	2 $\frac{1}{8}$	2 $\frac{1}{8}$	2 $\frac{1}{8}$	2 $\frac{1}{8}$	2 $\frac{1}{4}$	2 $\frac{1}{4}$	2 $\frac{3}{8}$	2 $\frac{3}{8}$	Yd
60****	1 $\frac{5}{8}$	1 $\frac{5}{8}$	1 $\frac{5}{8}$	1 $\frac{5}{8}$	1 $\frac{5}{8}$	1 $\frac{3}{4}$	1 $\frac{3}{4}$	1 $\frac{3}{4}$	1 $\frac{3}{4}$	"
Contrast C										
45,60"	1 $\frac{3}{8}$	1 $\frac{3}{8}$	1 $\frac{3}{8}$	1 $\frac{3}{8}$	1 $\frac{1}{2}$	1 $\frac{1}{2}$	1 $\frac{1}{2}$	1 $\frac{1}{2}$	1 $\frac{1}{2}$	Yd
Sew-In Interfacing C										
18,20"	1	1	1	1	1 $\frac{1}{8}$	1 $\frac{1}{8}$	1 $\frac{1}{8}$	1 $\frac{1}{4}$	1 $\frac{1}{4}$	Yd

HAUTS HISTORIQUES POUR JEUNE FEMME/BLUSAS HISTÓRICAS PARA SEÑORITAS

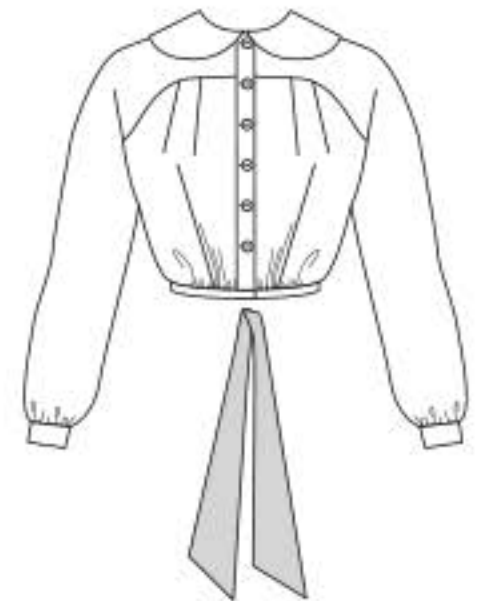
Tailles/ Tallas	4	6	8	10	12	14	16	18	20	
Françaises	32	34	36	38	40	42	44	46	48	
Europeas	30	32	34	36	38	40	42	44	46	
A										
115cm***	2.1	2.1	2.2	2.2	2.2	2.2	2.3	2.3	2.3	m
150cm***	1.4	1.4	1.5	1.5	1.8	1.8	1.8	1.8	1.8	"
Entoilage À Coudre A/ Entretela Para Coser A										
46,51cm	1.0	1.0	1.0	1.0	1.1	1.1	1.1	1.2	1.2	m
B										
115cm***	2.1	2.2	2.2	2.3	2.3	2.4	2.6	2.6	2.6	m
150cm***	1.6	1.6	1.6	1.6	1.8	1.8	1.9	1.9	1.9	"
Entoilage à Coudre B/ Entretela Para Coser B										
46,51cm	1.0	1.0	1.0	1.0	1.1	1.1	1.1	1.2	1.2	m
Attache A,B/ Lazo A,B										
115, 150cm	0.6	0.6	0.6	0.6	0.7	0.7	0.7	0.7	0.7	m
C										
115cm***	1.9	2.0	2.0	2.0	2.0	2.1	2.1	2.2	2.2	m
150cm***	1.5	1.5	1.5	1.5	1.5	1.6	1.6	1.6	1.6	"
Contraste C										
115, 150cm***	1.3	1.3	1.3	1.3	1.4	1.4	1.4	1.4	1.4	m
Entoilage à Coudre C/ Entretela para Coser C										
46,51cm	1.0	1.0	1.0	1.0	1.1	1.1	1.1	1.2	1.2	m



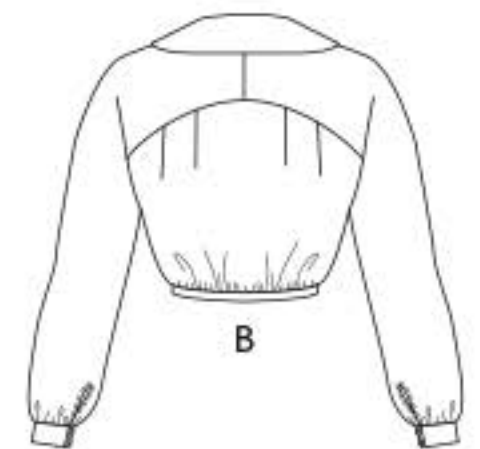
A



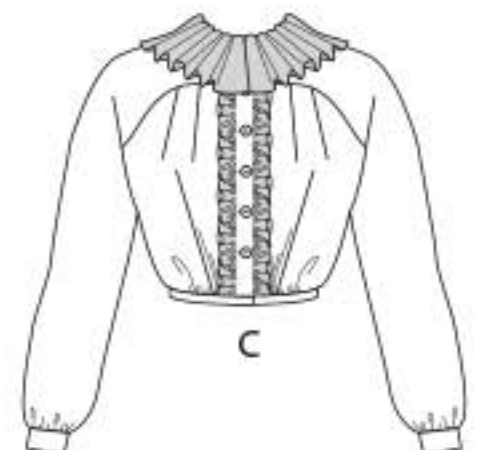
A



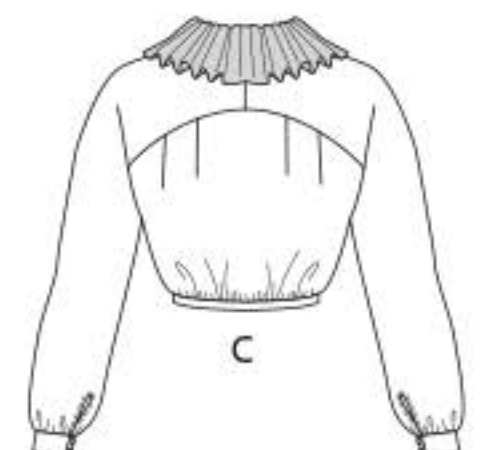
B



B



C



C