

S9165 16 PIECES

MISSES' COSTUME DRESSES

Fabrics: Satin, Taffeta, Jacquards, Cotton Blends, Velvet. **C Contrast Sleeves** also in Novelty Mesh, Lace. **C Contrast Belt** also in Upholstery-weight Faux Leather, Vinyl. **C Belt Interfacing:** Felt. **Lining:** Cotton, Cotton Blends, Lining fabric. Extra fabric needed to match plaids, stripes or one-way design fabrics.

Notions: Thread, one 22" invisible zipper. **B:** ¼ yd. of ½" wide hook and loop tape. **C:** 2 ⅛ yds. of ¾" wide studded trim, ⅜ yd. of ½" wide hook and loop tape, two O-rings.

Sizes	6	8	10	12	14	16	18	20	22	24
European	32	34	36	38	40	42	44	46	48	50

A Costume Dress

45"***	2¼	2¼	2¼	2¼	2½	2½	2½	2½	2⅝	2⅝	Yd
60"***	1⅞	1⅞	1⅞	1⅞	2⅞	2⅞	2⅞	2⅞	2⅞	2⅞	"

Contrast Sleeves and Peplum Lining

45"***	1¼	1¼	1¼	1⅜	1⅜	1⅜	1⅜	1⅜	1½	1½	Yd
60"***	1	1	1	1	1	1	1⅞	1⅞	1⅞	1¼	"

Bodice Lining

45"*	⅝	¾	⅞	⅞	⅞	1	1	1	1	1	Yd
------	---	---	---	---	---	---	---	---	---	---	----

B Costume Dress

45"***	2½	2½	2½	2½	2⅞	2⅞	3	3	3	3	Yd
60"***	2⅞	2⅞	2⅞	2⅞	2¼	2¼	2⅜	2⅜	2⅜	2½	"

Contrast Peplum Bands

45"***	⅞	⅞	⅞	⅞	⅞	⅞	⅞	⅞	⅞	⅞	Yd
60"***	¾	¾	¾	¾	¾	¾	¾	¾	¾	¾	"

Contrast Belt- ¼ yd. of 45" or 60"***

Bodice and Peplum Lining

45"*	1½	1⅝	1⅝	1⅝	1⅝	1⅝	1¾	1¾	1¾	1¾	Yd
------	----	----	----	----	----	----	----	----	----	----	----

Interfacing- 1⅞ yds. of 20" to 25" lightweight fusible

C Costume Dress

45"***	2⅜	2⅜	2⅜	2⅜	2⅜	2⅜	2⅜	2⅜	2⅜	2½	Yd
60"***	1⅝	1⅝	1¾	1¾	1¾	1¾	1¾	1¾	1⅞	1⅞	"

Contrast Sleeves- ¾ yd. of 45" or 60"***

Contrast Belt- ¼ yd. of 45" or 60"***; **Interfacing-** ¼ yd. of 72" felt

Bodice and Peplum Lining

45"*	1¼	1¼	1¼	1⅜	1⅜	1⅜	1½	1½	1½	1⅝	Yd
------	----	----	----	----	----	----	----	----	----	----	----

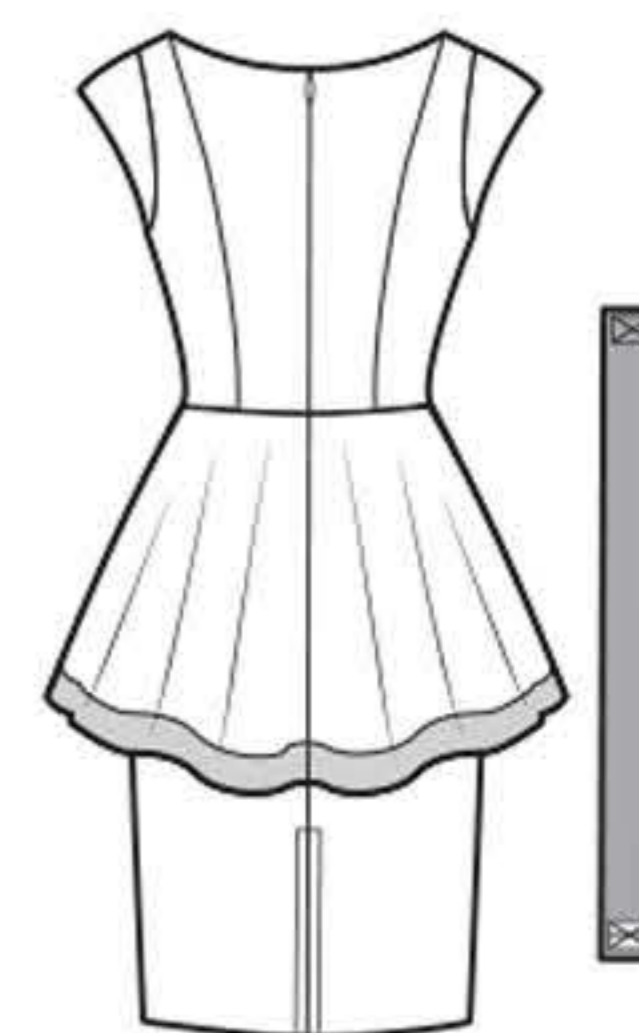
FINISHED GARMENT MEASUREMENTS

A,B,C Bust	34	35	36	37½	39½	41½	43½	45½	47½	49½	In
A,B,C Hip	35½	36½	37½	39	41	43	45	47	49	51	"
Finished back length from base of neck:											
A,B,C Dress	39½	39¾	40	40¼	40½	40¾	41	41¼	41½	41¾	In
A,B,C Dress Width	34	35	36	37½	39½	41½	43½	45½	47½	49½	In

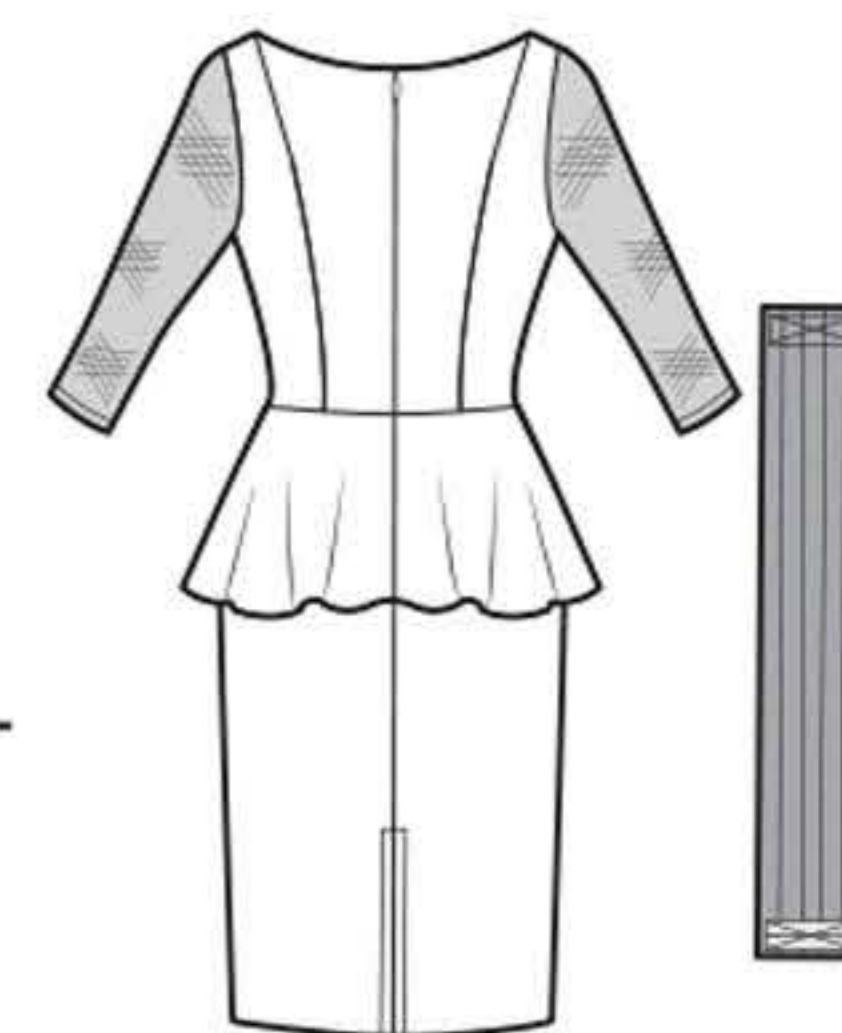
*without nap **with nap ***with or without nap



A



B



C