

M8083

14 PIECES/PIEZAS

Easy
Facile
Fácil

MISSES' DRESSES AND BELT with A/B, C, D cup sizes

Suggested Fabrics: Crepes, Challis, Crepe de Chine, Charmeuse.

Notions: A,B,C: Ten 1/2" (1.3cm) Buttons. **B:** 1 1/4 yds. (1.2m) of 1" (2.5cm) Elastic.

C: Two 1 1/4" (3.2cm) D-Rings.

Sizes	6	8	10	12	14	16	18	20	22	
A										
45"***	2 3/4	2 3/4	2 7/8	2 7/8	3 1/2	3 1/2	3 1/2	3 5/8	3 5/8	Yd
60"***	2 1/4	2 1/4	2 1/4	2 3/8	2 3/8	2 3/8	2 1/2	2 1/2	2 1/2	"

B										
45"***	3 1/2	3 1/2	3 1/2	4	4	4 1/8	4 1/8	4 1/4	4 1/4	Yd
60"***	2 7/8	2 7/8	2 7/8	2 7/8	2 7/8	2 7/8	2 7/8	3	3	"

Fusible Interfacing A,B- 18, 20"- 1 1/8 yds.

C										
45"***	4	4	4 1/8	4 1/8	4 5/8	4 5/8	4 3/4	4 3/4	4 3/4	Yd
60"***	3	3	3 1/8	3 1/8	3 1/2	3 1/2	3 1/2	3 5/8	3 5/8	"

Fusible Interfacing C- 18, 20"- 1 1/2 yds.

FINISHED GARMENT MEASUREMENTS

A,B Width	58 1/2	59 1/2	60 1/2	62	64	66	68	70	72	In
C Width	59 1/2	60 1/2	61 1/2	63	65	67	69	71	73	"
Back length from base of neck:										
A,B	34 1/2	34 3/4	35	35 1/4	35 1/2	35 3/4	36	36 1/4	36 1/2	In
C	46 1/2	46 3/4	47	47 1/4	47 1/2	47 3/4	48	48 1/4	48 1/2	"

ROBES ET CEINTURE POUR JEUNE FEMME/ VESTIDOS Y CINTURÓN PARA SEÑORITAS

Tailles/Tallas	6	8	10	12	14	16	18	20	22
Françaises	34	36	38	40	42	44	46	48	50
Europeas	32	34	36	38	40	42	44	46	48

A										
115cm***	2.6	2.6	2.7	2.7	3.2	3.2	3.2	3.4	3.4	m
150cm***	2.1	2.1	2.1	2.2	2.2	2.2	2.3	2.3	2.3	"

B										
115cm***	3.2	3.2	3.2	3.7	3.7	3.8	3.8	3.9	3.9	m
150cm***	2.7	2.7	2.7	2.7	2.7	2.7	2.7	2.8	2.8	"

Entoilage Thermocollant A,B/ Entretela Termoadhesiva A,B- 46, 51cm- 1.1m.

C										
115cm***	3.7	3.7	3.8	3.8	4.3	4.3	4.4	4.4	4.4	m
150cm***	2.8	2.8	2.9	2.9	3.2	3.2	3.2	3.4	3.4	"

Entoilage Thermocollant C/ Entretela Termoadhesiva C- 46, 51cm- 1.4 m.

*with nap **without nap ***with or without nap
*con pelusa **sin pelusa ***con o sin pelusa

*avec sens **sans sens ***avec ou sans sens



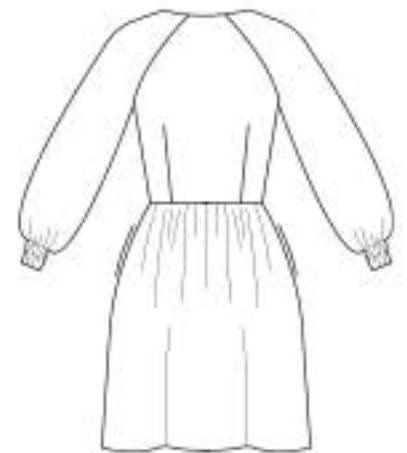
A



A



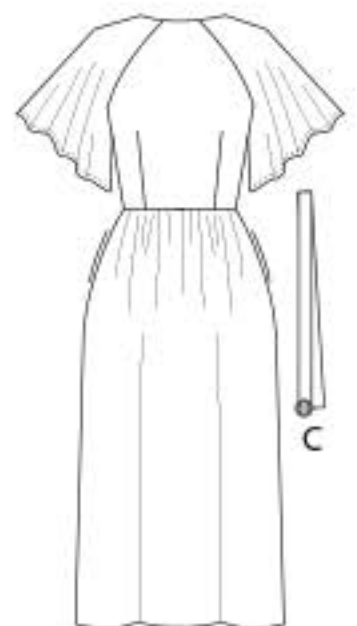
B



B



C



C