

M8094

13 PIECES/PIEZAS

Easy
Facile
Fácil

MISSES' TOPS

Suggested Fabrics: Cotton Blends, Chameuse, Crepes, Poplin.

Notions: A,B,C: Five ½" (1.3cm) Buttons. C: One Pkg. of ½" (1.3cm) Single Fold Bias Tape, 2yds. (1.9m) of ¾" (1cm) Elastic.

Sizes	6	8	10	12	14	16	18	20	22
-------	---	---	----	----	----	----	----	----	----

A

45"***	1¼	1¼	1¼	1¼	1⅜	1½	1½	1⅝	1⅝	Yd
60"***	1	1	1	1⅛	1⅛	1⅛	1⅛	1⅛	1⅛	"

B

45"***	1½	1½	1½	1½	1½	1⅞	1⅞	1⅞	1⅞	Yd
60"***	1⅞	1⅞	1⅞	1¼	1¼	1½	1½	1½	1½	"

Fusible Interfacing A,B

18, 20"	¾	¾	⅞	⅞	⅞	⅞	⅞	1	1	Yd
---------	---	---	---	---	---	---	---	---	---	----

C

45"***	1⅝	1⅝	1⅝	1⅝	1⅞	1⅞	1⅞	2	2	Yd
60"***	1⅜	1⅜	1⅜	1½	1½	1½	1⅝	1⅝	1⅝	"

Fusible Interfacing C

18, 20"	¾	¾	¾	¾	¾	⅞	⅞	1	1	"
---------	---	---	---	---	---	---	---	---	---	---

FINISHED GARMENT MEASUREMENTS

Back length from base of neck:

A,B,C	19½	19¾	20	20¼	20½	20¾	21	21¼	21½	In
-------	-----	-----	----	-----	-----	-----	----	-----	-----	----

HAUTS POUR JEUNE FEMME/ BLUSAS PARA SEÑORITAS

Tailles/Tallas	6	8	10	12	14	16	18	20	22
Françaises	34	36	38	40	42	44	46	48	50
Europeas	32	34	36	38	40	42	44	46	48

A

115cm***	1.2	1.2	1.2	1.2	1.3	1.4	1.4	1.5	1.5	m
150cm***	1.0	1.0	1.0	1.1	1.1	1.1	1.1	1.1	1.1	"

B

115cm***	1.4	1.4	1.4	1.4	1.4	1.8	1.8	1.8	1.8	m
150cm***	1.1	1.1	1.1	1.2	1.2	1.4	1.4	1.4	1.4	"

Entoilage Thermocollant A,B/ Entretela Termoadhesiva A,B

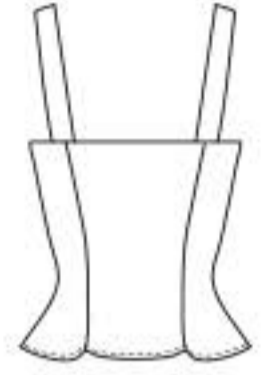
46, 51cm	0.7	0.7	0.8	0.8	0.8	0.8	0.8	1.0	1.0	m
----------	-----	-----	-----	-----	-----	-----	-----	-----	-----	---

C

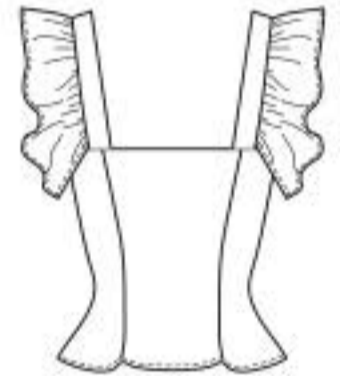
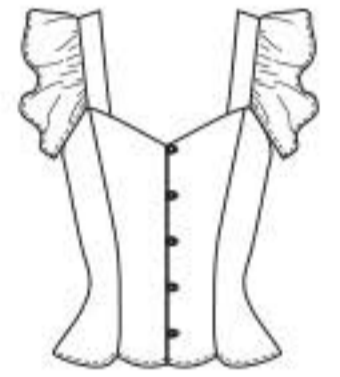
115cm***	1.5	1.5	1.5	1.5	1.8	1.8	1.8	1.9	1.9	m
150cm***	1.3	1.3	1.3	1.4	1.4	1.4	1.5	1.5	1.5	"

Entoilage Thermocollant C/ Entretela Termoadhesiva C

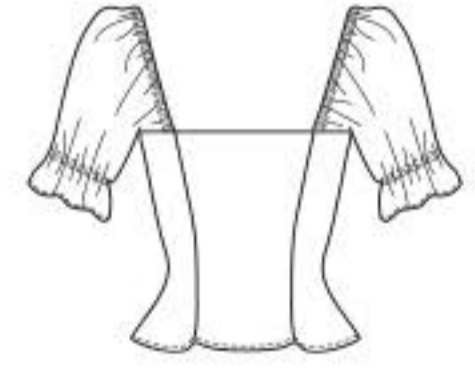
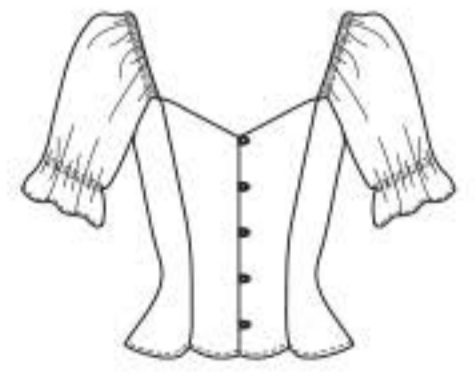
46, 51cm	0.7	0.7	0.7	0.7	0.7	0.8	0.8	1.0	1.0	m
----------	-----	-----	-----	-----	-----	-----	-----	-----	-----	---



A



B



C

*with nap **without nap ***with or without nap
*con pelusa **sin pelusa ***con o sin pelusa

*avec sens **sans sens ***avec ou sans sens