

M8095

10 PIECES/PIEZAS

Easy
Facile
Fácil

MISSES' TOPS

Suggested Fabrics: Charmeuse, Crepes, Crepe de Chine, Lawn.

Notions: **A:** One Pkg. of ¼" (0.6cm) Double Fold Bias Tape. **C:** Six ½" (1.3cm) Buttons.

Sizes	6	8	10	12	14	16	18	20	22	
A										
45"***	2¼	2¼	2¾	2½	2⅝	2¾	2¾	2⅞	3	Yd
60"***	1⅞	1⅞	1⅞	2	2	2⅛	2¾	2½	2½	"
B										
45"***	2⅞	2⅞	3	3	3¼	3¾	3⅝	3⅝	3⅝	Yd
60"***	2	2⅛	2¼	2¾	2½	2½	2⅝	2⅞	2⅞	"
C										
45"***	2¾	2⅞	2⅞	3	3	3¾	3¾	4⅛	4⅛	Yd
60"***	2⅛	2¼	2¼	2¾	2¾	2½	2½	2⅝	2⅝	"
Fusible Interfacing C										
18, 20"	½	½	½	½	½	½	½	⅝	⅝	Yd

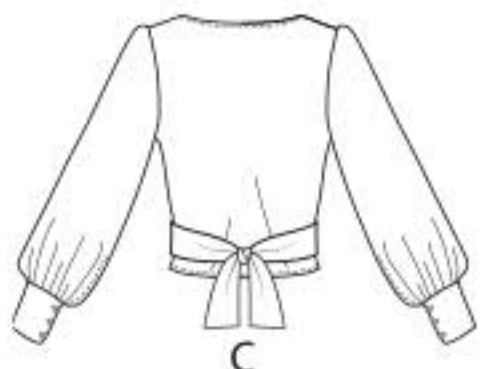
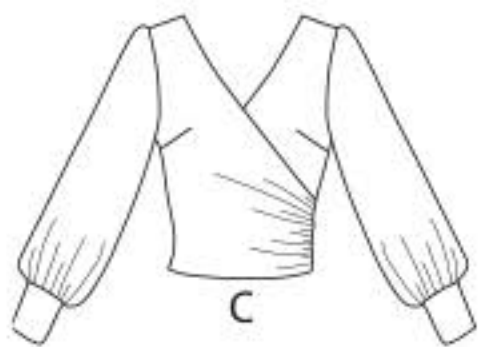
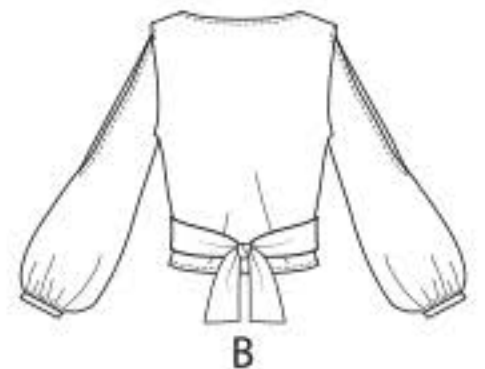
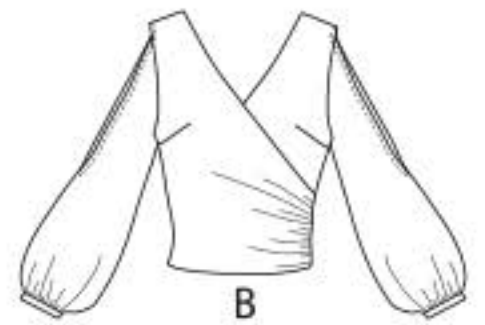
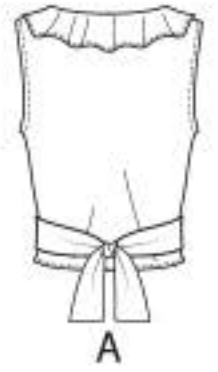
FINISHED GARMENT MEASUREMENTS

Back length from base of neck:

A,B,C	18	18¼	18½	18¾	19	19¼	19½	19¾	20	In
-------	----	-----	-----	-----	----	-----	-----	-----	----	----

HAUTS POUR JEUNE FEMME/BLUSAS PARA SEÑORITAS

Tailles/Tallas	6	8	10	12	14	16	18	20	22	
Françaises	34	36	38	40	42	44	46	48	50	
Europeas	32	34	36	38	40	42	44	46	48	
A										
115cm***	2.1	2.1	2.2	2.3	2.4	2.6	2.6	2.7	2.8	m
150cm***	1.8	1.8	1.8	1.9	1.9	2.0	2.2	2.3	2.3	"
B										
115cm***	2.7	2.7	2.8	2.8	3.0	3.1	3.4	3.4	3.4	m
150cm***	1.9	2.0	2.1	2.2	2.3	2.3	2.4	2.7	2.7	"
C										
115cm***	2.6	2.7	2.7	2.8	2.8	3.5	3.5	3.8	3.8	m
150cm***	2.0	2.1	2.1	2.2	2.2	2.3	2.3	2.4	2.4	"
Entoilage Thermocollant C/ Entretela Termoadhesiva C										
46, 51cm	0.5	0.5	0.5	0.5	0.5	0.5	0.5	0.6	0.6	m



*with nap **without nap ***with or without nap
*con pelusa **sin pelusa ***con o sin pelusa

*avecsens **sans sens ***avec ou sans sens