

M8098

6PIECES/PIEZAS

Easy
Facile
Fácil

MISSES' PANTS

Suggested Fabrics: Crepes, Gauze, Challis, Stable Knits.

Notions: 1 $\frac{3}{8}$ yds. (1.3m) of 1" (2.5cm) Elastic.

Sizes	XS	S	M	L	XL	XXL
	(4-6)	(8-10)	(12-14)	(16-18)	(20-22)	(24-26)
Sizes- European	30-32	34-36	38-40	42-44	46-48	50-52

A							
45"***	2 $\frac{3}{4}$	2 $\frac{3}{4}$	2 $\frac{3}{4}$	2 $\frac{3}{4}$	2 $\frac{3}{4}$	2 $\frac{3}{4}$	Yd
60"***	2	2	2 $\frac{1}{8}$	2 $\frac{1}{8}$	2 $\frac{3}{8}$	2 $\frac{3}{8}$	"

B							
45"***	3 $\frac{1}{4}$	3 $\frac{1}{4}$	3 $\frac{1}{4}$	3 $\frac{5}{8}$	3 $\frac{5}{8}$	3 $\frac{3}{4}$	Yd
60"***	2 $\frac{7}{8}$	2 $\frac{7}{8}$	2 $\frac{7}{8}$	2 $\frac{7}{8}$	2 $\frac{7}{8}$	3 $\frac{1}{8}$	"

C							
45"***	2 $\frac{1}{4}$	2 $\frac{1}{4}$	2 $\frac{1}{4}$	2 $\frac{1}{4}$	2 $\frac{5}{8}$	2 $\frac{5}{8}$	Yd
60"***	1 $\frac{3}{4}$	1 $\frac{3}{4}$	1 $\frac{3}{4}$	1 $\frac{3}{4}$	1 $\frac{3}{4}$	1 $\frac{3}{4}$	"

Contrast C							
45"***	1 $\frac{5}{8}$	1 $\frac{5}{8}$	1 $\frac{5}{8}$	1 $\frac{5}{8}$	1 $\frac{5}{8}$	1 $\frac{5}{8}$	Yd
60"***	1 $\frac{1}{4}$	1 $\frac{1}{4}$	1 $\frac{1}{4}$	1 $\frac{1}{4}$	1 $\frac{1}{4}$	1 $\frac{5}{8}$	"

FINISHED GARMENT MEASUREMENTS

A,B,C Hip	43	45	48 $\frac{1}{2}$	52 $\frac{1}{2}$	56 $\frac{1}{2}$	60 $\frac{1}{2}$	In
A Leg Width	67 $\frac{1}{2}$	68 $\frac{1}{2}$	69 $\frac{1}{2}$	70 $\frac{1}{2}$	71 $\frac{1}{2}$	72 $\frac{1}{2}$	"
B,C Leg Width	52	53	54	55	56	57	"
Side length from waist:							
A	32	32	32	32	32	32	In
B,C	41	41	41	41	41	41	"

PANTALON POUR JEUNE FEMME/ PANTALÓN PARA SEÑORITAS

Tailles/ Tallas	TP/XP	P	M	G	TG/XG	TTG/XXG
Françaises	32-34	36-38	40-42	44-46	48-50	52-54
Europeas	30-32	34-36	38-40	42-44	46-48	50-52

A							
115cm***	2.6	2.6	2.6	2.6	2.6	2.6	m
150cm***	1.9	1.9	2.0	2.0	2.2	2.2	"

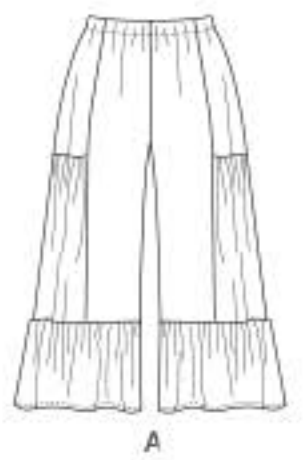
B							
115cm***	3.0	3.0	3.0	3.4	3.4	3.5	m
150cm***	2.7	2.7	2.7	2.7	2.7	2.9	"

C							
115cm***	2.1	2.1	2.1	2.1	2.4	2.4	m
150cm***	1.6	1.6	1.6	1.6	1.6	1.6	"

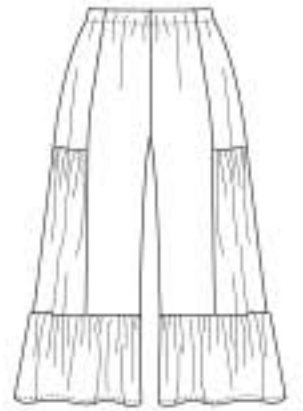
Contraste C							
115cm***	1.5	1.5	1.5	1.5	1.5	1.5	m
150cm***	1.2	1.2	1.2	1.2	1.2	1.5	"

*with nap **without nap ***with or without nap
*con pelusa **sin pelusa ***con o sin pelusa

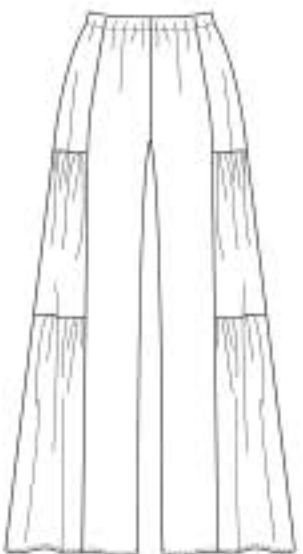
*avec sens **sans sens ***avec ou sans sens



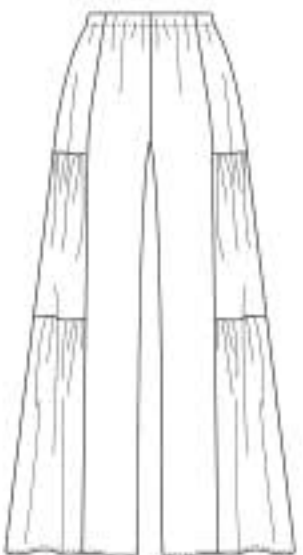
A



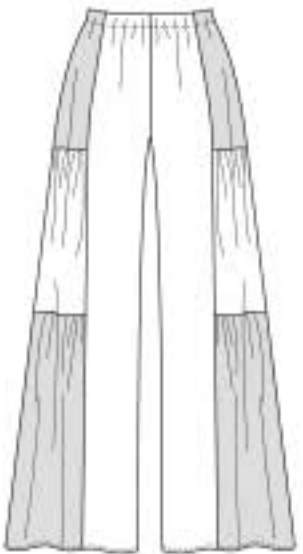
A



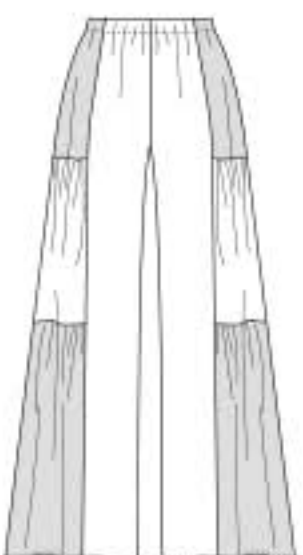
B



B



C



C