

M8101

14 PIECES/PIEZAS

Average
Moin sFacile
Intermedio

MISSES' AND WOMEN'S ROMPER, JUMPSUIT AND BELT

Suggested Fabrics: Chino, Denim, Linen, Twill. **Lining** in Cotton Blends.

Notions: **A,B,C:** Six 5/8" (1.5cm) Buttons, 1 1/8 yds. (1.1m) of 3/8" (1cm) Sew-Through Boning. **C:** One 2" (5cm) Slide Buckle.

Sizes	MISSES'					WOMEN'S				Yd
	8	10	12	14	16	18W	20W	22W	24W	
A										
45"***	1 7/8	1 7/8	1 7/8	1 7/8	1 7/8	2 1/4	2 1/4	2 1/4	2 1/4	Yd
60"***	1 1/2	1 1/2	1 1/2	1 1/2	1 1/2	1 5/8	1 5/8	1 5/8	1 5/8	"
Fusible Interfacing A										
18, 20"	2 1/8	2 1/8	2 1/8	2 1/8	2 1/8	2 1/2	2 1/2	2 1/2	2 1/2	Yd
B										
45"***	2 1/2	2 1/2	2 1/2	2 1/2	2 1/2	2 7/8	2 7/8	2 7/8	2 7/8	Yd
60"***	1 7/8	1 7/8	1 7/8	1 7/8	1 7/8	2 1/8	2 1/8	2 1/8	2 1/8	"
Fusible Interfacing B-	18, 20" - 2 1/8 yds.									
C										
45"***	3 1/8	3 1/8	3 1/8	3 1/8	3 1/8	3 1/2	3 1/2	3 1/2	3 1/2	Yd
60"***	2 3/8	2 3/8	2 3/8	2 3/8	2 3/8	2 7/8	2 7/8	2 7/8	2 7/8	"
Fusible Interfacing C										
18, 20"	2 3/8	2 3/8	2 1/2	2 1/2	2 5/8	3 1/8	3 1/8	3 1/8	3 1/8	Yd

Lining A,B,C- 45"*** - 3/4 yd.

FINISHED GARMENT MEASUREMENTS

A Leg Width	22 1/2	23	23 1/2	24	24 1/2	28 3/4	29 1/4	29 3/4	30 1/4	In
B Leg Width	21	21 1/2	22	22 1/2	23	26 1/2	27	27 1/2	28	"
C Leg Width	21 1/2	22	22 1/2	23	23 1/2	26 3/4	27 1/4	27 3/4	28 1/4	"

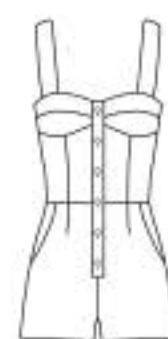
BARBOTEUSE, JUMPSUIT ET CEINTURE POUR JEUNE FEMME ET FEMME MAMELUCO, JUMPSUIT Y CINTURÓN PARA SEÑORITAS Y SEÑORAS

Tailles/ Tallas Françaises Europeas	JEUNE FEMME/ SEÑORITAS					FEMME/ SEÑORAS				
	8	10	12	14	16	18W	20W	22W	24W	
A										
115cm***	1.8	1.8	1.8	1.8	1.8	2.1	2.1	2.1	2.1	m
150cm***	1.4	1.4	1.4	1.4	1.4	1.5	1.5	1.5	1.5	"
Entoilage Thermocollant A/ Entretela Termoadhesiva A										
46, 51cm	2.0	2.0	2.0	2.0	2.0	2.3	2.3	2.3	2.3	m
B										
115cm***	2.3	2.3	2.3	2.3	2.3	2.7	2.7	2.7	2.7	m
150cm***	1.8	1.8	1.8	1.8	1.8	2.0	2.0	2.0	2.0	"
Entoilage Thermocollant B/ Entretela Termoadhesiva B-	18, 20" - 2.0m.									
C										
115cm***	2.9	2.9	2.9	2.9	2.9	3.2	3.2	3.2	3.2	m
150cm***	2.2	2.2	2.2	2.2	2.2	2.7	2.7	2.7	2.7	"
Entoilage Thermocollant C/ Entretela Termoadhesiva C										
46, 51cm	2.2	2.2	2.3	2.3	2.4	2.9	2.9	2.9	2.9	m

Doublure A,B,C/ Forro A,B,C- 115cm** - 0.7m.

*with nap **without nap ***with or without nap
*con pelusa **sin pelusa ***con o sin pelusa

*avecsens **sans sens ***avec ou sans sens



A



B



C