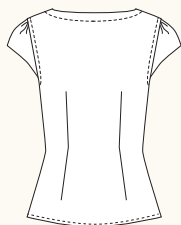


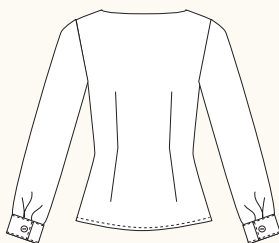
ALMA BLOUSE / 3 VIEWS



A - BACK



B - BACK



C - BACK

DESCRIPTION: Semi-fitted pullover blouse features neckline and sleeve variations and optional fabric belt. View A has a notched neckline and cap sleeves. View B has a contrast Peter Pan collar and elbow-length sleeves. View C has long sleeves with cuffs and a round neckline. Mix and match any sleeve with any neckline for unlimited possibilities.

RECOMMENDED FABRICS: Lightweight woven fabrics such as cotton voile or lawn, rayon challis, shirting fabrics, seersucker, cotton blends. Allow extra fabric to match plaids or stripes.

NOTIONS: Thread, 1 metre of fusible interfacing, one 30cm invisible zipper. View C: Two 2cm buttons

BODY MEASUREMENTS (centimetres)

	0	2	4	6	8	10	12	14	16
BUST	76	79	81	84	88	91	95	99	104
WAIST	61	64	66	69	72	76	80	84	89
HIP	91	94	97	99	103	107	110	114	119

FABRIC REQUIREMENTS (metres)

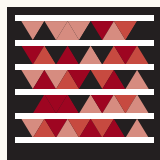
A - 115cm	1.8	1.8	1.8	1.8	1.8	2.1	2.1	2.1	2.1
A - 150 cm	1.6	1.6	1.6	1.6	1.6	1.6	1.6	1.6	1.6
B - 115 cm	1.8	1.8	1.8	1.8	1.8	2.1	2.1	2.1	2.1
B - 150 cm	1.1	1.1	1.1	1.1	1.1	1.1	1.1	1.1	1.1
B - Contrast 115 cm	0.7	0.7	0.7	0.7	0.7	0.7	0.7	0.7	0.7
C - 115 cm	2.3	2.3	2.3	2.3	2.3	2.3	2.3	2.3	2.3
C - 150 cm	1.9	1.9	1.9	1.9	1.9	1.9	1.9	1.9	1.9

FINISHED MEASUREMENTS (centimetres)

BUST	86	89	91	94	98	102	105	109	114
WAIST	76	79	81	84	88	91	95	99	104
HEM	91	94	97	99	103	107	110	114	119
BACK (length)	56	57	57	58	58	59	60	60	61

SNAP ME!

View images of the blouse online



Get the free mobile app at <http://gettag.mobi>