

## CORDOVA JACKET / 2 VIEWS

**DESCRIPTION:** Fitted jacket with princess seams features peplum detail, pleats at sleeve cap, and zip front closure. Jacket is fully lined. View A has a flirty double layered peplum and View B has peplum-style seaming without the extra volume.

**RECOMMENDED FABRICS:** Medium weight woven fabrics such as cotton blends, gabardine, linen, crepe and wool blends. Lightweight brocade and tweeds also suitable. For lining: lining fabrics. Allow extra fabric to match plaids, stripes or one-way designs.

**NOTIONS:** Thread, 1 metre of fusible interfacing, 50cm separating zipper (sizes 0-8), 53cm separating zipper (sizes 10-16).



A - BACK

## BODY MEASUREMENTS (centimetres)

	0	2	4	6	8	10	12	14	16
BUST	76	79	81	84	88	91	95	99	104
WAIST	61	64	66	69	72	76	80	84	89
HIP	91	94	97	99	103	107	110	114	119

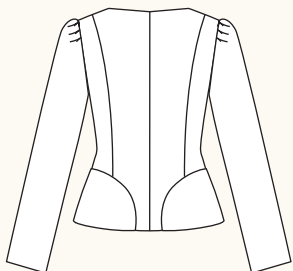
## FABRIC REQUIREMENTS (metres)

## VIEW A

115 cm	2.5	2.5	2.5	2.5	2.5	2.5	2.5	2.5	2.5
150 cm	1.8	1.8	1.8	1.8	1.8	1.8	1.8	1.8	1.8
Lining	2.5	2.5	2.5	2.5	2.5	2.5	2.5	2.5	2.5

## VIEW B

115 cm	2.5	2.5	2.5	2.5	2.5	2.5	2.5	2.5	2.5
150 cm	1.8	1.8	1.8	1.8	1.8	1.8	1.8	1.8	1.8
Lining	2.1	2.1	2.1	2.1	2.1	2.1	2.1	2.1	2.1



B - BACK

## SNAP ME!

View images of the real jacket online



Get the free mobile app at  
<http://gettag.mobi>

## FINISHED MEASUREMENTS (centimetres)

BUST	86	89	91	94	98	102	105	109	114
WAIST	76	79	81	84	88	91	95	99	104
HEM	91	94	97	99	103	107	110	114	119
BACK (length)	55	55	56	57	57	58	58	59	60