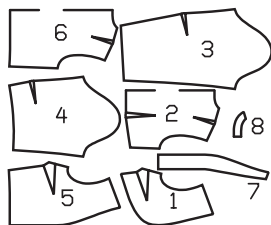


**BOLERO**

**ABC:** semi-fitted, semi-ajusté,  
semi-ajustado.



Sizes Tailles • Tallas	US Eur.	45 ins / 114 cm								55 ins / 140 cm							
		10 36	12 38	14 40	16 42	18 44	20 46	22 48	10 36	12 38	14 40	16 42	18 44	20 46	22 48		
<b>A</b> single edge scalloped un bord festonné canto ondulado a un lado	yds m	1 1/8 1.00	1 1/4 1.05	1 1/4 1.10	1 3/8 1.15	1 3/8 1.20	1 1/2 1.25	1 1/2 1.25	1 1/8 1.00	1 1/4 1.05	1 1/4 1.10	1 3/8 1.15	1 3/8 1.20	1 1/2 1.25	1 1/2 1.25		
<b>B</b>	yds m	1 0.85	1 1/8 0.95	1 1/8 0.95	1 1/8 0.95	1 3/8 1.20	1 3/8 1.20	1 3/8 1.20	1 0.85	1 0.90	1 0.90	1 0.90	1 1/8 0.95	1 1/8 0.95	1 1/8 0.95		
<b>C</b>	yds m	1 1/4 1.05	1 1/4 1.05	1 3/8 1.15	1 3/8 1.40	1 3/8 1.40	1 3/4 1.60	1 3/4 1.60	1 1/4 1.05	1 1/4 1.05	1 1/4 1.05	1 1/4 1.10	1 1/4 1.10	1 3/8 1.15	1 3/8 1.15		

→ with nap • avec sens • con dirección

**A:** Lace fabric  
**B:** Novelty fabrics  
**C:** Satin, brocade

**AB:**

**A:** 1 1/8 – 2 1/8 yds  
(1.60 m – 2.10 m)  
**B:** 2 1/8 – 3 yds  
(2.30 m – 2.70 m)

**C:**  
Interfacing • triplure • entretela  
36" x 24" (90 cm x 60 cm)

**A:** dentelle  
**B:** tissu structuré  
**C:** satin, brocart

**A:** Tela de encaje  
**B:** géneros de fantasía  
**C:** satén, brocado

**AB:** 14 1/2" – 15 1/2"  
(36 cm – 39 cm)  
**C:** 16 1/2" – 17 3/4"  
(42 cm – 45 cm)

**C:** 34 3/4" – 45"  
(88 cm – 114 cm)