

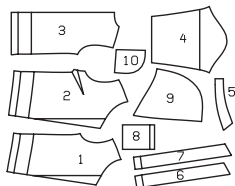
JACKET • VESTE • CHAQUETA

ABCDE: loose fitting, ample, amplio.

Sizes 20 (46) to 24 (50) with bust darts.

Tailles 46 à 50 avec pinces de poitrine.

Tallas 46 a 50 con pinzas de pecho.



Sizes Tailles • Tallas	45 ins / 114 cm								55 ins / 140 cm							
	US	12	14	16	18	20	22	24	12	14	16	18	20	22	24	
A	yds	2 ⁷ / ₈	2 ⁷ / ₈	2 ⁷ / ₈	2 ⁷ / ₈	3 ¹ / ₂	3 ¹ / ₂	3 ¹ / ₂	2 ⁵ / ₈	2 ⁵ / ₈	2 ⁵ / ₈	2 ⁵ / ₈	2 ³ / ₄	2 ³ / ₄	2 ³ / ₄	
	m	2.55	2.55	2.55	2.55	3.05	3.05	3.05	2.40	2.40	2.40	2.40	2.50	2.50	2.50	
B	yds	3	3	3	3	3 ³ / ₄	3 ³ / ₄	3 ³ / ₄	2 ⁷ / ₈	2 ⁷ / ₈	2 ⁷ / ₈	2 ⁷ / ₈	3	3	3	
	m	2.65	2.65	2.65	2.65	3.40	3.40	3.40	2.55	2.55	2.55	2.55	2.65	2.65	2.65	
C	yds	2 ¹ / ₈	2 ¹ / ₈	2 ¹ / ₈	2 ¹ / ₈	2 ¹ / ₂	2 ¹ / ₂	2 ¹ / ₂	2 ¹ / ₈	2 ¹ / ₈	2 ¹ / ₈	2 ¹ / ₈	2 ¹ / ₄	2 ¹ / ₄	2 ¹ / ₄	
	m	1.90	1.90	1.90	1.90	2.15	2.15	2.15	1.90	1.90	1.90	1.90	1.95	1.95	1.95	
D	yds	3	3	3	3	3 ¹ / ₄	3 ¹ / ₄	3 ¹ / ₄	3	3	3	3	3	3	3	
	m	2.70	2.70	2.70	2.70	2.85	2.85	2.85	2.65	2.65	2.65	2.65	2.65	2.65	2.65	
E	yds	3 ¹ / ₄	3 ¹ / ₄	3 ¹ / ₄	3 ¹ / ₄	3 ¹ / ₂	3 ¹ / ₂	3 ¹ / ₂	3	3	3	3	3	3	3	
	m	2.85	2.85	2.85	2.85	3.15	3.15	3.15	2.65	2.65	2.65	2.65	2.65	2.65	2.65	

→ with nap • avec sens • con dirección

ACD: fulled fabrics
(edges left unneatened)

BE: linen

ACD: tissu foulé
(assemblage à coutures apparentes)

BE: lin

ACD: Telas batanadas
(confección con el canto abierto)

BE: lino

ABCDE:

BE: Interfacing • triplure • entretrala
B: 36" x 40" (90 cm x 100 cm)
E: 36" x 32" (90 cm x 80 cm)

AB

C

DE

ABDE: 47"-58½"
(119-149 cm)

C: 48"-60"
(122-152 cm)

↑ **ABDE:** 28"-29½"
(71-74 cm)

↓ **C:** 24"-25½"
(61-64 cm)