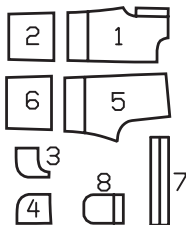


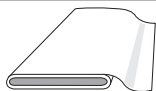
PANTS • PANTALON

ABC: semi-fitted,
semi-ajusté, semi-ajustado.



Sizes Tailles • Tallas	US Eur.	45 ins / 114 cm					55 ins / 140 cm				
		2 92	3 98	4 104	5 110	6 116	2 92	3 98	4 104	5 110	6 116
A	yds	7/8	1 1/8	1 1/8	1 1/4	1 1/4	7/8	7/8	7/8	1	1
	m	0.75 →	0.95 →	0.95 →	1.05 →	1.05 →	0.65 →	0.75 →	0.75 →	0.85 →	0.85 →
B	yds	7/8	7/8	7/8	7/8	7/8	3/4	3/4	3/4	3/4	3/4
	m	0.65 →	0.70 →	0.70 →	0.80 →	0.80 →	0.55 →	0.60 →	0.60 →	0.60 →	0.60 →
C	yds	3/4	3/4	3/4	7/8	7/8	5/8	5/8	5/8	5/8	5/8
	m	0.55 →	0.60 →	0.60 →	0.65 →	0.65 →	0.45 →	0.50 →	0.50 →	0.50 →	0.50 →

→ with nap • avec sens • con dirección



Cotton fabrics,
lightweight
denims

Cotonnade,
toile de jean
légère

Géneros de
algodón, telas
tejanas ligeras

