

U.S. \$19.95 CAN. \$19.95 ● YELLOW L

B6534

VERY EASY/TRÈS FACILE

MISSES'/MEN'S COAT, TUNIC, AND PANTS: Coat has stand collar and no front closures. Tunics have sleeve and length variations and side slits, wrong side of fabric will show. **B:** Patch pockets. Pull-on pants have elastic waist.

Combinations: **XM(S-M-L), XN(XL-XXL-XXXL)**

FABRICS: Cotton Blends, Broadcloth, Linen, Jacquard, Satin.

Unsuitable for obvious diagonals.

*With Nap. **Without Nap.

SIZES	S	M	L	XL	XXL	XXXL
	34-36	38-40	42-44	46-48	50-52	54-56
A 45"/**	3½	3½	3⅝	3¾	3⅞	4¼
60"/**	2⅞	2⅞	2⅞	2⅞	2⅞	3
FUSIBLE INTERFACING A - 18", 20" - ⅞ yd.						
B 45"/**	2	2	2⅝	2⅝	2¾	2¾
60"/**	1⅜	1⅜	2	2⅞	2⅞	2⅞
C 45"/**	2½	2½	3½	3½	3⅝	3¾
60"/**	2	2	2	2⅝	2⅝	2¾
FUSIBLE INTERFACING B, C - 18", 20" - ½ yd.						
D 45"/**	2¾	2¾	2¾	2⅞	3	3¼
60"/**	1⅞	2	2½	2⅝	2¾	2¾

NOTIONS: D: 1½ yds. of ¾" Elastic.

FINISHED GARMENT MEASUREMENTS

Width, each leg

D	18½	19½	20½	21½	22½	23½
---	-----	-----	-----	-----	-----	-----

Back length from base of your neck

A	40¼	40¾	41¼	41¾	42¼	42¾
---	-----	-----	-----	-----	-----	-----

B	30	30½	31	31½	32	32½
---	----	-----	----	-----	----	-----

C	40	40½	41	41½	42	42½
---	----	-----	----	-----	----	-----

Side length from waist

D	43	43	43	43	43	43
---	----	----	----	----	----	----

MANTEAU, TUNIQUE ET PANTALON (J. FEMME/HOMME): Manteau à col droit, sans fermetures sur le devant. Tuniques à variations de manche et de longueur; côtés fendus, l'envers du tissu sera visible. **B:** Poches plaquées. Pantalon à taille élastique.

Séries: **XM(P-M-G), XN(TG-TTG-TTTG)**

TISSUS: Cotonnade, Toile, Toile de lin, Jacquard, Satin.

Grandes diagonales ne conviennent pas.

*Avec Sens. **Sans Sens.

TAILLES	P	M	G	TG	TTG	TTTG
	34-36	38-40	42-44	46-48	50-52	54-56
A 115cm*/**	3.20	3.20	3.40	3.50	3.60	3.70
150cm*/**	2.00	2.00	2.70	2.70	2.70	2.80
ENTOILAGE THERMOCOLLANT A - 46, 51cm - 0.80m						
B 115cm*/**	1.90	1.90	2.40	2.40	2.60	2.60
150cm*/**	1.30	1.30	1.90	2.00	2.00	2.00
C 115cm*/**	2.30	2.30	3.20	3.20	3.40	3.50
150cm*/**	1.90	1.90	1.90	2.40	2.40	2.60
ENTOILAGE THERMOCOLLANT B, C - 46, 51cm - 0.50m						
D 115cm*/**	2.60	2.60	2.60	2.70	2.80	3.00
150cm*/**	1.80	1.90	2.30	2.40	2.60	2.60

MERCERIE: D: 1.4m d'élastique de 2cm.

ME SURES DU VÊTEMET FINI

Largeur, chaque jambe

D	47	50	52	55	57	60
---	----	----	----	----	----	----

Longueur - dos, votre nuque à l'ourlet

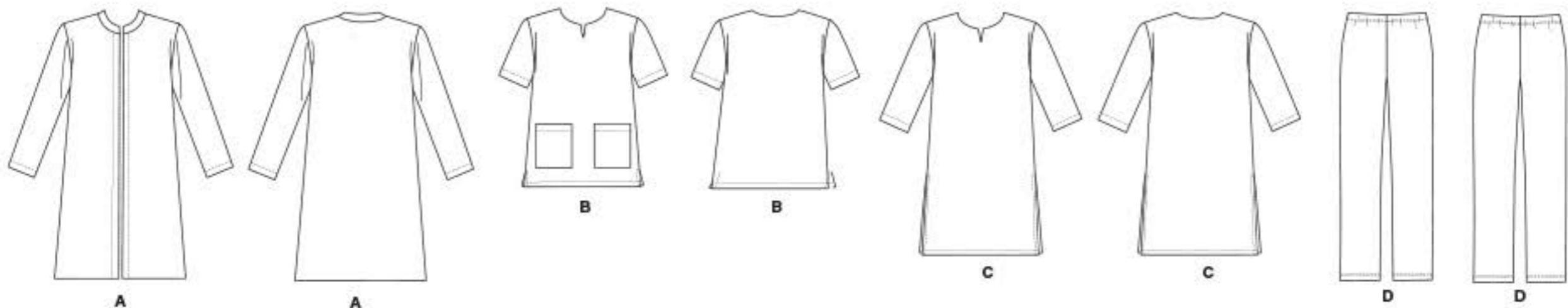
A	102	103	105	106	107	109
---	-----	-----	-----	-----	-----	-----

B	76	78	79	80	81	83
---	----	----	----	----	----	----

C	102	103	104	105	107	108
---	-----	-----	-----	-----	-----	-----

Longueur - côté, taille à l'ourlet

D	109	109	109	109	109	109
---	-----	-----	-----	-----	-----	-----



BUTTERICK PATTERN, 120 BROADWAY, NEW YORK 10271 © 2017 The McCall Pattern Company, Inc.

• www.butterick.com • PRINTED IN U.S.A. ALL RIGHTS RESERVED. SOLD FOR INDIVIDUAL HOME USE ONLY AND NOT FOR COMMERCIAL OR MANUFACTURING PURPOSE RESERVE À UN USAGE PERSONNEL.

