

B6729

13 PIECES

Easy
Facile

MISSES' DRESS

Fabrics: Crepe, Linen, Cotton Blends, Challis. Unsuitable for obvious diagonals.

Notions: A,B: One 22" (56cm) Invisible Zipper A: Two Pkgs. of 1/2" (1.3cm) Double Fold Bias Tape.

Sizes	6	8	10	12	14	16	18	20	22	
A										
45"/**	2 1/8	2 1/8	2 1/8	2 1/4	2 1/2	2 1/2	2 5/8	2 5/8	2 3/4	Yd
60"/**	1 5/8	1 5/8	1 5/8	1 3/4	1 3/4	1 3/4	1 3/4	2	2	"
Fusible Interfacing A, B-18, 20"										
	1	1	1	1	1 1/8	1 1/8	1 1/4	1 1/4	1 3/8	Yd
B										
45"/**	2 5/8	2 3/4	2 3/4	2 3/4	3 1/4	3 1/4	3 1/4	3 1/2	3 1/2	Yd
60"/**	2	2	2	2 1/8	2 1/8	2 3/8	2 3/8	2 1/2	2 1/2	"
Fusible Interfacing B-18, 20"										
	1	1	1	1	1 1/8	1 1/8	1 1/4	1 1/4	1 3/8	Yd

FINISHED GARMENT MEASUREMENTS

Back length from base of neck:

A,B	6	8	10	12	14	16	18	20	22	In
	36 1/2	36 3/4	37	37 1/4	37 1/2	37 3/4	38	38 1/4	38 1/2	

ROBE POUR JEUNE FEMME

Tissus: Crêpe, Toile de Lin, Cottonnades, Challis. Grandes diagonales ne conviennent pas.

Mercreie: A,B: 1 Fermeture à Glissière Invisible de 56cm. A: 2 Paquets de Ruban de Biais Double de 1.3cm.

Tailles Françaises	6	8	10	12	14	16	18	20	22	
	34	36	38	40	42	44	46	48	50	
A										
115cm*/**	2.0	2.0	2.0	2.1	2.2	2.2	2.4	2.4	2.6	m
150cm*/**	1.5	1.5	1.5	1.6	1.6	1.6	1.6	1.9	1.9	"
Fusible Interfacing A-46, 51cm										
	1.0	1.0	1.0	1.0	1.1	1.1	1.2	1.2	1.3	m
B										
115cm*/**	2.4	2.6	2.6	2.6	3.0	3.0	3.0	3.2	3.2	m
150cm*/**	1.9	1.9	1.9	2.0	2.0	2.2	2.2	2.3	2.3	"
Fusible Interfacing B-46, 51cm										
	1.0	1.0	1.0	1.0	1.1	1.1	1.2	1.2	1.3	m

MESURES DU VÊTEMENT FINI

Longueur - dos, votre nuque à l'ourlet:

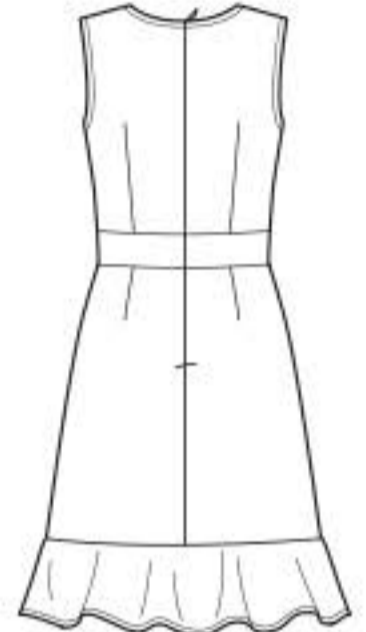
A,B	6	8	10	12	14	16	18	20	22	cm
	93	93.5	94	95	95	96	97	97.5	98	

*with nap **without nap

*avec sens **sans sens



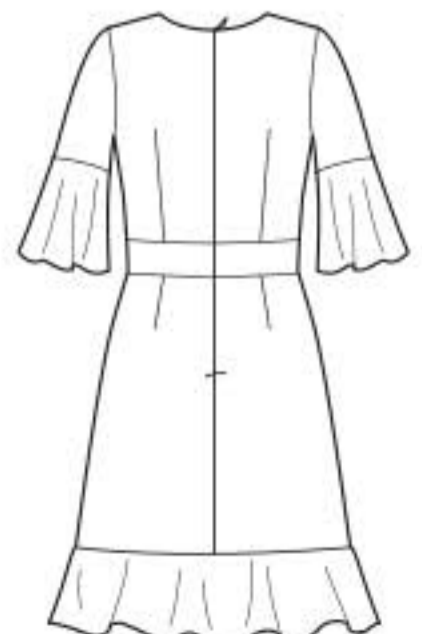
A



A



B



B