

B6733

14 PIECES

Easy
Facile

MISSES' TOP

Fabrics: Cotton Blends, Lightweight Linen, Rayon, Broadcloth. Unsuitable for obvious diagonals.

Notions: A: Six 1/2" (1.3cm) Buttons. B,C: Five 1/2" (1.3cm) Buttons. C: 7/8 yd. (0.8m) of 1/4" (0.6cm) Elastic

Sizes	6	8	10	12	14	16	18	20	22
-------	---	---	----	----	----	----	----	----	----

A

45"/** 1 5/8 1 5/8 1 3/4 2 1/8 2 1/8 2 1/4 2 1/4 2 3/8 2 3/8 Yd

60"/** 1 1/4 1 1/4 1 1/4 1 3/8 1 3/8 1 3/8 1 5/8 1 5/8 1 5/8 "

Fusible Interfacing A

18, 20" 3/4 3/4 3/4 7/8 7/8 7/8 7/8 7/8 7/8 Yd

B

45"/** 2 3/8 2 3/8 2 3/8 2 3/8 2 1/2 2 1/2 2 5/8 2 5/8 2 5/8 Yd

60"/** 1 3/4 1 3/4 1 3/4 1 3/4 1 7/8 2 2 2 2 2 "

C

45"/** 2 2 2 1/8 2 1/2 2 5/8 2 5/8 2 5/8 2 5/8 2 3/4 Yd

60"/** 1 3/4 1 3/4 1 7/8 1 7/8 2 2 2 2 2 "

Fusible Interfacing B,C

18, 20" 3/4 3/4 7/8 7/8 7/8 7/8 7/8 7/8 7/8 Yd

FINISHED GARMENT MEASUREMENTS

A,B,C Width 40 41 42 43 1/2 45 1/2 47 1/2 49 1/2 51 1/2 53 1/2 In

Back length from base of neck:

A,B,C 24 1/4 24 1/2 24 3/4 25 25 1/4 25 1/2 25 3/4 26 26 1/4 In

HAUTS POUR JEUNE FEMME

Tissus: Cotonnades, Lin Léger, Rayonne, Broadcloth. Grandes diagonales ne conviennent pas.

Mercerie: A: 6 Boutons de 1.3cm. B,C: 5 Boutons de 1.3cm. C: 0.8m d'Élastique de 0.6cm.

Tailles	6	8	10	12	14	16	18	20	22
---------	---	---	----	----	----	----	----	----	----

A

115cm/** 1.5 1.5 1.6 2.0 2.0 2.1 2.1 2.2 2.2 m

150cm/** 1.2 1.2 1.2 1.3 1.3 1.3 1.5 1.5 1.5 "

Entoilage Thermocollant A

46, 51cm 0.7 0.7 0.7 0.8 0.8 0.8 0.8 0.8 0.8 m

B

115cm/** 2.2 2.2 2.2 2.2 2.3 2.3 2.4 2.4 2.4 m

150cm/** 1.6 1.6 1.6 1.6 1.8 1.9 1.9 1.9 1.9 "

C

115cm/** 1.9 1.9 2.0 2.3 2.4 2.4 2.4 2.4 2.6 m

150cm/** 1.6 1.6 1.8 1.8 1.9 1.9 1.9 1.9 1.9 "

Entoilage Thermocollant B,C

46, 51cm 0.7 0.7 0.8 0.8 0.8 0.8 0.8 0.8 0.8 m

MESURES DU VÊTEMENT FINI

A,B,C Largeur 102 104 107 111 115 121 126 131 136 cm

Longueur - dos, votre nuque à l'ourlet:

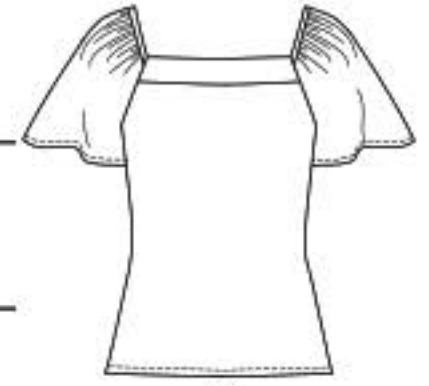
A,B,C 62 62 63 64 64 65 65 66 67 cm

*with nap **without nap

*avecsens **sans sens



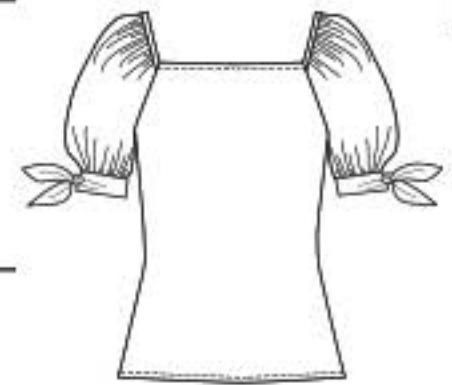
A



A



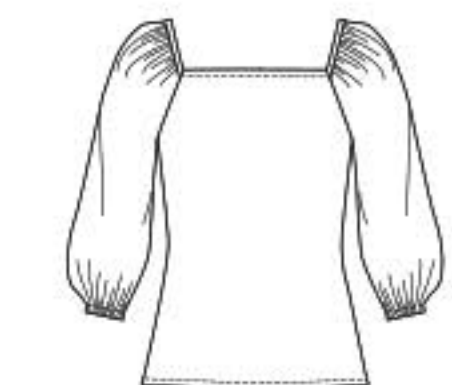
B



B



C



C