

B6757

12 PIECES

Easy
Facile

MISSE'S DRESSES AND SASH

Fabrics: Gauze, Crepe, Double Georgette, Cotton Blends. Unsuitable for obvious diagonals.

Notions: A, B: 4¾ yds. (4.4 m) of ¼" (0.6cm) Elastic, One Pkg. of ½" (1.3cm) Single Fold Bias Tape.

Sizes	8	10	12	14	16	18	20	22	24	
Dress and Sash A										
45"/**	3⅞	3¼	3⅜	3⅜	3⅜	3⅜	3½	3½	3½	Yd
60"/**	2⅞	2⅞	2⅞	2⅞	2⅞	3⅞	3⅞	3⅞	3¼	"
Dress B										
45"/**	4¾	4¾	4¾	4⅞	4⅞	4⅞	4⅞	4⅞	4⅞	Yd
60"/**	3⅞	3⅞	3⅞	4⅞	4½	4½	4½	4½	4½	"

FINISHED GARMENT MEASUREMENTS

Back length from base of neck:

	8	10	12	14	16	18	20	22	24	In
Dress A	45¼	45½	45¾	46	46¼	46½	46¾	47	47¼	
Dress B	52¾	53	53¼	53½	53¾	54	54¼	54½	54¾	"

ROBES ET CEINTURE-ÉCHARPE POUR JEUNE FEMME

Tissus: Gaze, Crêpe, Crêpe Georgette Double, Cottonnades. Grandes diagonales ne conviennent pas.

Mercerie: A, B: 4.4m d'élastique de 0.6cm, 1 paquet de ruban de biais simple de 1.3cm.

Tailles	8	10	12	14	16	18	20	22	24	
Françaises	36	38	40	42	44	46	48	50	52	
Robe et Ceinture A										
115cm*/**	2.9	3.0	3.1	3.1	3.1	3.1	3.2	3.2	3.2	m
150cm*/**	2.2	2.2	2.2	2.2	2.2	2.9	2.9	2.9	3.0	"
Robe B										
115cm*/**	4.4	4.4	4.4	4.5	4.5	4.5	4.5	4.5	4.5	m
150cm*/**	3.4	3.4	3.4	4.4	4.2	4.2	4.2	4.2	4.2	"

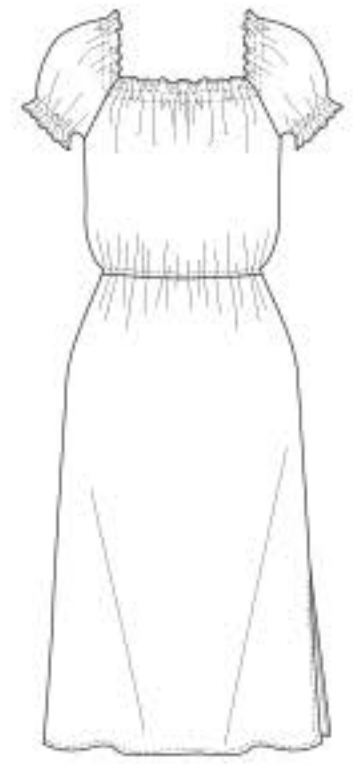
MESURES DU VÊTEMENT FINI

Longueur- dos: votre nuque à l'ourlet

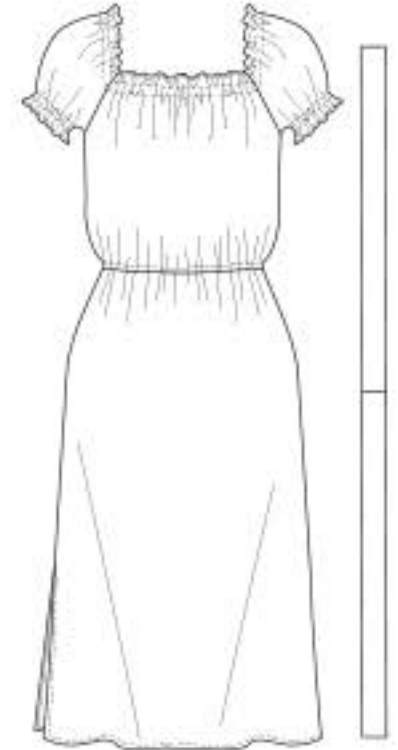
	8	10	12	14	16	18	20	22	24	cm
Robe A	115.5	116	116.5	117	117.5	118	118.5	119	120	
Robe B	134	135	135	136	136.5	137	138	138.5	139	"

*with nap **without nap

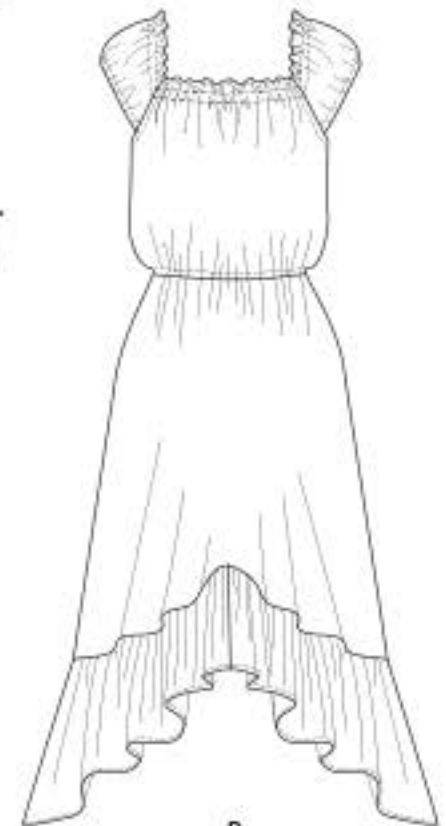
*avecsens **sans sens



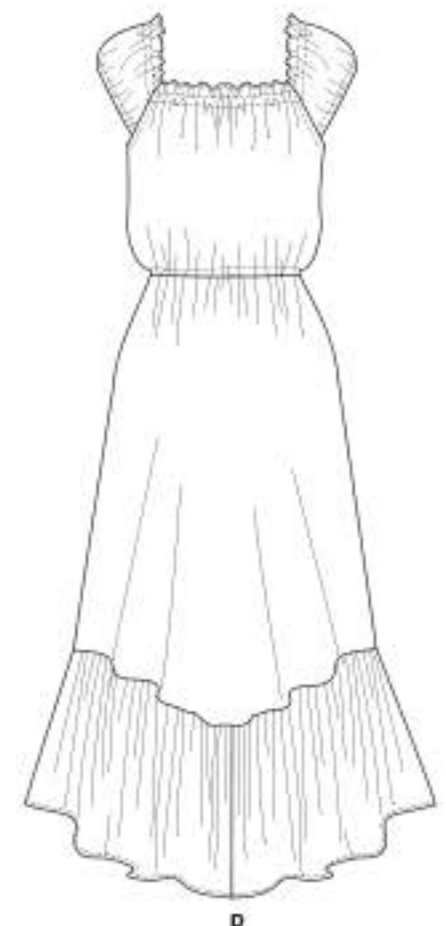
A



A



B



B