

B6764

9PIECES

Easy
Facile

MISSES' TOPS

Fabrics: Georgette, Crepe, Crepe de Chine, Challis. Unsuitable for obvious diagonals.

Notions: A: One Pkg. of 1/2" (1.3cm) Single-Fold Bias Tape. B: 3/4 yd. (0.7m) of 3/8" (1cm) Wide Ribbon. C: 2 3/4 yds. (2.6m) of 1/4" (0.6cm) Elastic. A, B: 1 1/2 yds. (1.4m) of 1/4" (0.6cm) Elastic. A, B, C: One 3/8" (1cm) Button.

Sizes	XS (4-6)	S (8-10)	M (12-14)	L (16-18)	XL (20-22)	XXL (24-26)	
Top A							
45"/**	1 3/8	1 1/2	1 1/2	1 3/4	1 7/8	1 7/8	Yd
60"/**	1 1/8	1 1/8	1 1/8	1 3/8	1 1/2	1 1/2	"
Top B							
45"/**	1 1/2	1 5/8	1 3/4	1 7/8	2 1/8	2 3/8	Yd
60"/**	1 3/8	1 3/8	1 3/8	1 1/2	1 1/2	1 3/4	"
Top C							
45"/**	2	2 1/4	2 3/8	2 3/4	2 7/8	3	Yd
60"/**	1 5/8	1 3/4	1 3/4	1 7/8	2	2 1/4	"

Fusible Interfacing A, B, C- 18, 20"- 1/2 yd.

FINISHED GARMENT MEASUREMENTS

B Width	58 1/4	60 1/4	63 3/4	67 3/4	71 3/4	75 3/4	In
Back length from base of neck:							
A	23	23 1/2	24	24 1/2	25	25 1/2	In
B, C	22	22 1/2	23	23 1/2	24	24 1/2	"

HAUTS POUR JEUNE FEMME

Tissus: Crêpe Georgette, Crêpe, Crêpe de Chine, Challis. Grandes diagonales ne conviennent pas.

Mercerie: A: 1 paquet de ruban de biais simple de 1.3cm. B: 0.7m de ruban de 1cm. C: 2.6m d'élastique de 0.6cm. A, B: 1.4m d'élastique de 0.6cm. A, B, C: 1 bouton de 1cm.

Tailles Françaises	TP 32-34	P 36-38	M 40-42	G 44-46	TG 48-50	TTG 52-54	
Haut A							
115cm/**	1.3	1.4	1.4	1.6	1.8	1.8	m
150cm/**	1.1	1.1	1.1	1.3	1.4	1.4	"
Haut B							
115cm/**	1.4	1.5	1.6	1.7	2.0	2.2	m
150cm/**	1.3	1.3	1.3	1.4	1.4	1.6	"
Haut C							
115cm/**	1.9	2.1	2.2	2.6	2.7	2.8	m
150cm/**	1.5	1.6	1.6	1.8	1.9	2.1	"

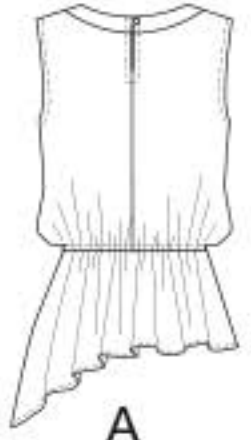
Entoilage Thermo collant A, B, C- 46,51cm- 0.5m.

MESURES DU VÊTEMENT FINI

B Largeur	147	152	162	172	182	192	cm
Longueur - dos, votre nuque à l'ourlet:							
A	58	60	61	62	64	65	cm
B, C	56	57	58	60	61	62	"

*with nap **without nap

*avec sens **sans sens



A



B



C