

# B6769

9 PIECES

Easy  
Facile

## MISSSES' TOP, TUNIC AND CAFTAN

Fabrics: Gauze, Georgette, Silk, Challis, Novelty Sheers. Unsuitable for obvious diagonals.

Notions: B: 2¼ yds. (2.1m) of ¼" (0.6cm)-¾" (1cm) Ribbon.

Sizes	S (8-10)	M (12-14)	L (16-18)	XL (20-22)	
-------	-------------	--------------	--------------	---------------	--

<b>A</b>					
45"/** - 1¾ yds.					
60"/**	1	1	1¾	1¾	Yd
Contrast A- 45, 60"/** - ½ yd.					
Fusible Interfacing A- 18, 20" - ⅝ yd.					

<b>B</b>					
45"/** - 2¾ yds.					
60"/**	2	2	2	2⅞	Yd

<b>C</b>					
45"/**	3½	3⅞	3⅞	3⅞	Yd
60"/**	3⅞	3⅞	3⅞	3½	"

Fusible Interfacing B,C- 18, 20" - ½ yd.

### FINISHED GARMENT MEASUREMENTS

<b>A Width</b>	48½	52	56	60	In
<b>B Width</b>	52	55½	59½	63½	"
<b>Back length from base of neck:</b>					
<b>A</b>	25	25½	26	26½	In
<b>B</b>	30	30½	31	31½	"
<b>C</b>	54	54½	55	55½	"

### HAUT, TUNIQUE ET CAFTAN POUR JEUNE FEMME

Tailles	P	M	G	TG	
Françaises	36-38	40-42	44-46	48-50	

Tissus: Gaze, Crêpe Georgette, Soie, Challis, Tissus Transparents. Grandes diagonales ne conviennent pas.

Mercreie: B: 2.1m de Rubande 0.6cm-1cm.

<b>A</b>					
115cm*/** - 1.6m.					
150cm*/**	1.0	1.0	1.6	1.6	m
Contraste A- 115, 150cm*/** - 0.5m.					
Entoilage Thermocollant A- 46, 51cm - 0.6m.					

<b>B</b>					
115cm*/** - 2.6m.					
150cm*/**	1.9	1.9	1.9	2.4	m

<b>C</b>					
115cm*/**	3.2	3.4	3.4	3.4	m
150cm*/**	3.1	3.1	3.1	3.2	"

Entoilage Thermocollant B,C- 46, 51cm - 0.5m.

### MESURES DU VÊTEMENT FINI

<b>A Largeur</b>	123	132	142	152	cm
<b>B Largeur</b>	132	141	151	159	"
<b>Longueur - dos, votre nuque à l'ourlet:</b>					
<b>A</b>	64	65	66	67	cm
<b>B</b>	76	77	79	80	"
<b>C</b>	137	138.5	140	141	"

\*with nap \*\*without nap

\*avec sens \*\*sans sens



A



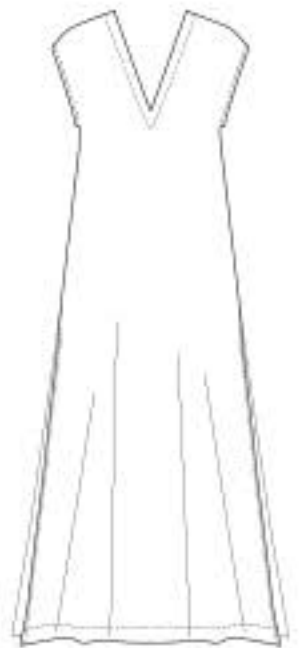
A



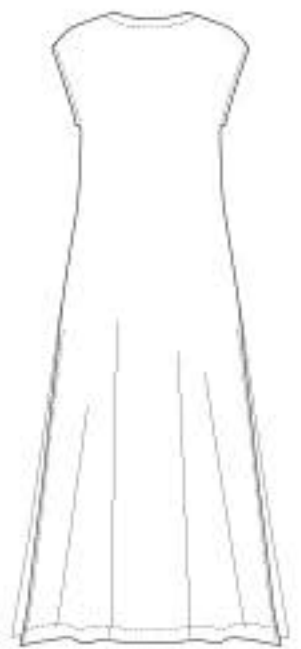
B



B



C



C