

B6771

20 PIECES

Average
Moins Facile

MISSES' SHIRT AND SHIRTDRESS

Fabrics: A,B, **Contrast 1A:** Cotton Blends, Linen, Lightweight Poplin, Chambray. **Contrast 2A:** Double Scallop Border Fabrics. Unsuitable for obvious diagonals.

Notions: A: Six 5/8" (1.5cm) Buttons. B: Eight 5/8" (1.5cm) Buttons, Embroidery Floss.

Sizes	6	8	10	12	14	16	18	20	22	24	
Shirt A											
45"/**	1 1/8	1 1/8	1 1/8	1 1/8	1 1/8	1 1/4	1 1/4	1 1/4	1 1/4	1 1/4	Yd
60"/**	1	1	1	1	1	1	1	1	1	1	"
Contrast 1A- 45,60"/** - 1 yd.											
Contrast 2A											
45"	1	1	1	1 1/8	1 1/8	1 1/8	1 1/8	1 1/8	1 1/8	1 1/8	Yd
60"	1	1	1	1 1/8	1 1/8	1 1/8	1 1/8	1 1/8	1 1/8	1 1/8	"
Fusible Interfacing A- 18,20"- 7/8 yd.											
Shirtdress B											
45"/**	2 5/8	2 5/8	2 5/8	2 5/8	2 3/4	3	3	3 1/8	3 1/4	3 1/4	Yd
60"/**	2	2	2 1/8	2 1/8	2 1/8	2 1/8	2 3/8	2 3/8	2 3/8	2 3/8	"
Fusible Interfacing B											
18,20"	1 1/8	1 1/8	1 1/8	1 1/8	1 1/8	1 1/8	1 1/8	1 1/4	1 1/4	1 1/4	Yd

FINISHED GARMENT MEASUREMENTS

Back length from base of neck:

	6	8	10	12	14	16	18	20	22	24	
A	35 1/2	35 3/4	36	36 1/4	36 1/2	36 3/4	37	37 1/4	37 1/2	37 3/4	In
B	25 1/2	25 3/4	26	26 1/4	26 1/2	26 3/4	27	27 1/4	27 1/2	27 3/4	"

CHEMISE ET ROBE CHEMISIER POUR JEUNE FEMME

Tissus: A, B, **Contraste 1A:** Cotonnades, Toile de lin, Popeline Légère, Chambray. **Contraste 2A:** Tissus à bordure à double feston. Grandes diagonales ne conviennent pas.

Mercre: A: 6 boutons de 1.5cm. B: 8 boutons de 1.5cm, fil à broder.

Tailles Françaises	6	8	10	12	14	16	18	20	22	24	
Chemise A											
115cm*/**	1.1	1.1	1.1	1.1	1.1	1.2	1.2	1.2	1.2	1.2	m
150cm*/**	1.0	1.0	1.0	1.0	1.0	1.0	1.0	1.0	1.0	1.0	"
Contraste 1A- 115,150cm*/** - 1.0m.											
Contraste 2A											
115cm*	1.0	1.0	1.0	1.1	1.1	1.1	1.1	1.1	1.1	1.1	m
150cm*	1.0	1.0	1.0	1.1	1.1	1.1	1.1	1.1	1.1	1.1	"
Entoilage The mocolant A- 46,51cm- 0.8m.											
Robe Chemisier B											
115cm*/**	2.4	2.4	2.4	2.4	2.6	2.8	2.8	2.9	3.0	3.0	m
150cm*/**	1.9	1.9	2.0	2.0	2.0	2.0	2.2	2.2	2.2	2.2	"
Entoilage The mocolant B											
46,51cm	1.1	1.1	1.1	1.1	1.1	1.1	1.1	1.2	1.2	1.2	m

MESURES DU VÊTEMENT FINI

Longueur- dos, votre nuque à l'ourlet

	6	8	10	12	14	16	18	20	22	24	
A	90	91	92	92.5	93	93.5	94	95	95	96	cm
B	65	65	66	67	67	67.5	68	68.5	69	70	"

*with nap **without nap

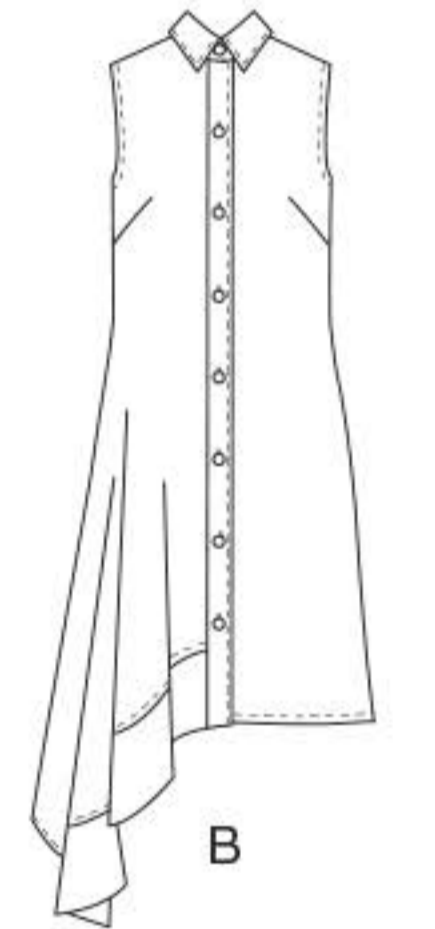
*avec sens **sans sens



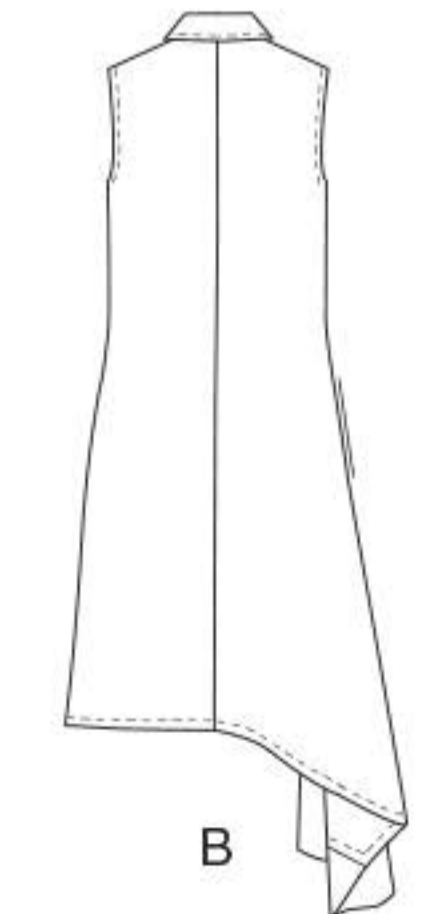
A



A



B



B