



## K156 Girls' Dresses

Little girls love to dress up and these cute dresses would be perfect for any party! They have self-lined bodices, gathered skirts, back zipper closures and coordinating ribbon trim. View A has long sleeves and View B is sleeveless.

These dresses are **designed for lightweight woven fabrics** such as cotton, cotton types, calico, linen.

### Standard Body Measurements

SIZES:	XXS(3)	XS(4-5)	S(6)	M(7-8)	L(10)
Height	38" (96 cm)	42" (107 cm)	46" (117 cm)	50" (127 cm)	55" (140 cm)
Chest	22" (56 cm)	23½" (60 cm)	25" (64 cm)	26½" (67 cm)	28½" (72 cm)
Waist	21" (53 cm)	22" (56 cm)	23" (58 cm)	24" (61 cm)	25" (64 cm)
Hip	22½" (57 cm)	24" (61 cm)	25½" (65 cm)	27½" (70 cm)	30" (76 cm)

### Materials needed:

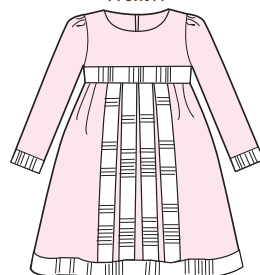
#### Dress A,B

SIZES:	XXS(3)	XS(4-5)	S(6)	M(7-8)	L(10)
<b>Fabric width 45" (115 cm)</b>					
Dress A	1⅜ yd (1.5 m)	1¾ yd (1.6 m)	1⅞ yd (1.8 m)	2 yd (1.9 m)	2½ yd (2.3 m)
Dress B	1⅞ yd (1.3 m)	1½ yd (1.4 m)	1⅞ yd (1.5 m)	1¾ yd (1.6 m)	2 yd (1.9 m)
<b>Fabric width 60" (152 cm)</b>					
Dress A	1⅞ yd (1.1 m)	1⅞ yd (1.1 m)	1⅞ yd (1.3 m)	1⅞ yd (1.5 m)	1⅞ yd (1.8 m)
Dress B	1⅞ yd (1.1 m)	1⅞ yd (1.1 m)	1¼ yd (1.2 m)	1⅞ yd (1.3 m)	1½ yd (1.4 m)

### Additional items you will need:

- ▶ **A,B:** 14" (36 cm) zipper for Sizes XXS-XS, 18" (46 cm) zipper for Sizes S-L.
- ▶ **A:** 2" (5 cm) wide ribbon;
  - 4½ yds (4.20 m) for Size XXS
  - 5½ yds (5.10 m) for Sizes XS-S
  - 6½ yds (6.00 m) for Sizes M-L
- ▶ **B:** 2" (5 cm) wide ribbon;
  - 2½ yds (2.30 m) for Size XXS-S
  - 3 yds (2.70 m) for Sizes M-L

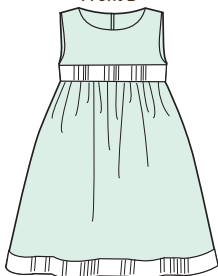
Front A



Back A



Front B



Back B

