



## K233 Girls' Romper, Jumpsuit and Sash

This cute romper and jumpsuit have bodice with stitched front band, shoulder straps, waist casing and top edge of back is finished with elastic. **Romper A** has gathered ruffle at band, shorts length and fabric sash. **Jumpsuit B** has shoulder straps with gathered ruffles, full length pants with elastic casings at hem. Ribbon bow attached at waist.

Romper and jumpsuit are designed for light to medium weight wovens such as cotton blends, broadcloth, gingham, seersucker.

### Body measurements:

SIZES:	XXS(3)	XS(4-5)	S(6)	M(7-8)	L(10)
Height	38" (96 cm)	42" (107 cm)	46" (117 cm)	50" (127 cm)	55" (140 cm)
Chest	22" (56 cm)	23½" (60 cm)	25" (64 cm)	26½" (67 cm)	28½" (72 cm)
Waist	21" (53 cm)	22" (56 cm)	23" (58 cm)	24" (61 cm)	25" (64 cm)
Hip	22½" (57 cm)	24" (61 cm)	25½" (65 cm)	27½" (70 cm)	30" (76 cm)

### Materials needed:

SIZES:	XXS(3)	XS(4-5)	S(6)	M(7-8)	L(10)
<b>FABRIC 45" (115 cm) WIDE</b>					
<b>Romper and Sash A</b>					
	1⅞ (1.1)	1¼ (1.2)	1¼ (1.2)	1¼ (1.2)	1¼ (1.2) yd (m)
<b>Jumpsuit B</b>	1⅜ (1.3)	1⅜ (1.3)	1½ (1.4)	1½ (1.4)	1⅝ (1.5) yd (m)
<b>FABRIC 60" (152 cm) WIDE</b>					
<b>Romper and Sash A</b>					
	7/8 (0.8)	7/8 (0.8)	7/8 (0.8)	7/8 (0.8)	1 (1.0) yd (m)
<b>Jumpsuit B</b>	1¼ (1.2)	1¼ (1.2)	1¼ (1.2)	1⅜ (1.3)	1⅜ (1.3) yd (m)
<b>FUSIBLE INTERFACING 18", 20" (46, 51 cm) WIDE</b>					
<b>Fusible Interfacing A, B</b> - ¼ yd (0.3 m)					

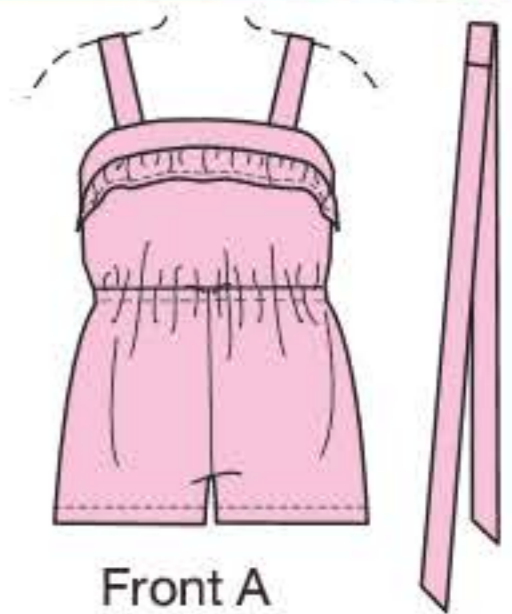
### Additional items you will need:

#### A:

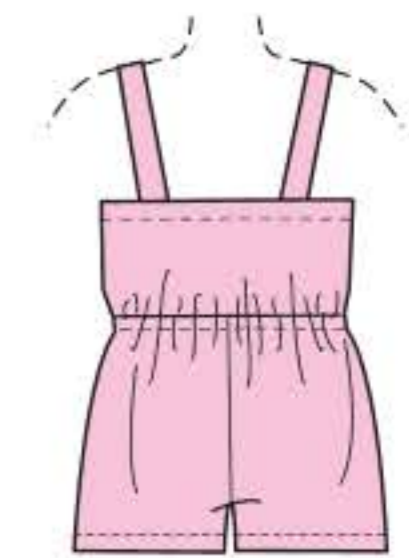
- ½ yd (0.5 m) of ¾" (2 cm) wide elastic.
- ¾ yd (0.7 m) of ½" (1.3 cm) wide elastic.

#### B:

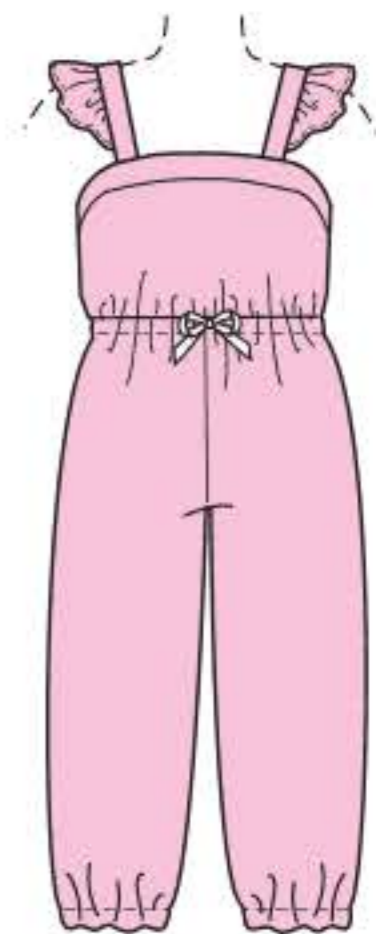
- ½ yd (0.5 m) of ¾" (2 cm) wide elastic.
- ¾ yd (0.7 m) of ½" (1.3 cm) wide elastic.
- ¾ yd (0.7 m) of ¾" (2 cm) wide elastic.
- ⅝ yd (0.6 m) of ⅝" (1.5 cm) wide ribbon.



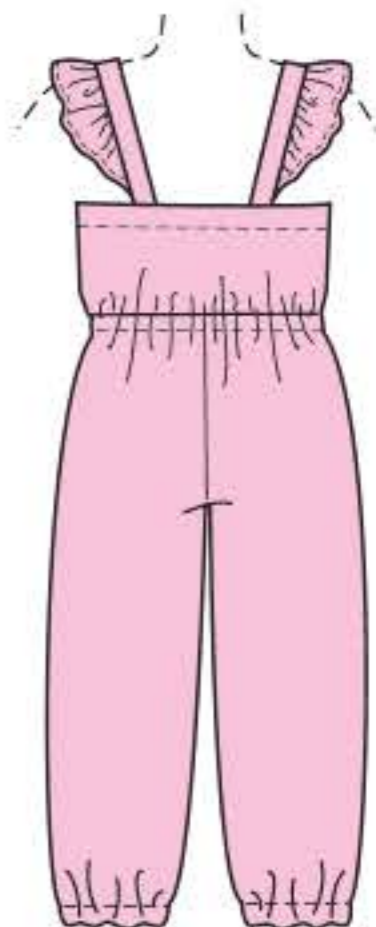
Front A



Back A



Front B



Back B