



Baby rompers, jumpsuits, cap and booties. Rompers have bottom edge and necklines finished with self fabric binding and have snap closure at crotch. View A overlaps at shoulders and has short sleeves. View B has long sleeves, round neckline, slit at center back and optional eyelet trim on neckline. Jumpsuits have long sleeves, snap closures on front and inside legs, and neckline is finished with self fabric binding; View C has feet. View D has ribbing cuffs. Cap has fold-up cuff. Booties have ribbing cuffs.



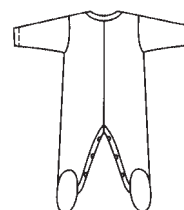
VIEW A Back



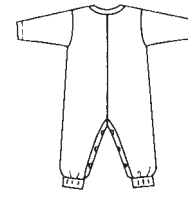
VIEW B Back



VIEW C Back



VIEW D Back



BOOTIES



CAP



KWIK•SEW®

price **2433**

DESIGNED FOR STRETCH KNITS ONLY WITH 25% STRETCH
Suggested Fabrics: Interlock, stretch terry, velour

**BABY ROMPERS, JUMPSUITS,
CAP & BOOTIES**

Sizes: XS-S-M-L-XL
Hat Sizes: XS-S-M-L

Size	XS	S	M	L	XL	
Head Circumference	13 1/2 (34)	15 (38)	16 1/2 (42)	18 (46)	—	" (cm)
Material Required: Fabric requirement allows for nap, one-way design or shading. Extra fabric may be needed to match design or for shrinkage.						
Fabric 60" (152 cm) Wide						
View A	1/2 (0.50)	5/8 (0.60)	5/8 (0.60)	5/8 (0.60)	5/8 (0.60)	yd (m)
View B	1/2 (0.50)	5/8 (0.60)	5/8 (0.60)	5/8 (0.60)	5/8 (0.60)	yd (m)
View C Jumpsuit & Cap	3/4 (0.70)	7/8 (0.80)	7/8 (0.80)	7/8 (0.80)	1 (0.95)	yd (m)
View D Jumpsuit, Cap & Booties	7/8 (0.80)	7/8 (0.80)	7/8 (0.80)	1 (0.95)	1 (0.95)	yd (m)
Cap 40" (102 cm) Wide (minimum width)	1/4 (0.25)	1/4 (0.25)	1/4 (0.25)	1/4 (0.25)	1/4 (0.25)	yd (m)
Booties 22" (56 cm) Wide (minimum width)	1/4 (0.25)	1/4 (0.25)	1/4 (0.25)	1/4 (0.25)	1/4 (0.25)	yd (m)
Ribbing 14" (36 cm) Wide						
View D	4 (10)	4 (10)	4 (10)	4 (10)	4 (10)	" (cm)
Booties	4 (10)	4 (10)	4 (10)	4 (10)	4 (10)	" (cm)
Fusible Interfacing 22" (56cm) Wide						
View C & D	1/8 (0.15)	1/8 (0.15)	1/8 (0.15)	1/8 (0.15)	1/8 (0.15)	yd (m)

Notions: Thread. VIEW A: Three baby snaps, one purchased applique (optional).
VIEW B: Four baby snaps, 3/4 yd (0.70m) of 1"-1 1/2" (2.5cm - 4cm) wide eyelet.
VIEW C: Ten baby snaps for sizes XS-S; twelve baby snaps for sizes M-XL.
VIEW D: Eight baby snaps for size XS; ten baby snaps for sizes S-M; Twelve baby snaps for sizes L-XL.