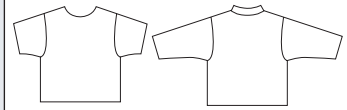




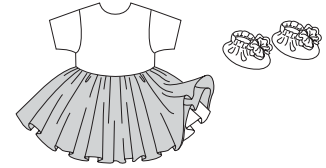
SHIRT

Shirt has short or full length sleeves, Velcro® closure on back, and neckline can be hemmed or have collar. Designed for light to medium weight stretch knits, such as single knit, interlock, textured knits.



BALLERINA DRESS & SLIPPERS

Dress has hemmed neckline, gathered skirt with two layer overskirt and Velcro® closure on back. Bodice designed for light to medium weight stretch knits. Underskirt in lightweight woven fabrics. Overskirt in tulle and sheer fabrics. Slippers are lined and have pom-poms from the tulle and elastic at outer edge.



PANTIES

One-piece panties have side seams, leg openings and waist finished with stretch lace. Designed for lightweight stretch knits.



JUMPER

A-line jumper has patch pockets and Velcro® closures on shoulders. Designed for light to medium weight stretch knit or woven fabrics.



KWIK•SEW®

2830 price

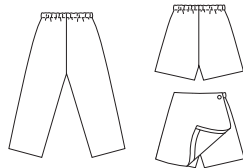
DOLL CLOTHES

Fits 18" (45 cm) Dolls

FOR MATERIAL REQUIRED, SEE INSTRUCTIONS

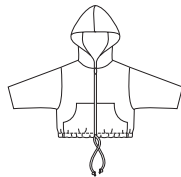
PANTS, SHORTS & SKORT

Pants and shorts have stitched elastic waist and optional trim on outside legs. Skort has stitched elastic on back waist and front panel overlay. Designed for light to medium weight knit or woven fabrics.



JACKET VIEW A

Cropped jacket has patch pockets, zipper front, drawstring at bottom edge, lined hood and optional trim on sleeves. Designed for medium weight stretch knit or woven fabrics, such as Polarfleece®, sweatshirt fleece, cotton, cotton types, windbreaker fabrics.



JACKET VIEW B

Jacket has pocket flaps with snaps or buttons, zipper front, stitched elastic at waist, lined hood with optional fake fur trim. Designed for same fabrics as Jacket View A.



BERET

Beret has ribbing band and pom-pom. Designed for stretch knits and woven fabrics.



NIGHTGOWN

Nightgown is gathered to front and back yokes and has ribbing neckband, puff sleeves with ribbing cuffs and Velcro® closure on back. Designed for light to medium weight knit or woven fabrics.



ROBE

Wrap robe has shawl collar, pockets, tie belt, and fold-up cuffs. All outside edges are finished with serger, zigzag or decorative stitches. Wrong side of fabric will show. Designed for light to medium weight stretch knits or soft woven fabrics such as Polarfleece®, flannel, seersucker.



HAIR WRAP

Hair wrap has elastic. Designed for lightweight knit or woven fabrics.

