



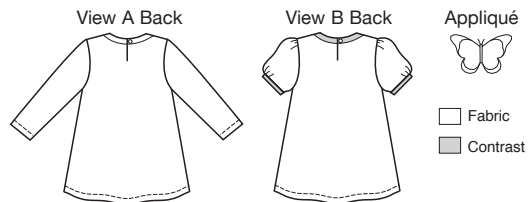
price **3861**

GIRLS' BUTTERFLY TOPS
XS (4-5) - S (6) - M (7-8) -
L (10) - XL (12-14)

Designed for stretch knits only with 25% stretch across the grain.
Suggested Fabrics: Interlock, textured knits, jersey.
Contrast in lightweight wovens such as cotton, cotton types.



Pull-over tops have round neckline finished with binding, front empire waist with skirt gathered to bodice, and center back slit opening with button and loop closure. View A has full length sleeves and self fabric neck binding. View B has short gathered sleeves with contrast bias cut bindings at neckline and sleeves. Optional butterfly appliqué included. Pattern includes 1/4" (6 mm) seam allowances.



Size	XS	S	M	L	XL	
Finished Length at Center Back						
View A & B	18 1/2 (47)	20 (53)	21 3/4 (55)	23 3/4 (60)	25 1/2 (65)	" (cm)
Material Required: Fabric requirement allows for nap, one-way design or shading. Extra fabric may be needed to match design or for shrinkage.						
Fabric 60" (152 cm) Wide						
View A	3/4 (0.70)	7/8 (0.80)	1 (0.95)	1 1/4 (1.15)	1 1/4 (1.15)	yd (m)
View B	3/4 (0.70)	3/4 (0.70)	7/8 (0.80)	1 (0.95)	1 1/8 (1.05)	yd (m)

Contrast
View B 17" x 17" (43 cm x 43 cm) Piece — All Sizes
Notions: Thread, one 3/8" (10 mm) button, 1/2 yd (0.50 m) of 3/8" (1 cm) wide clear elastic, 3" x 14" (8 cm x 35 cm) piece of lightweight non-fusible interfacing, scrap piece of fusible interfacing. **For Appliqué:** Scrap pieces of fabrics, paper backed fusible web and tear-away materials. As desired — sequins, beads, etc. for embellishment.