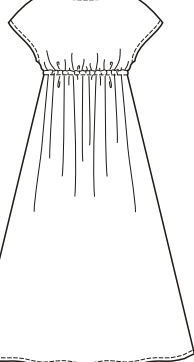
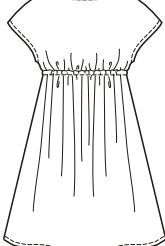




View A Back



View B Back



price



**3868**

**WOMEN'S DRESSES**

1X-2X-3X-4X

**Designed for soft woven and knit fabrics.**

Suggested Fabrics: Cotton, challis, georgette, gauze, silk, silk-like fabrics, lawn, jersey.

A-line pull-over dresses with empire waist have deep V-neckline, extended shoulders forming cap sleeves, elastic in casing under bust, and neckline and armholes are finished with narrow hems. Pattern includes 1/4" (6 mm) seam allowances.

Size	1X	2X	3X	4X	
<b>Finished Length from Natural Waist</b>		<b>View A</b> 38" (96 cm) — All Sizes	<b>View B</b> 24" (61 cm) — All Sizes		
<b>Material Required:</b> Fabric requirement allows for nap, one-way design or shading. Extra fabric may be needed to match design or for shrinkage.					
<b>Fabric 58" (148 cm) Wide</b>					
View A	3 5/8 (3.35)	3 5/8 (3.35)	3 5/8 (3.35)	3 5/8 (3.35)	yd (m)
View B	2 3/4 (2.55)	2 3/4 (2.55)	2 3/4 (2.55)	2 3/4 (2.55)	yd (m)
<b>Fabric 44" (112 cm) Wide</b>					
View A	<b>Not Suitable</b>				yd (m)
View B	2 3/4 (2.55)	2 7/8 (2.65)	2 7/8 (2.65)	<b>Not Suitable</b>	yd (m)
<b>Fusible Interfacing 22" (56 cm) Wide</b>					
View A & B	5/8 (0.60)	5/8 (0.60)	5/8 (0.60)	5/8 (0.60)	yd (m)
<b>Notions:</b> Thread, 1 1/2 yd (1.40 m) of 1/4" (6 mm) wide elastic.					

PLUS SIZE