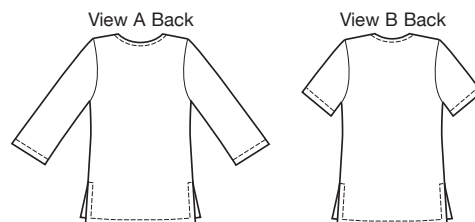




price **3870** MISSES' TUNICS
XS-S-M-L-XL

Designed for lightweight woven fabrics.
Suggested Fabrics: Cotton, cotton types, lawn, batiste, chambray, challis, calico.

Pull-over tunics have side hemline slits. View A has boat neckline finished with bias cut binding, and three-quarter length sleeves. View B has round neckline with center front slit finished with facing, and short sleeves. Pattern includes 5/8" (1.5 cm) seam allowances.



Size	XS	S	M	L	XL	
Finished Length at Center Back from Natural Neckline						
View A & B	28 1/2 (72)	29 1/2 (75)	30 1/2 (77)	31 1/2 (80)	32 1/2 (83)	" (cm)
Material Required: Fabric requirement allows for nap, one-way design or shading. Extra fabric may be needed to match design or for shrinkage.						
Fabric 58" (148 cm) Wide						
View A	1 5/8 (1.50)	1 5/8 (1.50)	1 3/4 (1.60)	1 3/4 (1.60)	1 7/8 (1.75)	yd (m)
View B	1 1/4 (1.15)	1 3/8 (1.30)	1 3/8 (1.30)	1 1/2 (1.40)	1 1/2 (1.40)	yd (m)
Fabric 44" (112 cm) Wide						
View A	1 7/8 (1.75)	1 7/8 (1.75)	2 (1.85)	3 (2.75)	3 1/4 (3.00)	yd (m)
View B	1 7/8 (1.75)	1 7/8 (1.75)	2 (1.85)	2 3/8 (2.20)	2 1/2 (2.20)	yd (m)
Fusible Interfacing 22" (56 cm) Wide						
View B	1/2 (0.50)	1/2 (0.50)	1/2 (0.50)	1/2 (0.50)	1/2 (0.50)	yd (m)
Notions: Thread.						