



# 3887

## GIRLS' UNITARD

Sizes: XS(4-5) - S(6) - M(7-8) - L(10) - XL(12-14)

**DESIGNED FOR TWO-WAY STRETCH FABRIC WITH 75% STRETCH.**

Suggested Fabrics: Fabric with Spandex Lycra®, nylon Lycra®, cotton Lycra®, swimwear fabric, stretch velvet.

**FABRIC 44" (112 cm) WIDE or 58" (148 cm) WIDE**  
with Greatest Degree of Stretch on **Crosswise Grain**

**FABRIC 44" (112 cm) WIDE or 58" (148 cm) WIDE**  
with Greatest Degree of Stretch on **Lengthwise Grain**

SIZE	XS	S	M	L	XL	
A: Fabric	7/8 0.80	7/8 0.80	1 0.95	1 1/8 1.05	1 1/4 1.15	yd m
A: Contrast I	5/8 0.60	5/8 0.60	5/8 0.60	5/8 0.60	3/4 0.70	yd m
A: Contrast II	1/8 0.15	1/8 0.15	1/8 0.15	1/8 0.15	1/8 0.15	yd m
B: Fabric	1/2 0.50	5/8 0.60	5/8 0.60	3/4 0.70	3/4 0.70	yd m
B: Contrast	3/8 0.35	3/8 0.35	3/8 0.35	3/8 0.35	3/8 0.35	yd m

SIZE	XS	S	M	L	XL	
A: Fabric	1 0.95	1 0.95	1 1/8 1.05	1 1/8 1.05	1 1/4 1.15	yd m
A: Contrast I	3/4 0.70	3/4 0.70	3/4 0.70	7/8 0.80	7/8 0.80	yd m
A: Contrast II	5/8 0.60	5/8 0.60	5/8 0.60	3/4 0.70	3/4 0.70	yd m
B: Contrast	3/8 0.35	3/8 0.35	3/8 0.35	3/8 0.35	1/2 0.50	yd m

**FABRIC 58" (148 cm) WIDE**  
with Greatest Degree of Stretch on **Lengthwise Grain**

**FABRIC 44" (112 cm) WIDE**  
with Greatest Degree of Stretch on **Lengthwise Grain**

B: Fabric	1/2 0.50	1/2 0.50	5/8 0.60	5/8 0.60	5/8 0.60	yd m
-----------	-------------	-------------	-------------	-------------	-------------	---------

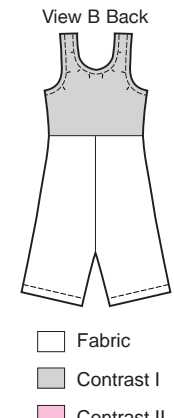
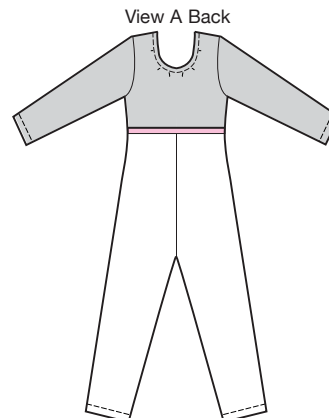
B: Fabric	1/2 0.50	1/2 0.50	5/8 0.60	1 1/8 1.05	1 1/4 1.15	yd m
-----------	-------------	-------------	-------------	---------------	---------------	---------

**INSIDE LEG TO FLOOR**

	17 43	19 1/4 49	21 1/2 54	24 61	27 68	in cm
--	----------	--------------	--------------	----------	----------	----------

**NOTIONS:** Thread.  
**View A:** 7/8 yd (0.80 m) of 3/8" (1 cm) wide elastic.  
**View B:** 1 5/8 yd (1.50 m) of 3/8" (1 cm) wide elastic.

Very close fitting unitards have scoop neckline finished with elastic, empire waist, and bodice from contrast fabric. View A has full length sleeves, ankle length pants, and trim in waist seam from a second contrast fabric. View B armholes are finished with elastic, and pants are above knee length. Pattern includes 1/4" (6 mm) seam allowances.



- Fabric
- Contrast I
- Contrast II