

U.S. \$19.95 CAN. \$19.95 ● YELLOW L

B6416

VERY EASY/TRÈS FACILE

MISSES' TUNIC: Loose-fitting, pullover tunic has front and back yoke extending into sleeves, front button and loop closure, sleeve and neckline variations. **B:** Contrast band. **C:** Contrast yoke and sleeves.

Combinations: **A5(6-8-10-12-14), E5(14-16-18-20-22)**

FABRICS: Crepe, Crepe de Chine, Linen, Challis.

Unsuitable for obvious diagonals.

*With Nap. **Without Nap.

SIZES	6	8	10	12	14	16	18	20	22
A 45"/**	1¾	1¾	1¾	1¾	1⅞	2⅞	2⅞	2⅞	2¾
60"/**	1¾	1¾	1½	1½	1½	1⅝	1⅝	1⅝	1¾
B 45"/**	2½	2½	2⅝	2⅝	2¾	2¾	2⅞	2⅞	3
60"/**	1⅝	1⅝	1⅝	1¾	1¾	1¾	1⅞	1⅞	1⅞

CONTRAST B - 45", 60"/** - ¾ yd.

FUSIBLE INTERFACING A, B - 18", 20" - ¾ yd.

C	45"/**	1½	1½	1⅝	1⅝	1⅝	1⅝	1⅝	1⅝
60"/**	¾	¾	¾	¾	¾	¾	1⅜	1⅜	1⅜

CONTRAST C

45"/**	1½	1½	1½	1⅝	1⅝	1¾	1¾	1¾	1⅞
60"/**	1¼	1¼	1¼	1¼	1¼	1¼	1¼	1¼	1¼

FUSIBLE INTERFACING C - 18", 20" - ⅝ yd.

D	45"/**	2¼	2⅞	2⅞	3	3	3⅞	3⅞	3¼
60"/**	1⅝	1⅝	1⅝	1¾	1¾	2	2	2	2⅞

FUSIBLE INTERFACING D - 18", 20" - ⅞ yd.

NOTIONS: One ½" Button.

FINISHED GARMENT MEASUREMENTS

Width, lower edge

A, B, C, D 40 41 42 43½ 45½ 47½ 49½ 51½ 53½

Back length from base of neck

A, B, C, D 28½ 28¾ 29 29¼ 29½ 29¾ 30 30¼ 30½

TUNIQUE (J. FEMME): Tunique ample, à passer par la tête, à empiècement devant et devant formant les manches, fermeture à bouton et bride devant, variations de manche et d'encolure. **B:** Bande contrastante. **C:** Empiècement et manches contrastants.

Séries: **A5(6-8-10-12-14), E5(14-16-18-20-22)**

TISSUS: Crêpe, Crêpe de Chine, Toile de lin, Etamine.

Grandes diagonales ne conviennent pas.

*Avec Sens. **Sans Sens.

TAILLES	6	8	10	12	14	16	18	20	22
A 115cm*/**	1.60	1.60	1.60	1.60	1.80	2.00	2.00	2.00	2.20
150cm*/**	1.30	1.30	1.40	1.40	1.40	1.50	1.50	1.50	1.60
B 115cm*/**	2.30	2.30	2.40	2.40	2.60	2.60	2.70	2.70	2.80
150cm*/**	1.50	1.50	1.50	1.60	1.60	1.60	1.80	1.80	1.80

CONTRASTE B - 115, 150cm*/** - 0.40m

ENTOILAGE THERMOCOLLANT A, B - 46, 51cm - 0.40m

C	115cm*/**	1.10	1.40	1.50	1.50	1.50	1.50	1.50	1.50
150cm*/**	0.80	0.80	0.80	0.80	0.80	0.80	1.30	1.30	1.30

CONTRASTE C

115cm*/**	1.40	1.40	1.40	1.50	1.50	1.60	1.60	1.60	1.80
150cm*/**	1.20	1.20	1.20	1.20	1.20	1.20	1.20	1.20	1.20

ENTOILAGE THERMOCOLLANT C - 46, 51cm - 0.60m

D	115cm*/**	2.10	2.70	2.70	2.70	2.80	2.80	2.90	2.90
150cm*/**	1.50	1.50	1.50	1.60	1.60	1.90	1.90	1.90	2.00

ENTOILAGE THERMOCOLLANT D - 46, 51cm - 0.80m

MERCERIE: 1 Bouton de 13mm.

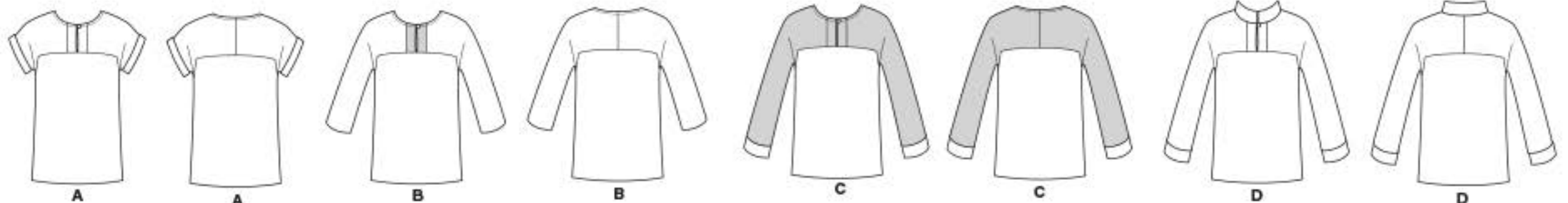
MESURES DU VÊTEMENT FINI

Largeur à l'ourlet

A, B, C, D 102 104 107 110 116 121 126 131 136

Longueur - dos, votre nuque à l'ourlet

A, B, C, D 72 73 74 74 75 76 76 77 78



BUTTERICK PATTERN, 120 BROADWAY, NEW YORK 10271 © 2016 The McCall Pattern Co. • www.butterick.com

• PRINTED IN U.S.A. ALL RIGHTS RESERVED. SOLD FOR INDIVIDUAL HOME USE ONLY AND NOT FOR COMMERCIAL OR MANUFACTURING

PURPOSE RESERVE À UN USAGE PERSONNEL.

