

B6480

EASY/FACILE

MISSES' DRESS: Fitted dresses have neckline and sleeve variations.

Combinations: **A5**(6-8-10-12-14), **E5**(14-16-18-20-22)

FABRICS: Crepe, Linen, Sateen, Gabardine, Cotton Blends, Wool Blends.

Unsuitable for obvious diagonals.

*With Nap. **Without Nap.

SIZES	6	8	10	12	14	16	18	20	22
A 45"/**	1 7/8	1 7/8	1 7/8	1 7/8	2 1/4	2 1/4	2 1/4	2 1/4	2 3/4
60"/**	1 1/2	1 1/2	1 1/2	1 1/2	1 7/8	1 7/8	1 7/8	1 7/8	1 7/8

FUSIBLE INTERFACING A - 18", 20" - 1/2 yd.

B 45"/**	1 7/8	1 7/8	1 7/8	2 1/8	2 1/8	2 1/8	2 1/8	2 3/8	2 1/2
60"/**	1 1/2	1 1/2	1 1/2	1 3/4	1 3/4	1 3/4	1 3/4	1 3/4	1 3/4

C 45"/**	2 1/4	2 1/4	2 1/4	2 1/4	2 1/2	2 1/2	2 5/8	2 5/8	2 5/8
60"/**	1 1/8	1 1/8	1 1/8	2	2	2	2	2	2

FUSIBLE INTERFACING B, C - 18", 20" - 3/8 yd.

NOTIONS: One 22" Zipper, Hook and Eye.

FINISHED GARMENT MEASUREMENTS

Width, lower edge

A, B, C	44	45	46	47 1/2	49 1/2	51 1/2	53 1/2	55 1/2	57 1/2
---------	----	----	----	--------	--------	--------	--------	--------	--------

Back length from base of neck

A, B, C	38	38 1/4	38 1/2	38 3/4	39	39 1/4	39 1/2	39 3/4	40
---------	----	--------	--------	--------	----	--------	--------	--------	----

ROBE (J. FEMME): Robes ajustées à variations d'encolure et de manche.

Séries: **A5**(6-8-10-12-14), **E5**(14-16-18-20-22)

TISSUS: Crêpe, Toile de lin, Satinette, Gabardine, Cotonnade, Lainage.

Grandes diagonales ne conviennent pas.

*Avec Sens. **Sans Sens.

TAILLES	6	8	10	12	14	16	18	20	22
A 115cm/**	1.80	1.80	1.80	1.80	2.10	2.10	2.10	2.10	2.20
150cm/**	1.40	1.40	1.40	1.40	1.80	1.80	1.80	1.80	1.80

ENTOILAGE THERMOCOLLANT A - 46, 51cm - 0.50m

B 115cm/**	1.80	1.80	1.80	2.00	2.00	2.00	2.10	2.20	2.30
150cm/**	1.40	1.40	1.40	1.60	1.60	1.60	1.60	1.60	1.60

C 115cm/**	2.10	2.10	2.10	2.10	2.30	2.30	2.40	2.40	2.40
150cm/**	1.50	1.50	1.50	1.90	1.90	1.90	1.90	1.90	1.90

ENTOILAGE THERMOCOLLANT B, C - 46, 51cm - 0.40m

MERCERIE: 1 Fermeture à glissière de 55cm, Aagrafe.

MESURES DU VÊTEMENT FINI

Largeur à l'ourlet

A, B, C	112	115	117	121	126	131	136	141	146
---------	-----	-----	-----	-----	-----	-----	-----	-----	-----

Longueur - dos, votre nuque à l'ourlet

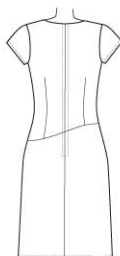
A, B, C	97	97	98	99	99	100	100	101	102
---------	----	----	----	----	----	-----	-----	-----	-----



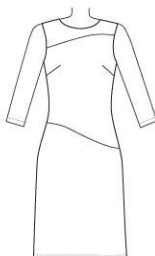
A



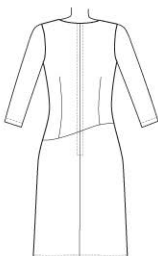
B



A-B



C



C

