

U.S. \$19.95 CAN. \$19.95 ● YELLOW L

B6602

EASY/FACILE

MISSES'/MISSE S' PETITE JACKET: Semi-fitted, lined jackets have open front and sleeve and hem variations. **B:** Frog closure. **C:** Decorative buttons and hook and eye closure.

Combinations: **A5(6-8-10-12-14), E5(14-16-18-20-22)**

FABRICS: Cotton Blends, Gabardine, Crepe, Velveteen, Wool. **Contrast D:** also Georgette, Charmeuse, Lace. **Lining:** Lining Fabrics.

Unsuitable for obvious diagonals.

*With Nap. **Without Nap.

SIZES	6	8	10	12	14	16	18	20	22
A 45"/**	2 ⁵ / ₈	2 ⁵ / ₈	2 ⁵ / ₈	2 ⁵ / ₈	2 ³ / ₄	2 ³ / ₄	2 ⁷ / ₈	2 ⁷ / ₈	3
60"/**	2 ¹ / ₈	2 ¹ / ₈	2 ¹ / ₈	2 ¹ / ₈	2 ¹ / ₈	2 ¹ / ₈	2 ¹ / ₈	2 ¹ / ₈	2 ¹ / ₈

FUSIBLE INTERFACING A - 18", 20" - 1¹/₈ yds.

B 45"/**	2 ¹ / ₂	2 ¹ / ₂	2 ⁵ / ₈	2 ⁵ / ₈	2 ⁵ / ₈	2 ⁵ / ₈	2 ⁵ / ₈	2 ³ / ₄	3
60"/**	2	2	2	2	2	2	2	2	2

CONTRAST B - 45", 60"/ - 1/2 yd.**

FUSIBLE INTERFACING B - 18", 20" - 2 yds.

LINING A, B

45"	1 ³ / ₄	1 ⁷ / ₈	2	2 ¹ / ₈	2 ¹ / ₈	2 ¹ / ₄	2 ¹ / ₄	2 ³ / ₈	2 ³ / ₈
C 45"/**	2 ³ / ₄	2 ³ / ₄	2 ³ / ₄	2 ⁷ / ₈	2 ⁷ / ₈	3	3 ¹ / ₈	3 ¹ / ₄	3 ³ / ₈
60"/**	2	2	2	2	2 ¹ / ₄	2 ¹ / ₄	2 ¹ / ₄	2 ¹ / ₄	2 ¹ / ₄

LINING C

45"	2	2	2 ¹ / ₈	2 ¹ / ₄	2 ¹ / ₂	2 ¹ / ₂	2 ¹ / ₂	2 ⁵ / ₈	2 ⁵ / ₈
D 45"/**	3 ¹ / ₈	3 ¹ / ₈	3 ¹ / ₈	3 ¹ / ₈	3 ¹ / ₈	3 ³ / ₈	3 ¹ / ₂	3 ³ / ₄	3 ³ / ₄
60"/**	2 ¹ / ₄	2 ¹ / ₄	2 ¹ / ₄	2 ³ / ₈	2 ³ / ₈	2 ³ / ₈	2 ³ / ₈	2 ¹ / ₂	2 ¹ / ₂

CONTRAST D

45"/**	1 ³ / ₈	1 ³ / ₈	1 ³ / ₈	1 ³ / ₈	1 ³ / ₈	1 ³ / ₈	1 ³ / ₈	1 ³ / ₈	1 ³ / ₈
60"/**	7/8	7/8	7/8	7/8	7/8	7/8	7/8	1	1

LINING D

45"	1 ³ / ₄	1 ⁷ / ₈	2	2 ¹ / ₈	2 ¹ / ₈	2 ¹ / ₄	2 ¹ / ₄	2 ³ / ₈	2 ³ / ₈
-----	-------------------------------	-------------------------------	---	-------------------------------	-------------------------------	-------------------------------	-------------------------------	-------------------------------	-------------------------------

FUSIBLE INTERFACING C, D - 18", 20" - 1¹/₄ yds.

NOTIONS: **A:** 2 yds. of Corded Piping. **B:** One Frog Closure. **C:** Two 3/4" - 1" Buttons, One Coat Hook and Eye, 1 1/2 yds. of 3/8" - 5/8" Ribbon, 1 yd. of 1" - 1 1/4" Ribbon.

FINISHED GARMENT MEASUREMENTS

Back length from base of neck

A, B	27 ¹ / ₂	27 ³ / ₄	28	28 ¹ / ₄	28 ¹ / ₂	28 ³ / ₄	29	29 ¹ / ₄	29 ¹ / ₂
C, D	31 ¹ / ₂	31 ³ / ₄	32	32 ¹ / ₄	32 ¹ / ₂	32 ³ / ₄	33	33 ¹ / ₄	33 ¹ / ₂

VESTE (J. FEMME/PETITE J. FEMME): Vestes semi-ajustées, doublées, à devant ouvert et variations de manche et d'ourlet. **B:** Brandebourg. **C:** Fermeture à boutons décoratifs et agrafe.

Séries: **A5(6-8-10-12-14), E5(14-16-18-20-22)**

TISSUS: Cotonnade, Gabardine, Crêpe, Velours de coton, Laine. **Contraste D:** en plus Crêpe georgette, Charmeuse, Dentelle. **Do ublure:** Tissus à doublure.

Grandes diagonales ne conviennent pas.

*Avec Sens. **Sans Sens.

TAILLES	6	8	10	12	14	16	18	20	22
A 115cm*/**	2.40	2.40	2.40	2.40	2.60	2.60	2.70	2.70	2.80
150cm*/**	2.00	2.00	2.00	2.00	2.00	2.00	2.00	2.00	2.00

ENTOILAGE THERMOCOLLANT A - 46, 51 - 1.10.

B 115cm*/**	2.30	2.30	2.40	2.40	2.40	2.40	2.40	2.60	2.80
150cm*/**	1.90	1.90	1.90	1.90	1.90	1.90	1.90	1.90	1.90

CONTRASTE B - 115, 150cm*/ - 0.5m**

ENTOILAGE THERMOCOLLANT B - 46, 51cm - 1.9m

DOUBLURE A, B

115cm	1.60	1.80	1.90	2.00	2.00	2.10	2.10	2.20	2.20
C 115cm*/**	2.60	2.60	2.60	2.70	2.70	2.80	2.90	3.00	3.10
150cm*/**	1.90	1.90	1.90	1.90	2.10	2.10	2.10	2.10	2.10

DOUBLURE C

115cm	1.90	1.90	2.00	2.10	2.30	2.30	2.30	2.40	2.40
D 115cm*/**	2.90	2.90	2.90	2.90	2.90	3.10	3.20	3.50	3.50
150cm*/**	2.10	2.10	2.10	2.20	2.20	2.20	2.20	2.30	2.30

CONTRASTE D

115cm*/**	1.30	1.30	1.30	1.30	1.30	1.30	1.30	1.30	1.30
150cm*/**	0.80	0.80	0.80	0.80	0.80	0.80	0.80	1.00	1.00

DOUBLURE D

115cm	1.60	1.80	1.90	2.00	2.00	2.10	2.10	2.20	2.20
-------	------	------	------	------	------	------	------	------	------

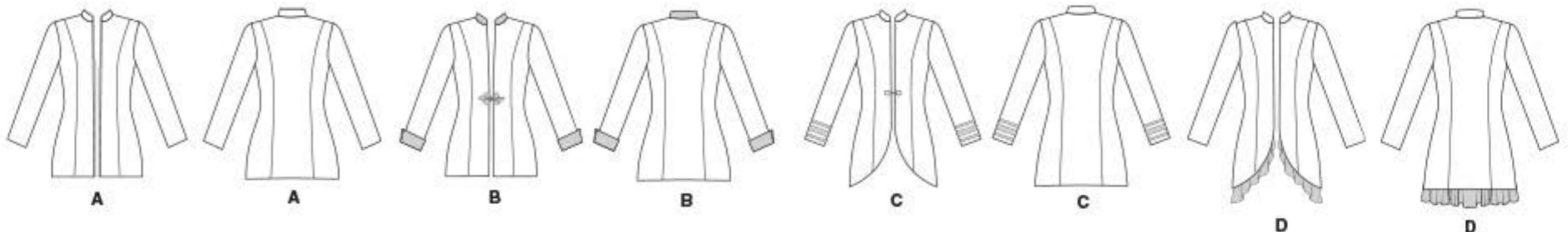
ENTOILAGE THERMOCOLLANT C, D - 46, 51cm - 1.2m

MERCERIE: **A:** 1.9m de Biais gansé. **B:** 1 Brandebourg. **C:** 2 Boutons de 19mm - 25mm, 1 Agrafe pour manteau, 1.4m de Ruban de 1cm - 1.5cm, 1.0m de Ruban de 2.5cm - 3.2cm.

MESURES DU VÊTEMENT FINI

Longueur - dos, votre nuque à l'ourlet

A, B	70	71	71	72	72	73	74	74	75
C, D	80	81	81	82	83	83	84	85	85



BUTTERICK PATTERN, 120 BROADWAY, NEW YORK 10271 © 2018 The McCall Pattern Company, Inc.

• www.butterick.com • PRINTED IN U.S.A. ALL RIGHTS RESERVED. SOLD FOR INDIVIDUAL HOME USE ONLY AND NOT FOR COMMERCIAL OR MANUFACTURING PURPOSE RESERVE À UN USAGE PERSONNEL.

