

U.S. \$19.95 CAN. \$19.95 ● BLACK M

B6603

AVERAGE/MOINS FACILE

MISSES' CAPE: Lined, semi-fitted capes have front and back darts, front button closures, and sleeveless. **B:** Ruffle. **C, D:** Collar.

Combinations: **A5(6-8-10-12-14), E5(14-16-18-20-22)**

FABRICS: Wool Blends, Tweed, Gabardine, Ponte Knit. **Lining:** Lining Fabrics.

Unsuitable for obvious diagonals.

*With Nap. **Without Nap.

SIZES	6	8	10	12	14	16	18	20	22
A 45"/**	2½	2⅝	2¾	2⅞	3⅛	3⅛	3¼	3⅜	3½
60"/**	2⅞	2¼	2¼	2¼	2¼	2¼	2⅜	2⅜	2⅜
LINING A									
45"	2¼	2¼	2⅜	2⅜	2⅜	2½	2⅝	2⅝	2¾
B 45"/**	3⅞	3⅞	3⅞	3⅞	3⅞	3⅞	3½	3⅝	3¾
60"/**	2½	2½	2½	2½	2½	2¾	2¾	2¾	2¾
C 45"/**	2⅝	2⅝	2¾	2⅞	3¼	3¼	3¼	3⅜	3⅜
60"/**	2⅞	2¼	2¼	2¼	2¼	2⅜	2⅜	2⅜	2⅜

LINING B, C

45"	2¼	2¼	2¼	2⅜	2⅜	2½	2⅝	2¾	2¾
-----	----	----	----	----	----	----	----	----	----

INTERFACING A, B, C - 18", 20" - 1 yd.

D 45"/**	2⅞	2⅞	3	3⅜	3⅜	3⅜	3½	3½	3½
60"/**	2⅜	2⅜	2½	2½	2½	2⅝	2⅝	2¾	2¾

LINING D

45"	2½	2½	2½	2⅝	2⅝	2¾	2⅞	3	3⅞
-----	----	----	----	----	----	----	----	---	----

INTERFACING D - 18", 20" - 1½ yds.

NOTIONS: B, D: 1" Buttons: Four for B and Five for D.

FINISHED GARMENT MEASUREMENTS

Width, lower edge

A, B, C, D	38½	39½	40½	42	44	46	48	50	52
------------	-----	-----	-----	----	----	----	----	----	----

Back length from base of neck

A, B, C, D	22½	22¾	23	23¼	23½	23¾	24	24¼	24½
------------	-----	-----	----	-----	-----	-----	----	-----	-----

CAPE (J. FEMME): Capes doublées, semi-ajustées à pinces devant et dos, fermetures à bouton devant, et sans manches. **B:** Volant. **C, D:** Col.

Séries: **A5(6-8-10-12-14), E5(14-16-18-20-22)**

TISSUS: Lainage, Tweed, Gabardine, Maille de ponte. **Doublure:** Tissus à doublure.

Grandes diagonales ne conviennent pas.

*Avec Sens. **Sans Sens.

TAILLES	6	8	10	12	14	16	18	20	22
A 115cm/**	2.30	2.40	2.60	2.70	2.90	2.90	3.00	3.10	3.20
150cm/**	2.00	2.10	2.10	2.10	2.10	2.10	2.20	2.20	2.20
DOUBLURE A									
115cm	2.10	2.10	2.20	2.20	2.20	2.30	2.40	2.40	2.60
B 115cm/**	2.90	2.90	2.90	2.90	3.10	3.10	3.20	3.40	3.50
150cm/**	2.30	2.30	2.30	2.30	2.30	2.60	2.60	2.60	2.60
C 115cm/**	2.40	2.40	2.60	2.70	3.00	3.00	3.00	3.10	3.10
150cm/**	2.00	2.10	2.10	2.10	2.10	2.20	2.20	2.20	2.20

DOUBLURE B, C

115cm	2.10	2.10	2.10	2.20	2.20	2.30	2.40	2.60	2.60
-------	------	------	------	------	------	------	------	------	------

ENTOILAGE A, B, C - 46, 51cm - 1.0m

D 115cm/**	2.70	2.70	2.80	3.10	3.10	3.10	3.20	3.20	3.20
150cm/**	2.20	2.20	2.30	2.30	2.30	2.40	2.40	2.60	2.60

DOUBLURE D

115cm	2.30	2.30	2.30	2.40	2.40	2.60	2.70	2.80	2.90
-------	------	------	------	------	------	------	------	------	------

ENTOILAGE D - 46, 51cm - 1.1m

MERCERIE: B, D: Boutons de 25mm: 4 pour B et 5 pour D.

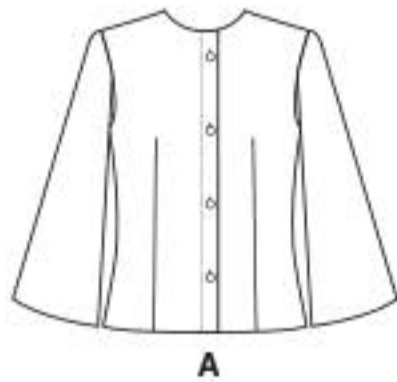
MESURES DU VÊTEMENT FINI

Largeur à l'ourlet

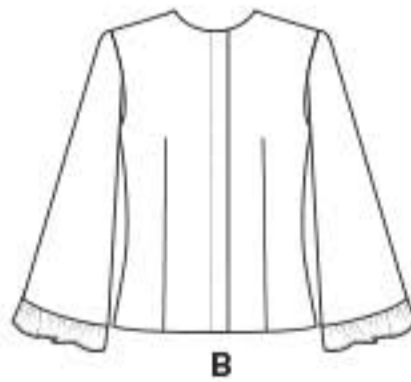
A, B, C, D	98	100	103	107	112	117	122	127	132
------------	----	-----	-----	-----	-----	-----	-----	-----	-----

Longueur - dos, votre nuque à l'ourlet

A, B, C, D	57	58	59	59	60	61	61	62	62
------------	----	----	----	----	----	----	----	----	----



A



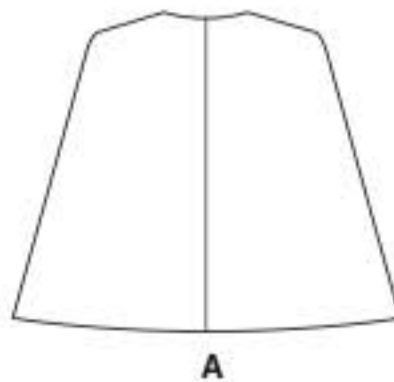
B



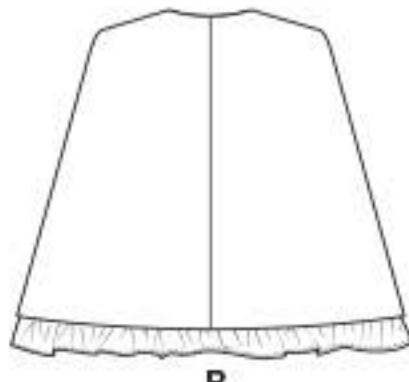
C



D



A



B



C



D

BUTTERICK PATTERN, 120 BROADWAY, NEW YORK 10271 © 2018 The McCall Pattern Company, Inc.

• www.butterick.com • PRINTED IN U.S.A. ALL RIGHTS RESERVED. SOLD FOR INDIVIDUAL HOME USE ONLY AND NOT FOR COMMERCIAL OR MANUFACTURING PURPOSE RESERVE À UN USAGE PERSONNEL.

