

U.S. \$19.95 CAN. \$19.95 ● YELLOW L

B6624

EASY/FACILE

MISSES'/MISSES' PETITE/WOMEN'S/WOMEN'S PETITE DRESS: Fitted sheath dress has neck facings and invisible back zipper with hook and eye and neckline, sleeve and skirt variations. **A:** Topstitched hems. **B:** Contrast bands. **C:** Purchased cord edge piping.

Combinations: **B5(8-10-12-14-16), RR(18W-20W-22W-24W)**
FABRICS: Cotton Blends, Challis, Crepe, Sateen, Linen, Broadcloth.
 Unsuitable for obvious diagonals.
 *With Nap. **Without Nap.

SIZES	Misses'					Women's			
	8	10	12	14	16	18W	20W	22W	24W
A 45"/**	2½	2½	2½	2½	2½	2¾	2¾	2¾	2¾
60"/**	1⅞	1⅞	1⅞	1⅞	1⅞	2	2	2	2
FUSIBLE INTERFACING A - 18", 20" - ⅝ yd.									
B 45"/**	2¾	2¾	2¾	2¾	2¾	2½	2½	2½	2½
60"/**	1⅞	1⅞	1⅞	1⅞	1⅞	2⅞	2⅞	2⅞	2⅞
CONTRAST B									
45"/**	1⅞	1⅞	1⅞	1⅞	1⅞	1⅞	1⅞	1⅞	1⅞
60"/**	1	1	1	1	1	1	1	1	1
C 45"/**	2¾	2¾	2¾	3	3	3¾	3¾	3¾	3¾
60"/**	2¼	2¼	2¼	2¼	2¼	2½	2½	2½	2½

FUSIBLE INTERFACING B, C - 18", 20" - ½ yd.
NOTIONS: **A, B, C:** One 22" Invisible Zipper, ⅛" Piping: 2 yds. for Misses' and 2½ yds. for Women's, One Hook and Eye.

FINISHED GARMENT MEASUREMENTS

Width, lower edge									
A, B, C	36	37	38½	40½	42½	45	47	49	51
Back length from base of neck									
A, B, C	36¾	37	37¼	37½	37¾	39	39¼	39½	39¾

ROBE (J. FEMME/PETITE J. FEMME/FEMME/PETITE FEMME): Robe fourreau ajustée à parementures d'encolure et fermeture à glissière invisible au dos avec agrafe et variations d'encolure, de manche et de jupe. **A:** Ourlets surpiqués. **B:** Bandes contrastantes. **C:** Biais gansé acheté.

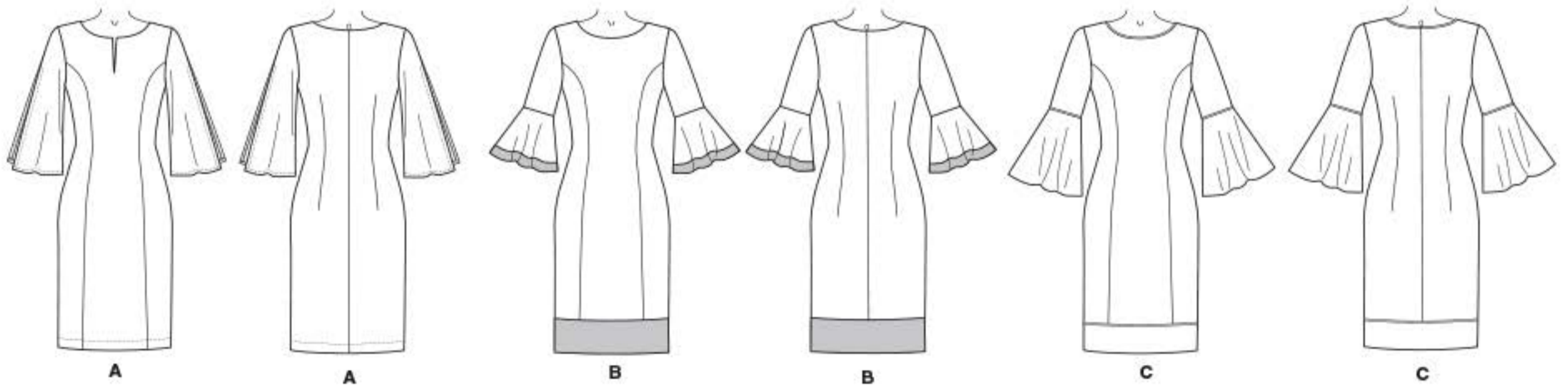
Séries: **B5(8-10-12-14-16), RR(18W-20W-22W-24W)**
TISSUS: Cotonnade, Etamine, Crêpe, Satinette, Toile de lin, Toile fin.
 Grandes diagonales ne conviennent pas.
 *Avec Sens. **Sans Sens.

TAILLES	J. Femme					Femme			
	8	10	12	14	16	18W	20W	22W	24W
A 115cm*/**	2.30	2.30	2.30	2.30	2.30	2.60	2.60	2.60	2.60
150cm*/**	1.80	1.80	1.80	1.80	1.80	1.90	1.90	1.90	1.90
ENTOILAGE THERMOCOLLANT A - 46, 51cm - 0.6m									
B 115cm*/**	2.20	2.20	2.20	2.20	2.20	2.30	2.30	2.30	2.30
150cm*/**	1.80	1.80	1.80	1.80	1.80	2.00	2.00	2.00	2.00
CONTRASTE B									
115cm*/**	1.10	1.10	1.10	1.10	1.10	1.80	1.80	1.80	1.80
150cm*/**	1.00	1.00	1.00	1.00	1.00	1.00	1.00	1.00	1.00
C 115cm*/**	2.60	2.60	2.60	2.80	2.80	3.10	3.10	3.10	3.10
150cm*/**	2.10	2.10	2.10	2.10	2.10	2.30	2.30	2.30	2.30

ENTOILAGE THERMOCOLLANT B, C - 46, 51cm - 0.5m
MERCERIE: **A, B, C:** 1 Fermeture à glissière invisible de 55cm, Biais gansé de 3mm: 1.9m pour Jeune Femme et 2.3m pour Femme, 1 Agrafe.

MESURES DU VÊTEMENT FINI

Largeur à l'ourlet									
A, B, C	92	94	98	103	108	115	120	125	130
Longueur - dos, votre nuque à l'ourlet									
A, B, C	94	94	95	95	96	99	100	100	101



©2018 Butterick® a CSS Industries, Inc. brand, Berwick, PA 18603. All rights reserved. Trademarks Reg. U.S. Pat. & TM Off. Marca Registrada. Sold for individual home use only and not for commercial or manufacturing purposes. www.butterick.com Reserve à un usage personnel. Utilisation commerciale ou industrielle strictement interdite.

MADE IN U.S.A. FABRIQUÉ AUX ÉTATS-UNIS.

