

B6745

13 PIECES

Easy
Facile

MISSES' VEST

Fabrics: A, B, C, D: Light weight Linen, Lightweight Broadcloth, Lt. wt. Tweed, Lt. wt. Gabardine. E: Fake Fur.

Notions: C, D: 5/8" Buttons: Three for C and Four for D.

Sizes		XS (4-6)	S (8-10)	M (12-14)	L (16-18)	XL (20-22)	XXL (24-26)	
Vest A	45"/**	1 3/8	1 3/8	1 3/8	1 5/8	1 5/8	1 3/4	Yd
	60"/**	1 1/8	1 1/8	1 3/8	1 3/8	1 3/8	1 1/2	"
Fusible Interfacing A								
	18, 20"	3/4	3/4	3/4	7/8	7/8	7/8	Yd
Vest B	45"/**	1 5/8	1 3/4	1 3/4	2	2	2	Yd
	60"/**	1 1/4	1 1/4	1 1/4	1 3/8	1 1/2	1 5/8	"
Fusible Interfacing B								
	18, 20"	1 1/4	1 1/4	1 3/8	1 3/8	1 3/8	1 3/8	Yd
Lining A, B- 45"		7/8	7/8	1	1	1 1/8	1 1/4	"
Vest C	45"/**	1	1	1 1/4	1 3/8	1 3/8	1 3/8	Yd
	60"/**	1	1	1	1	1 1/8	1 1/8	"
Fusible Interfacing C								
	18, 20"	5/8	5/8	3/4	1	1 1/8	1 1/8	Yd
Lining C- 45"		5/8	5/8	5/8	5/8	3/4	3/4	"
Vest D	45"/**	1 1/8	1 1/8	1 1/4	1 1/4	1 3/8	1 3/8	Yd
	60"/**	1	1	1	1	1 1/8	1 1/8	"
Fusible Interfacing D								
	18, 20"	5/8	5/8	7/8	1	1	1 1/8	Yd
Lining D- 45"		5/8	5/8	5/8	5/8	3/4	3/4	"
Vest E	60"/**	7/8	7/8	7/8	1	1 3/4	1 7/8	Yd
Lining E- 45"		1 3/4	1 3/4	1 3/4	1 3/4	1 7/8	1 7/8	"

FINISHED GARMENT MEASUREMENTS

Vest C, D Width	32	34	37 1/2	41 1/2	45 1/2	49 1/2	In
Back length from base of neck:							
Vest A, B	20 1/2	21	21 1/2	22	22 1/2	23	In
Vest C, D	17	17 1/2	18	18 1/2	19	19 1/2	"
Vest E	27 1/2	28	28 1/2	29	29 1/2	30	"

GILET POUR JEUNE FEMME

Tissus: A, B, C, D: Toile de Lin Fine, Popeline Fine, Tweed Fin et Gabardine Fine. E: Fausse fourrure.

Mercerie: C, D: Boutons (16 mm): 3 pour C et 4 pour D.

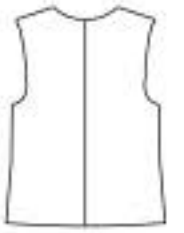
Tailles		TP	P	M	G	TG	TTG	
Gilet A	115cm*/**	1.3	1.3	1.3	1.5	1.5	1.6	m
	150cm*/**	1.1	1.1	1.3	1.3	1.3	1.4	"
Entoilage Thermocollant A								
	46, 51cm	0.7	0.7	0.7	0.8	0.8	0.8	m
Gilet B	115cm*/**	1.5	1.6	1.6	1.9	1.9	1.9	m
	150cm*/**	1.2	1.2	1.2	1.3	1.4	1.5	"
Entoilage Thermocollant B								
	46, 51cm	1.2	1.2	1.3	1.3	1.3	1.3	m
Doublure A, B- 115cm		0.8	0.8	1.0	1.0	1.1	1.2	m
Gilet C	115cm*/**	1.0	1.0	1.2	1.3	1.3	1.3	m
	150cm*/**	1.0	1.0	1.0	1.0	1.1	1.1	"
Entoilage Thermocollant C								
	46, 51cm	0.6	0.6	0.7	1.0	1.1	1.1	m
Doublure C- 115cm		0.6	0.6	0.6	0.6	0.7	0.7	"
Gilet D	115cm*/**	1.1	1.1	1.2	1.2	1.3	1.3	m
	150cm*/**	1.0	1.0	1.0	1.0	1.1	1.1	"
Entoilage Thermocollant D								
	46, 51cm	0.6	0.6	0.8	1.0	1.0	1.1	m
Doublure D- 115cm		0.6	0.6	0.6	0.6	0.7	0.7	"
Gilet E	150cm*	0.8	0.8	0.8	1.0	1.6	1.8	m
Doublure E- 115cm		1.6	1.6	1.6	1.6	1.8	1.8	"

*with nap **without nap

*avec sens **sans sens



A



A



B



B



C



D



CD



E



E