

B6751

10 PIECES

Very Easy
Très Facile

MISSES' AND MISSES' PETITE TOP

Fabrics: Lightweight Faille, Lightweight Crepe, Lightweight Broadcloth, Stable Knits, Challis. Unsuitable for obvious diagonals.

Notions: Top A,B: ½" (13mm) Single Fold Bias Tape. Top C,D: One ¾" (10mm) Button.

Sizes	8	10	12	14	16	18	20	22	24	
Top A										
45"/**	5/8	5/8	5/8	1	1¼	1¼	1¼	1¾	1¾	Yd
60"/**	5/8	5/8	5/8	5/8	5/8	5/8	5/8	¾	¾	"
Top B										
45"/**	¾	¾	¾	1¾	1⅞	1⅞	1⅞	1⅞	1⅞	Yd
60"/**	¾	¾	¾	¾	7/8	7/8	7/8	7/8	7/8	"
Top C										
45"/**	1¾	1¾	1½	1½	1¾	1¾	1⅞	1⅞	1⅞	Yd
60"/**	1⅞	1¼	1¼	1¼	1¼	1¼	1¼	1¼	1½	"
Top D										
45"/**	2⅞	2⅞	2¾	2¾	2¾	2⅞	2¾	2¾	2⅞	Yd
60"/**	1½	1½	1⅞	1⅞	1⅞	1⅞	1⅞	1⅞	1⅞	"
Top E										
45"/**	2	2	2	2	2	2½	2½	2½	2⅞	Yd
60"/**	1¾	1¾	1¾	1¾	1¾	1½	1½	1½	1½	"
Top F										
45"/**	1⅞	1⅞	1⅞	1¾	2¼	2¼	2¾	2¾	2¾	Yd
60"/**	1¾	1¾	1¾	1½	1¾	1¾	1¾	1¾	1¾	"

FINISHED GARMENT MEASUREMENTS

A, B Width	38	39	40	42	44	46	48	50	52	In
C, D, E, F Width	39	40	41	43	45	47	49	51	53	"
Back length from base of neck:										
A	18¾	19	19¼	19½	19¾	20	20¼	20½	20¾	In
B	24	24¼	24½	24¾	25	25¼	25½	25¾	26	"
C	21¼	21½	21¾	22	22¼	22½	22¾	23	23¼	"
D	25¼	25½	25¾	26	26¼	26½	26¾	27	27¼	"
E	19¾	20	20¼	20½	20¾	21	21¼	21½	21¾	"
F	26¼	26½	26¾	27	27¼	27½	27¾	28	28¼	"

HAUT POUR JEUNE FEMME ET PETITE JEUNE FEMME

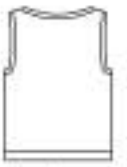
Tissus: Faille, Crepe ou toile fins, Maille à peu d'élasticité, Challis. Grandes diagonales ne conviennent pas.

Mercerie: Haut A,B: Ruban biaisé simple (13mm). Haut C,D: 1 bouton (10mm).

Tailles	8	10	12	14	16	18	20	22	24	
Haut A										
115cm/**	0.6	0.6	0.6	1.0	1.2	1.2	1.2	1.3	1.3	m
150cm/**	0.6	0.6	0.6	0.6	0.6	0.6	0.6	0.7	0.7	"
Haut B										
115cm/**	0.7	0.7	0.7	1.3	1.5	1.5	1.5	1.5	1.5	m
150cm/**	0.7	0.7	0.7	0.7	0.8	0.8	0.8	0.8	0.8	"



A



A



B



B



C



C



D



D



E



E



F



F