

# B6758

16 PIECES

Easy  
Facile

## MISSES' AND MISSES' PETITE DRESS

Fabrics: Cotton Blends, Linen, Crepe, Challis. Unsuitable for obvious diagonals.

Notions: A,B:  $\frac{5}{8}$  yd. (0.6m) of  $\frac{3}{8}$ " (1cm) Elastic, Nine  $\frac{1}{2}$ " (1.3cm) Buttons.

Sizes	6	8	10	12	14	16	18	20	22
-------	---	---	----	----	----	----	----	----	----

A										Yd
45"/**	$2\frac{5}{8}$	$2\frac{5}{8}$	$2\frac{5}{8}$	$2\frac{5}{8}$	$2\frac{5}{8}$	$2\frac{3}{4}$	$2\frac{3}{4}$	$2\frac{3}{4}$	$2\frac{7}{8}$	"
60"/**	$1\frac{3}{4}$	$1\frac{3}{4}$	$1\frac{3}{4}$	$1\frac{7}{8}$	$1\frac{7}{8}$	$1\frac{7}{8}$	$2\frac{1}{8}$	$2\frac{1}{4}$	$2\frac{1}{4}$	"

Fusible Interfacing A- 18, 20"-  $1\frac{1}{8}$  yds.

B										Yd
45"/**	$2\frac{7}{8}$	$2\frac{7}{8}$	$2\frac{7}{8}$	$2\frac{7}{8}$	$3\frac{1}{8}$	$3\frac{1}{4}$	$3\frac{1}{4}$	$3\frac{1}{4}$	-	"
60"/**	$2\frac{1}{8}$	$2\frac{1}{8}$	$2\frac{1}{8}$	$2\frac{1}{8}$	$2\frac{1}{4}$	$2\frac{1}{4}$	$2\frac{5}{8}$	$2\frac{5}{8}$	$2\frac{5}{8}$	"

Fusible Interfacing B- 18, 20"- 1 yd.

## FINISHED GARMENT MEASUREMENTS

Back length from base of neck:

	6	8	10	12	14	16	18	20	22	In
A	$37\frac{1}{2}$	$37\frac{3}{4}$	38	$38\frac{1}{4}$	$38\frac{1}{2}$	$38\frac{3}{4}$	39	$39\frac{1}{4}$	$39\frac{1}{2}$	"
B	42	$42\frac{1}{4}$	$42\frac{1}{2}$	$42\frac{3}{4}$	43	$43\frac{1}{4}$	$43\frac{1}{2}$	$43\frac{3}{4}$	44	"

## ROBE POUR JEUNE FEMME ET PETITE JEUNE FEMME

Tissus: Cotonnades, Toile de Lin, Crêpe, Challis. Grandes diagonales ne conviennent pas.

Mercerie: A,B: 0.6m d'Élastique de 1cm, 9 Boutons de 1.3cm.

Tailles Françaises	6	8	10	12	14	16	18	20	22
	34	36	38	40	42	44	46	48	50

A										m
115cm*/**	2.4	2.4	2.4	2.4	2.4	2.6	2.6	2.6	2.7	"
150cm*/**	1.6	1.6	1.6	1.8	1.8	1.8	2.0	2.1	2.1	"

Entoilage Thermo collant A- 46, 51cm- 1.1m.

B										m
115cm*/**	2.7	2.7	2.7	2.7	2.9	3.0	3.0	3.0	-	"
150cm*/**	2.0	2.0	2.0	2.0	2.1	2.1	2.4	2.4	2.4	"

Entoilage Thermo collant B- 46, 51cm- 1.0m.

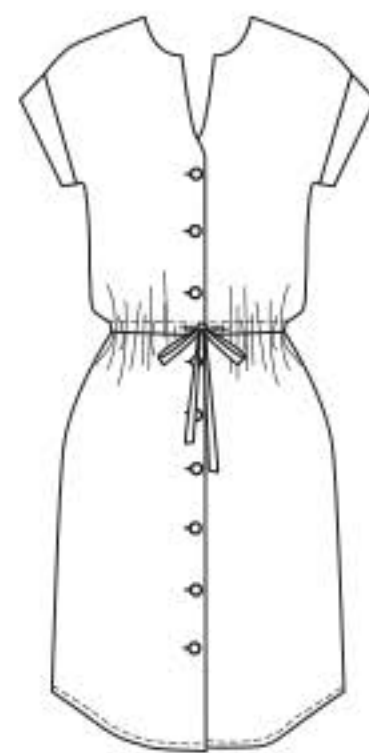
## MESURES DU VÊTEMENT FINI

Longueur- dos, votre nuque à l'ourlet:

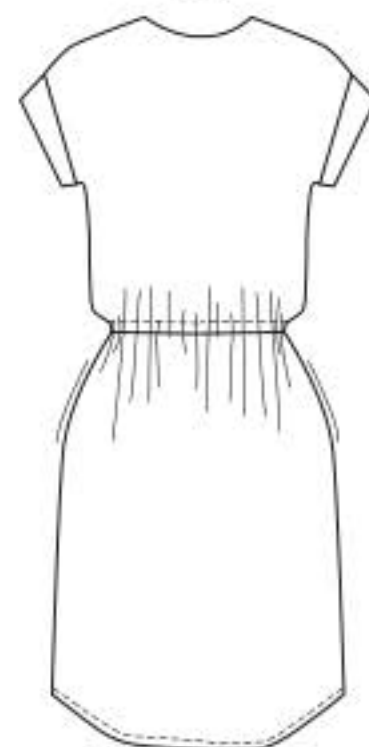
	6	8	10	12	14	16	18	20	22	cm
A	95	96	97	97.5	98	98.5	99	99.5	100	"
B	107	107	108	109	109	110	111	111.5	112	"

\*with nap \*\*without nap

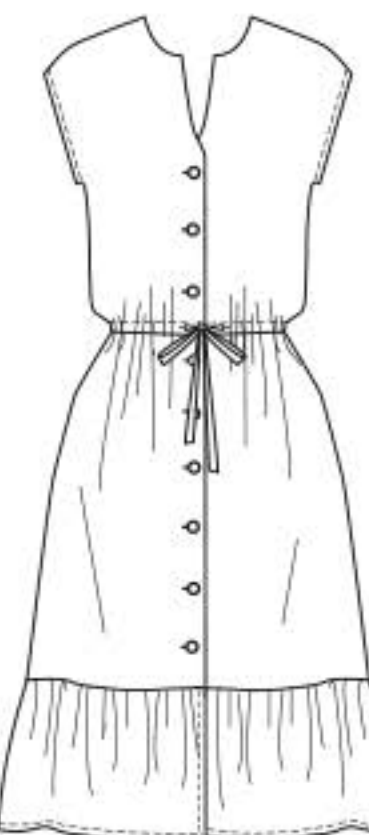
\*avecsens \*\*sans sens



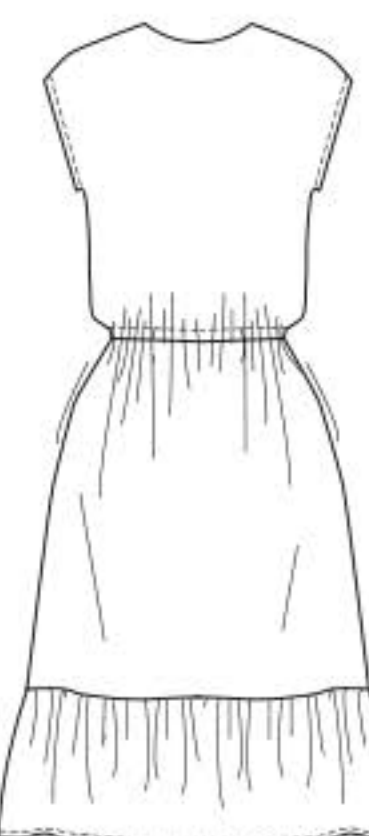
A



A



B



B