

U.S. \$19.95 CAN. \$19.95 ● YELLOW **L**

B6686

VERY EASY/TRÈS FACILE

MISSES' TOP: Semi-fitted, button front tops have gathers at back, collar, sleeve variations, and shaped hem.

Combinations: **A5**(6-8-10-12-14), **E5**(14-16-18-20-22)

FABRICS: Cotton Blends, Crepe de Chine, Lightweight Linen, Double Georgette, Challis.

Unsuitable for obvious diagonals.

*With Nap. **Without Nap.

SIZES	6	8	10	12	14	16	18	20	22
A 45**/**	1¾	1⅞	1⅞	2⅞	2⅞	2⅞	2⅞	2¼	2¼
60**/**	1¼	1¼	1¼	1¼	1⅜	1½	1½	1¾	1⅞
B 45**/**	2⅞	2⅞	2⅞	2⅞	2¼	2¼	2¾	2¾	2¾
60**/**	1½	1½	1½	1½	1½	1¾	1¾	2	2⅞
C 45**/**	2⅞	2⅞	2¼	2¼	2¼	2¼	2½	2½	2½
60**/**	1½	1½	1½	1½	1½	1½	1½	1⅞	1⅞
D 45**/**	2¾	2¾	2¾	2½	2½	2½	2¾	2¾	2¾
60**/**	1¾	1¾	1¾	1¾	1¾	1¾	1¾	2	2

FUSIBLE INTERFACING A, B, C, D - 18", 20" - ¾ yd.

NOTIONS: Six ½" Buttons.

FINISHED GARMENT MEASUREMENTS

Back length from base of neck

A, B, C, D	25	25¼	25½	25¾	26	26¼	26½	26¾	27
------------	----	-----	-----	-----	----	-----	-----	-----	----

HAUT (J. FEMME): Hauts semi-ajustés, boutonnés devant, à fronces sur le dos, col, variations de manche, et ligne d'ourlet en forme.

Séries: **A5**(6-8-10-12-14), **E5**(14-16-18-20-22)

TISSUS: Cotonnade, Crêpe de Chine, Toile de lin fine, Crêpe georgette double, Etamine.

Grandes diagonales ne conviennent pas.

*Avec Sens. **Sans Sens.

TAILLES	6	8	10	12	14	16	18	20	22
A 115cm**/**	1.60	1.80	1.80	2.00	2.00	2.00	2.00	2.10	2.10
150cm**/**	1.20	1.20	1.20	1.20	1.30	1.40	1.40	1.60	1.80
B 115cm**/**	2.00	2.00	2.00	2.00	2.10	2.10	2.20	2.20	2.20
150cm**/**	1.40	1.40	1.40	1.40	1.40	1.60	1.60	1.90	2.00
C 115cm**/**	2.00	2.00	2.10	2.10	2.10	2.10	2.30	2.30	2.30
150cm**/**	1.40	1.40	1.40	1.40	1.40	1.40	1.40	1.80	1.80
D 115cm**/**	2.20	2.20	2.20	2.30	2.30	2.30	2.60	2.60	2.60
150cm**/**	1.60	1.60	1.60	1.60	1.60	1.60	1.60	1.90	1.90

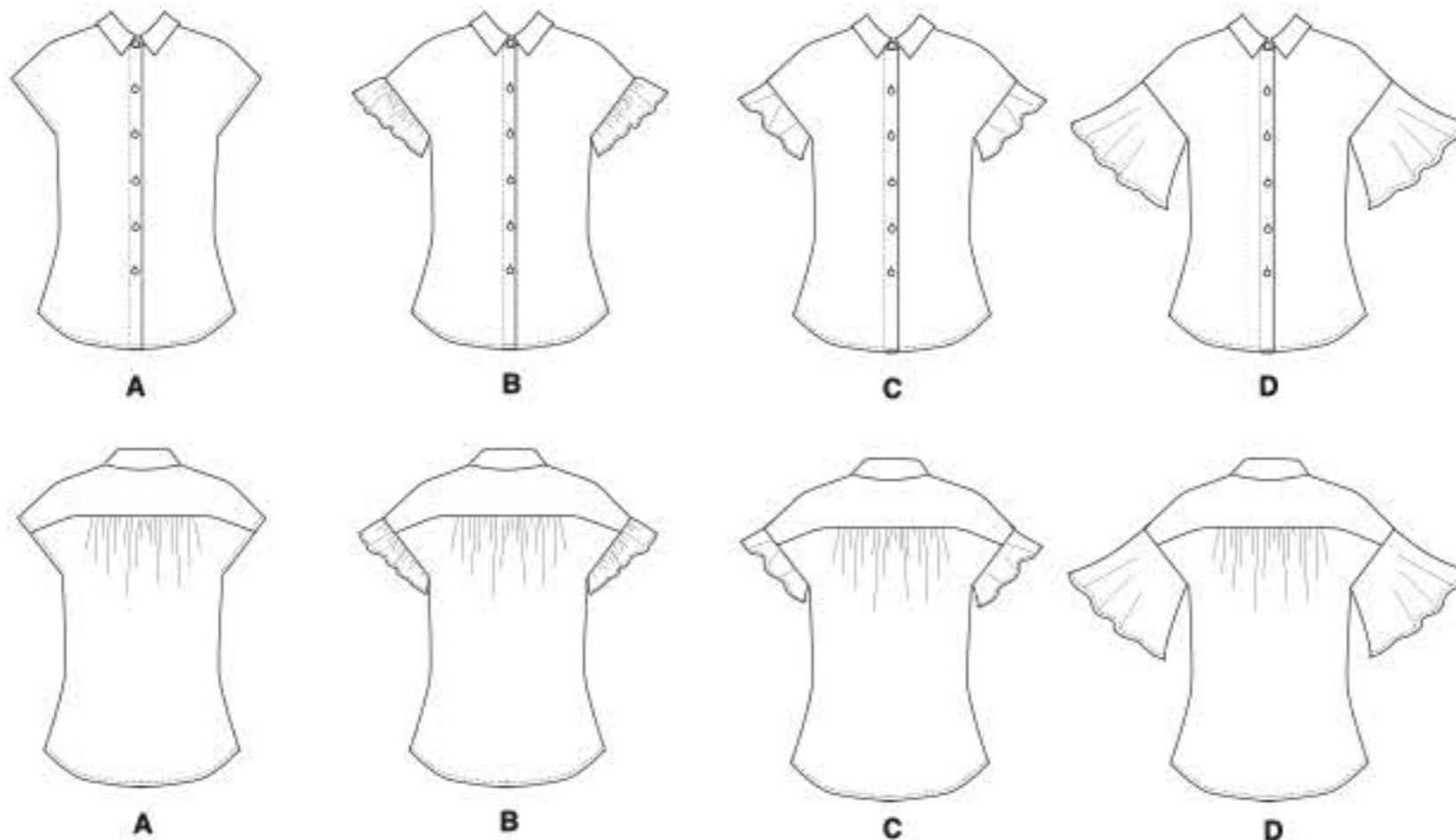
ENTOILAGE THERMOCOLLANT A, B, C, D - 46, 51cm - 0.7m

MERCERIE: 6 Boutons de 13mm.

MESURES DU VÊTEMENT FINI

Longueur - dos, votre nuque à l'ourlet

A, B, C, D	64	64	65	66	66	67	67	68	69
------------	----	----	----	----	----	----	----	----	----



©2019 Butterick® a CSS Industries, Inc. brand, Berwick, PA 18603. All rights reserved. Trademarks Reg. U.S. Pat. & TM Off. Marca Registrada. Sold for individual home use only and not for commercial or manufacturing purposes. www.butterick.com Reserve à un usage personnel. Utilisation commerciale ou industrielle strictement interdite.

MADE IN U.S.A. FABRIQUÉ AUX ÉTATS-UNIS.

