

3884

VESTE À CAPUCHE - HOODIE

FRÉDÉRIC

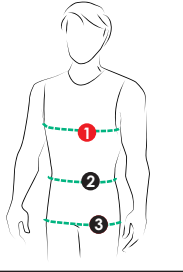
Veste en molleton zippée avec capuchon doublé et manche montée. Poches zippées avec ruban apparent à l'intérieur de la poche et découpe horizontale qui permet de faire des mélanges de couleurs ou d'imprimés. Les poignets et le bas du vêtement sont finis avec une bande côtelée.

27

tailles - sizes

Full-zip hoodie with set-in sleeve, lined hood and ribbed cuffs and hem. The angled zippered front pockets, with the zipper tape visible inside the pocket, and the horizontal seam allow for fun color blocking and is a great fleece stash buster!

MESURES DU CORPS (GARÇONS) - BODY MEASUREMENTS (BOYS)

| Âge approximatif - Approximate age | 2 | 3 | 4 | 5 | 6 | 7 | 8 | 9 | 10 | 11 | 12 | 13 | |
|--|---|------------------|--------------|------------------|--------------|--------------|------------------|--------------|------------------|------------------|------------------|------------------|------------------|
| Tailles européennes - European sizes | 92 | 98 | 104 | 112 | 119 | 127 | 135 | 142 | 146 | 150 | 152 | 155 | |
| TAILLE JALIE - JALIE SIZES | F | G | H | I | J | K | L | M | N | O | P | Q | |
|  | 1 TOUR DE POITRINE CHEST | 21" 53 cm | 22" 56 cm | 23" 58 cm | 24" 61 cm | 25" 64 cm | 26" 66 cm | 27" 69 cm | 28" 71 cm | 29" 74 cm | 30" 76 cm | 31" 79 cm | 32" 81 cm |
| | 2 TOUR DE TAILLE NATURAL WAIST | 19 1/2" 49 cm | 20" 50 cm | 20 1/2" 52 cm | 21" 54 cm | 22" 55 cm | 22 1/2" 57 cm | 23" 58 cm | 23 1/2" 60 cm | 24 1/2" 62 cm | 25 1/4" 64 cm | 25 3/4" 66 cm | 26 1/2" 67 cm |
| | 3 TOUR DES HANCHES HIPS (FULLEST) | 22" 55 cm | 23" 58 cm | 24" 61 cm | 25" 64 cm | 26" 66 cm | 27" 69 cm | 28" 71 cm | 28 3/4" 73 cm | 29 3/4" 75 cm | 30 1/2" 78 cm | 31 1/2" 80 cm | 32 3/4" 83 cm |

TISSU REQUIS - YARDAGE

| 60" 150 cm | VESTE HOODIE | 1 yd 0.70 m | 1 yd 0.80 m | 1 1/4 yd 0.90 m | 1 1/4 yd 0.95 m | 1 1/4 yd 1.00 m | 1 1/4 yd 1.05 m | 1/2 yd 1.10 m | 1 1/2 yd 1.20 m | 2 yd 1.60 m | 2 yd 1.65 m | 2 yd 1.65 m | 2 1/4 yd 1.80 m |
|--|--------------------------|--|------------------|--------------------|--------------------|--------------------|--------------------|------------------|--------------------|------------------|------------------|----------------------|--------------------|
| Tissu principal: Molleton, coton ouaté Doublure du capuchon: jersey léger Bandes (poignet et ourlet): bande côtelée Main fabric: Sweatshirt fleece, stable knit Hood lining: light-weight jersey Cuffs + hem bands: Ribbing | DOUBLURE LINING | 1/2 yd 0.35 m | 1/2 yd 0.35 m | 1/2 yd 0.35 m | 1/2 yd 0.40 m | 1/2 yd 0.40 m | 1/2 yd 0.40 m | 1/2 yd 0.40 m | 1/2 yd 0.40 m | 1/2 yd 0.40 m | 1/2 yd 0.45 m | 1/2 yd 0.45 m | 1/2 yd 0.45 m |
| | BANDE CÔTELÉE RIBBING | 1/4 yd 0.20 m | 1/4 yd 0.20 m | 1/4 yd 0.20 m | 1/4 yd 0.20 m | 1/4 yd 0.20 m | 1/4 yd 0.20 m | 1/4 yd 0.20 m | 1/4 yd 0.20 m | 1/4 yd 0.20 m | 1/2 yd 0.25 m | 1/2 yd 0.25 m | 1/2 yd 0.25 m |
| 15% ÉLASTICITÉ MINIMUM REQUISE (LARGEUR) MINIMUM STRETCH REQUIRED (WIDTH) | | VOTRE TISSU DEVRAIT S'ÉTIRER YOUR FABRIC SHOULD STRETCH | | | | | | | | | | JUSQU'ICI TO HERE | |

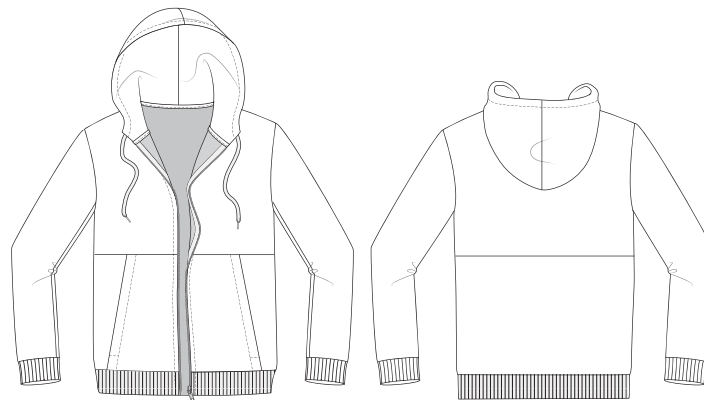
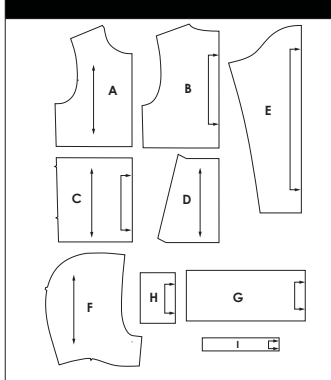
MESURES DU CORPS (HOMMES) - BODY MEASUREMENTS (MEN)

| Prêt-à-porter APPROX. US size | 34 (XS) | 36 (S) | 38 (M) | 40 (M) | 42 (L) | 44 (L) | 46 (XL) | 48 (XL) | 50 (XXL) | | | | | | |
|---|------------------|--------------|--------------|--------------|--------------|--------------|--------------|---------------|---------------|---------------|---------------|---------------|---------------|---------------|---------------|
| Tailles euro - European sizes | 44 | 46 | 48 | 50 | 52 | 54 | 56 | 58 | 48 | | | | | | |
| TAILLE JALIE - JALIE SIZES | R | S | T | U | V | W | X | Y | Z | AA | BB | CC | DD | EE | FF |
| 1 TOUR DE POITRINE CHEST | 33" 84 cm | 34" 86 cm | 35" 89 cm | 36" 91 cm | 37" 94 cm | 38" 97 cm | 39" 99 cm | 40" 102 cm | 41" 104 cm | 42" 107 cm | 43" 109 cm | 44" 112 cm | 46" 117 cm | 48" 122 cm | 50" 127 cm |
| 2 TOUR DE TAILLE NATURAL WAIST | 27 1/2" 69 cm | 28" 71 cm | 29" 74 cm | 30" 76 cm | 31" 79 cm | 32" 81 cm | 33" 84 cm | 34" 86 cm | 36" 91 cm | 38" 97 cm | 40" 102 cm | 42" 107 cm | 44" 112 cm | 46" 117 cm | 48" 122 cm |
| 3 TOUR DES HANCHES HIPS (FULLEST) | 33 1/2" 85 cm | 34" 86 cm | 35" 89 cm | 36" 91 cm | 37" 94 cm | 38" 97 cm | 39" 99 cm | 40" 102 cm | 42" 107 cm | 43" 109 cm | 44" 112 cm | 45" 114 cm | 47" 119 cm | 49" 124 cm | 51" 130 cm |

TISSU REQUIS - YARDAGE

| | | | | | | | | | | | | | | | |
|--------------------------|--------------------|--------------------|--------------------|--------------------|--------------------|--------------------|--------------------|--------------------|--------------------|--------------------|--------------------|--------------------|--------------------|--------------------|--------------------|
| VESTE HOODIE | 2 1/4 yd 1.85 m | 2 1/4 yd 1.95 m | 2 1/4 yd 1.95 m | 2 1/4 yd 1.95 m | 2 1/4 yd 2.00 m | 2 1/4 yd 2.00 m | 2 1/4 yd 2.00 m | 2 1/2 yd 2.05 m | 2 1/2 yd 2.05 m | 2 1/2 yd 2.05 m | 2 1/2 yd 2.05 m | 2 1/2 yd 2.05 m | 2 1/2 yd 2.05 m | 2 1/2 yd 2.05 m | 2 1/2 yd 2.05 m |
| DOUBLURE LINING | 1/2 yd 0.45 m | 1/2 yd 0.45 m | 1/2 yd 0.45 m | 1/2 yd 0.45 m | 1/2 yd 0.45 m | 1/2 yd 0.45 m | 1/2 yd 0.45 m | 3/4 yd 0.50 m | 3/4 yd 0.50 m | 3/4 yd 0.50 m | 3/4 yd 0.50 m | 3/4 yd 0.50 m | 3/4 yd 0.50 m | 3/4 yd 0.50 m | 3/4 yd 0.50 m |
| BANDE CÔTELÉE RIBBING | 1/2 yd 0.25 m | 1/2 yd 0.25 m | 1/2 yd 0.25 m | 1/2 yd 0.25 m | 1/2 yd 0.25 m | 1/2 yd 0.25 m | 1/2 yd 0.25 m | 1/2 yd 0.25 m | 1/2 yd 0.25 m | 1/2 yd 0.25 m | 1/2 yd 0.25 m | 1/2 yd 0.25 m | 1/2 yd 0.25 m | 1/2 yd 0.35 m | 1/2 yd 0.35 m |

PIÈCES - PATTERN PIECES



MERCERIE - NOTIONS

| FERMETURE À GLISSIÈRE SÉPARABLE DETACHABLE ZIPPER | | FERMETURE À GLISSIÈRE EN NYLON, À BOUT FERMÉ NYLON OIL ZIPPER | |
|--|-------------|--|--------------|
| 1X | | 2X | |
| F-G | 40 cm (16") | F-P | 25 cm (10") |
| H-I | 45 cm (18") | Q-FF | 30 cm (12") |
| J-K | 50 cm (20") | CORDON DRAWSTRING | |
| L-M | 55 cm (22") | | |
| N-O | 60 cm (24") | 1X | |
| P-Q | 65 cm (26") | F-L | 0,80 m (32") |
| R | 70 cm (28") | M-R | 1,00 m (38") |
| S-FF | 75 cm (30") | S-FF | 1,10 m (44") |

PRÊT À COUDRE // READY TO SEW

ressources de couture (1 cm / 3/8") incluses dans le patron
1 cm / 3/8" seam allowances included in the pattern



5003884

Jalie
PATRONS DE COUDRE
SEWING PATTERNS

© 2018 LES PATRONS JALIE INC.

www.jalie.com

IMPRIMÉ AU CANADA / PRINTED IN CANADA