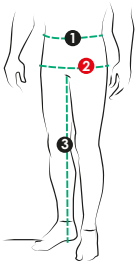


Un patron versatile qui peut être porté comme sous-vêtement, pour la baignade ou le sport. Élastique recouvert à la taille et choix de longueurs: caleçon boxeur, cuissard ou caleçon long. La poche contour (avec ouverture horizontale (B) ou sans ouverture (A)) et la découpe permettent un confort optimal.

A versatile pattern that can be used as underwear, for swim trunks and as leggings. Encased elastic at waist and three length options: briefs, mid-thigh shorts and long johns / leggings. It has two contoured pouch options (with horizontal fly (B) or seamless (A)) and clever seam placement for fit and comfort.

MESURES DU CORPS (GARÇONS) - BODY MEASUREMENTS (BOYS)

Âge approximatif - Approximate age	2	3	4	5	6	7	8	9	10	11	12	13
Tailles européennes - European sizes	92	98	104	112	119	127	135	142	146	150	152	155
TAILLE JALIE - JALIE SIZES	F	G	H	I	J	K	L	M	N	O	P	Q
1 TOUR DE TAILLE NATURAL WAIST	19 1/2"	20"	20 1/2"	21"	22"	22 1/2"	23"	23 1/2"	24 1/2"	25 1/4"	25 3/4"	26 1/2"
	49 cm	50 cm	52 cm	54 cm	55 cm	57 cm	58 cm	60 cm	62 cm	64 cm	66 cm	67 cm
2 TOUR DES HANCHES HIPS (FULLEST)	22"	23"	24"	25"	26"	27"	28"	28 3/4"	29 3/4"	30 1/2"	31 1/2"	32 3/4"
	55 cm	58 cm	61 cm	64 cm	66 cm	69 cm	71 cm	73 cm	75 cm	78 cm	80 cm	83 cm
3 ENTREJAMBE (JUSQU'AU SOL) INSEAM (TO THE FLOOR)	13 1/2"	15"	16 1/2"	18"	19 1/2"	21 1/2"	23 1/2"	25"	26 1/2"	28"	29 1/2"	31"
	34 cm	38 cm	42 cm	46 cm	50 cm	55 cm	60 cm	64 cm	67 cm	71 cm	75 cm	79 cm



TISSU REQUIS - YARDAGE

60" 150 cm	CALEÇON BOXEUR BOXER BRIEFS	1/2 yd	1/2 yd	1/2 yd	1/2 yd	1/2 yd	1/2 yd	1/2 yd	1/2 yd	1/2 yd	1/2 yd	1/2 yd	1/2 yd
		0.35 m	0.35 m	0.35 m	0.35 m	0.35 m	0.40 m	0.40 m	0.40 m	0.40 m	0.40 m	0.45 m	0.45 m
	CUISSARD MID-THIGH SHORTS	1/2 yd	1/2 yd	1/2 yd	1/2 yd	1/2 yd	3/4 yd	3/4 yd	3/4 yd	3/4 yd	3/4 yd	3/4 yd	3/4 yd
		0.40 m	0.40 m	0.45 m	0.45 m	0.45 m	0.50 m	0.50 m	0.50 m	0.55 m	0.55 m	0.55 m	0.60 m
	CALEÇON LONG / LEGGINGS LONG JOHNS / LEGGINGS	3/4 yd	3/4 yd	1 yd	1 yd	1 yd	1 yd	1 yd	1 1/4 yd	1 1/4 yd	1 1/4 yd	1 1/4 yd	1 1/4 yd
		0.70 m	0.70 m	0.75 m	0.80 m	0.85 m	0.85 m	0.90 m	0.95 m	1.00 m	1.00 m	1.05 m	1.05 m
Tricot extensible dans la largeur ET la longueur (coton/spandex, nylon/spandex, polar extensible pour la version longue) Knit with stretch in the width AND length and good recovery (cotton spandex, nylon/spandex, stretch fleece for the long johns).	50% ÉLASTICITÉ MINIMUM REQUISE MINIMUM STRETCH REQUIRED	VOTRE TISSU DEVRAIT S'ÉTIRER YOUR FABRIC SHOULD STRETCH									JUSQU'ICI TO HERE		

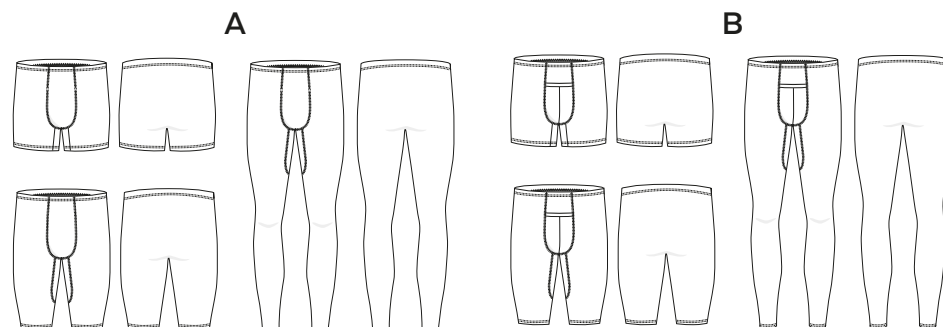
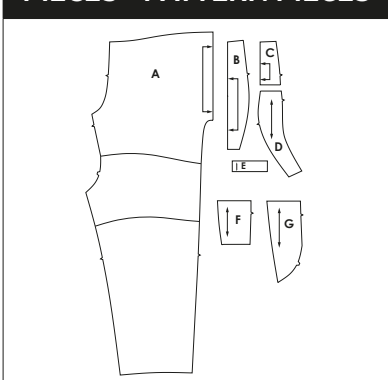
MESURES DU CORPS (HOMMES) - BODY MEASUREMENTS (MEN)

Prêt-à-porter APPROX. RTW size	XS	S				M			L	XL	XXL	XXXL			
Tailles euro - European sizes	2	3				4			5	6	7	8			
TAILLE JALIE - JALIE SIZES	R	S	T	U	V	W	X	Y	Z	AA	BB	CC	DD	EE	FF
1 TOUR DE TAILLE NATURAL WAIST	27 1/2"	28"	29"	30"	31"	32"	33"	34"	36"	38"	40"	42"	44"	46"	48"
	69 cm	71 cm	74 cm	76 cm	79 cm	81 cm	84 cm	86 cm	91 cm	97 cm	102 cm	107 cm	112 cm	117 cm	122 cm
2 TOUR DES HANCHES HIPS (FULLEST)	33 1/2"	34"	35"	36"	37"	38"	39"	40"	42"	43"	44"	45"	47"	49"	51"
	85 cm	86 cm	89 cm	91 cm	94 cm	97 cm	99 cm	102 cm	107 cm	109 cm	112 cm	114 cm	119 cm	124 cm	130 cm
3 ENTREJAMBE (JUSQU'AU SOL) INSEAM (TO THE FLOOR)	32 1/2"	34"	34"	34"	34"	34"	34"	34"	34"	34"	34"	34"	34"	34"	34"
	83 cm	86 cm	86 cm	86 cm	86 cm	86 cm	86 cm	86 cm	86 cm	86 cm	86 cm	86 cm	86 cm	86 cm	86 cm

TISSU REQUIS - YARDAGE

CALEÇON BOXEUR BOXER BRIEFS	1/2 yd	1/2 yd	3/4 yd	3/4 yd	3/4 yd	3/4 yd	3/4 yd	3/4 yd	3/4 yd	3/4 yd	1 yd	1 yd	1 yd	1 yd	1 yd
	0.45 m	0.45 m	0.50 m	0.50 m	0.55 m	0.55 m	0.55 m	0.55 m	0.60 m	0.65 m	0.75 m	0.75 m	0.75 m	0.80 m	0.85 m
CUISSARD MID-THIGH SHORTS	3/4 yd	3/4 yd	3/4 yd	3/4 yd	3/4 yd	3/4 yd	3/4 yd	1 yd	1 yd	1 yd	1 yd	1 yd	1 yd	1 yd	1 yd
	0.65 m	0.70 m	0.70 m	0.70 m	0.70 m	0.70 m	0.70 m	0.75 m	0.80 m	0.80 m	0.85 m	0.85 m	0.85 m	0.85 m	0.85 m
CALEÇON LONG / LEGGINGS LONG JOHNS / LEGGINGS	1 1/2 yd	1 1/2 yd	1 1/2 yd	1 1/2 yd	1 1/2 yd	1 1/2 yd	1 1/2 yd	1 1/2 yd	1 1/2 yd	1 1/2 yd	1 1/2 yd	1 1/2 yd	1 1/2 yd	1 1/2 yd	1 1/2 yd
	1.15 m	1.15 m	1.15 m	1.15 m	1.15 m	1.15 m	1.15 m	1.15 m	1.15 m	1.15 m	1.15 m	1.20 m	1.20 m	1.20 m	1.20 m

PIÈCES - PATTERN PIECES



MERCERIE - NOTIONS

A / B	
ÉLASTIQUE 2 cm 3/4" ELASTIC	F-L
	3/4 yd
	0.60 m
ÉLASTIQUE 2,5 cm 1" ELASTIC	M-FF
	1 1/4 yd
	1.10 m



PRÊT À COUDRE // READY TO SEW
ressources de couture (6 mm / 1/4") incluses dans le patron
6 mm / 1/4" seam allowances included in the pattern



5003885

Jalie
PATRONS DE COUTURE
SEWING PATTERNS

© 2018 LES PATRONS JALIE INC.
www.jalie.com

IMPRIMÉ AU CANADA / PRINTED IN CANADA