

Justaucorps demi-zip avec col montant, corsage devant (doublure facultative). Un patron conçu pour la danse est aussi parfait pour un maillot de bain qui sort de l'ordinaire! **A:** Justaucorps sans manches avec dos nageur **B:** Justaucorps avec mancheron et dos ouvert

Half-zip mock neck leotards with lined bodice front (optional).  
**A:** sleeveless, with racer back **B:** cap sleeve with open back

## MESURES DU CORPS (FILLES) - BODY MEASUREMENTS (GIRLS)

| Âge approximatif - Approximate age   | 2                                      | 3     | 4       | 5      | 6       | 7       | 8       | 9       | 10      | 11      | 12      | 13      |         |
|--|--|-------|---------|--------|---------|---------|---------|---------|---------|---------|---------|---------|---------|
| Tailles européennes - European sizes   | 92                                     | 98    | 104     | 112    | 119     | 127     | 135     | 142     | 146     | 150     | 152     | 155     |         |
| TAILLE JALIE - JALIE SIZES   | F                                      | G     | H       | I      | J       | K       | L       | M       | N       | O       | P       | Q       |         |
|  | <b>1</b> TOUR DE POITRINE<br>FULL BUST | 21"   | 22"     | 23"    | 24"     | 25"     | 26"     | 27"     | 28"     | 29"     | 30"     | 31"     | 32"     |
|  |  | 53 cm | 56 cm   | 58 cm  | 61 cm   | 64 cm   | 66 cm   | 69 cm   | 71 cm   | 74 cm   | 76 cm   | 79 cm   | 81 cm   |
|  | <b>2</b> TOUR DE TAILLE<br>WAIST       | 20"   | 20 1/2" | 21"    | 21 1/2" | 22"     | 22 1/2" | 23"     | 23 3/4" | 24 1/2" | 25 1/4" | 25 3/4" | 26 1/2" |
|  |  | 51 cm | 52 cm   | 53 cm  | 55 cm   | 56 cm   | 57 cm   | 58 cm   | 60 cm   | 62 cm   | 64 cm   | 66 cm   | 67 cm   |
| <b>3</b> TOUR DES HANCHES<br>HIPS  | 22"                                    | 23"   | 24"     | 25"    | 26"     | 27"     | 28"     | 29 1/2" | 30 1/2" | 32"     | 33"     | 34 1/2" |         |
|  | 56 cm                                  | 58 cm | 61 cm   | 64 cm  | 66 cm   | 69 cm   | 71 cm   | 74 cm   | 78 cm   | 81 cm   | 84 cm   | 87 cm   |         |
| <b>4</b> TRONC (DEVANT + DOS)<br>TORSO (FRONT + BACK)                            | 35"                                    | 37"   | 38 1/2" | 40"    | 41 1/2" | 43 1/4" | 45"     | 47"     | 49"     | 51"     | 53"     | 55"     |         |
|  | 89 cm                                  | 94 cm | 98 cm   | 102 cm | 105 cm  | 110 cm  | 114 cm  | 119 cm  | 124 cm  | 130 cm  | 135 cm  | 140 cm  |         |

## TISSU REQUIS - YARDAGE

| 60" / 150 cm   | JUSTAUCORPS COMPLET<br>COMPLETE LEOTARD                            | 1/2 yd | 3/4 yd | 3/4 yd | 3/4 yd | 3/4 yd | 1 yd   | 1 yd   | 1 yd   | 1 yd   | 1 yd                         | 1 1/4 yd | 1 1/4 yd |
|--|--|--------|--------|--------|--------|--------|--------|--------|--------|--------|------------------------------|----------|----------|
|  |  | 0.40 m | 0.45 m | 0.50 m | 0.55 m | 0.65 m | 0.70 m | 0.75 m | 0.80 m | 0.85 m | 0.90 m                       | 0.95 m   | 1.00 m   |
| Tissu style maillot de bain (nylon ou polyester/spandex) avec élasticité dans les DEUX sens. Doublure à maillot de bain.<br>Knit (nylon or polyester/spandex or cotton/spandex) with stretch in the length AND width. Swimwear lining. | <b>CORSAGE SEULEMENT<br/>BODICE ONLY</b>                           | 1/2 yd | 1/2 yd | 1/2 yd | 1/2 yd | 1/2 yd | 1/2 yd | 1/2 yd | 1/2 yd | 1/2 yd | 1/2 yd                       | 1/2 yd   | 1/2 yd   |
|  |  | 0.30 m | 0.35 m | 0.35 m | 0.35 m | 0.35 m | 0.35 m | 0.40 m | 0.40 m | 0.40 m | 0.40 m                       | 0.45 m   | 0.45 m   |
|  | <b>CULOTTE SEULEMENT<br/>BRIEFS ONLY</b>                           | 1/2 yd | 1/2 yd | 1/2 yd | 1/2 yd | 1/2 yd | 1/2 yd | 1/2 yd | 1/2 yd | 1/2 yd | 1/2 yd                       | 1/2 yd   | 1/2 yd   |
|  |  | 0.35 m | 0.35 m | 0.35 m | 0.40 m | 0.40 m | 0.40 m | 0.40 m | 0.40 m | 0.45 m | 0.45 m                       | 0.45 m   | 0.45 m   |
| <b>60%</b> ÉLASTICITÉ MINIMUM REQUISE (LARGEUR ET LONGUEUR)<br>MINIMUM STRETCH REQUIRED (WIDTH AND LENGTH)   | <b>VOTRE TISSU DEVRAIT S'ÉTIRER<br/>YOUR FABRIC SHOULD STRETCH</b> |        |        |        |        |        |        |        |        |        | <b>JUSQU'ICI<br/>TO HERE</b> |          |          |

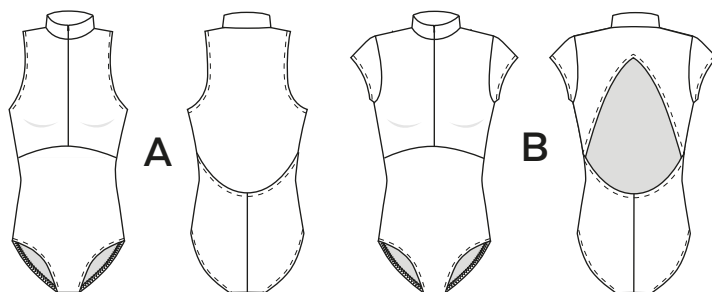
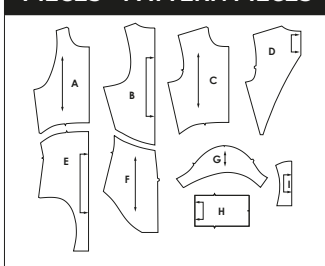
## MESURES DU CORPS (FEMMES) - BODY MEASUREMENTS (WOMEN)

| Prêt-à-porter APPROX. RTW size                    | 4   | 6   | 7   | 8   | 9       | 10  | 11      | 12      | 13      | 14  | 15      | 16      | 18  | 20      | 22  |
|---|-----|-----|-----|-----|---------|-----|---------|---------|---------|-----|---------|---------|-----|---------|-----|
| Tailles euro - European sizes                     | 34  | 36  | 37  | 38  | 39      | 40  | 41      | 42      | 43      | 44  | 45      | 46      | 48  | 50      | 52  |
| TAILLE JALIE - JALIE SIZES                        | R   | S   | T   | U   | V       | W   | X       | Y       | Z       | AA  | BB      | CC      | DD  | EE      | FF  |
| <b>1</b> TOUR DE POITRINE<br>FULL BUST            | 33" | 34" | 35" | 36" | 37"     | 38" | 39"     | 40"     | 41"     | 42" | 43"     | 44"     | 46" | 48"     | 50" |
|   | 84  | 86  | 89  | 91  | 94      | 97  | 99      | 102     | 104     | 107 | 109     | 112     | 117 | 122     | 127 |
| <b>2</b> TOUR DE TAILLE<br>WAIST                  | 27" | 28" | 29" | 30" | 31"     | 32" | 33"     | 34"     | 35"     | 36" | 37"     | 38"     | 40" | 42"     | 44" |
|   | 69  | 71  | 74  | 76  | 79      | 81  | 84      | 86      | 89      | 91  | 94      | 97      | 102 | 107     | 112 |
| <b>3</b> TOUR DES HANCHES<br>HIPS                 | 36" | 37" | 38" | 39" | 40"     | 41" | 42"     | 43"     | 44"     | 45" | 46"     | 47"     | 49" | 51"     | 53" |
|   | 91  | 94  | 97  | 99  | 102     | 104 | 107     | 109     | 112     | 114 | 117     | 119     | 124 | 130     | 135 |
| <b>4</b> TRONC (DEVANT+DOS)<br>TORSO (FRONT+BACK) | 57" | 59" | 60" | 61" | 61 3/4" | 63" | 63 1/2" | 64 1/2" | 65 1/4" | 66" | 66 1/2" | 66 1/2" | 67" | 67 1/2" | 68" |
|   | 145 | 150 | 152 | 155 | 157     | 160 | 161     | 164     | 166     | 168 | 168     | 169     | 170 | 171     | 173 |

## TISSU REQUIS - YARDAGE

|   |          |          |          |          |          |          |          |          |          |          |          |          |          |          |          |
|---|----------|----------|----------|----------|----------|----------|----------|----------|----------|----------|----------|----------|----------|----------|----------|
| <b>JUSTAUCORPS COMPLET<br/>COMPLETE LEOTARD</b> | 1 1/4 yd | 1 1/4 yd | 1 1/4 yd | 1 1/4 yd | 1 1/4 yd | 1 1/4 yd | 1 1/4 yd | 1 1/2 yd | 1 1/2 yd | 1 1/2 yd | 1 1/2 yd | 1 1/2 yd | 1 1/2 yd | 1 1/2 yd | 1 1/2 yd |
|   | 1.00 m   | 1.05 m   | 1.10 m   | 1.10 m   | 1.10 m   | 1.10 m   | 1.10 m   | 1.25 m   | 1.25 m   | 1.25 m   | 1.25 m   | 1.25 m   | 1.25 m   | 1.25 m   | 1.25 m   |
| <b>CORSAGE SEULEMENT<br/>BODICE ONLY</b>        | 1/2 yd   | 1/2 yd   | 1/2 yd   | 1/2 yd   | 1/2 yd   | 3/4 yd   | 3/4 yd   | 3/4 yd   | 3/4 yd   | 3/4 yd   | 3/4 yd   | 3/4 yd   | 3/4 yd   | 3/4 yd   | 3/4 yd   |
|   | 0.45 m   | 0.45 m   | 0.45 m   | 0.45 m   | 0.45 m   | 0.50 m   | 0.50 m   | 0.50 m   | 0.50 m   | 0.50 m   | 0.50 m   | 0.50 m   | 0.50 m   | 0.50 m   | 0.50 m   |
| <b>CULOTTE SEULEMENT<br/>BRIEFS ONLY</b>        | 3/4 yd   | 3/4 yd   | 3/4 yd   | 3/4 yd   | 3/4 yd   | 3/4 yd   | 3/4 yd   | 3/4 yd   | 3/4 yd   | 3/4 yd   | 3/4 yd   | 3/4 yd   | 3/4 yd   | 3/4 yd   | 3/4 yd   |
|   | 0.50 m   | 0.50 m   | 0.50 m   | 0.50 m   | 0.50 m   | 0.55 m   | 0.55 m   | 0.55 m   | 0.55 m   | 0.55 m   | 0.55 m   | 0.55 m   | 0.55 m   | 0.65 m   | 0.65 m   |

## PIÈCES - PATTERN PIECES



## MERCERIE - NOTIONS

| FERMETURE À GLISSIÈRE INVISIBLE<br>INVISIBLE ZIPPER |             | ÉLASTIQUE 1 CM<br>3/8" ELASTIC |                  | DOUBLURE À MAILLOT DE BAIN<br>SWIMWEAR LINING |             |
|---|-------------|--------------------------------|------------------|---|-------------|
| F-K   | 30 cm (12") | F-T                            | 2 m (2 1/4 yd)   | F-O   | 40 cm (16") |
| L-O   | 35 cm (14") | S-FF                           | 2.5 m (2 3/4 yd) | P-FF  | 50 cm (20") |
| P-R   | 40 cm (16") |                                |                  |   |             |
| S-FF  | 45 cm (18") |                                |                  |   |             |

**PRÊT À COUDRE // READY TO SEW**  
 ressources de couture (6 mm / 1/4") incluses dans le patron  
 6 mm / 1/4" seam allowances included in the pattern



8303692

*Jalie*  
 PATRONS DE COUDRE  
 SEWING PATTERNS

© 2018 LES PATRONS JALIE INC.  
 www.jalie.com  
 IMPRIMÉ AU CANADA / PRINTED IN CANADA