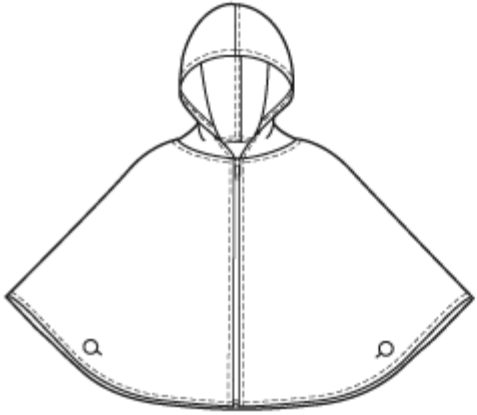


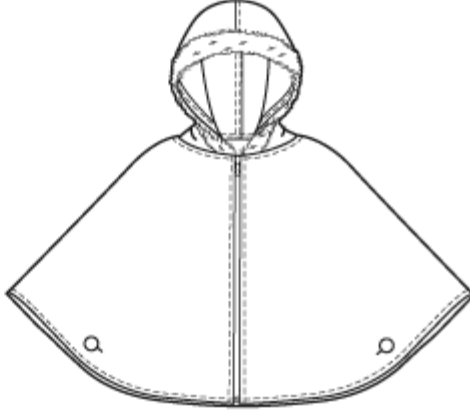
Line Art & Yardage Information

Front

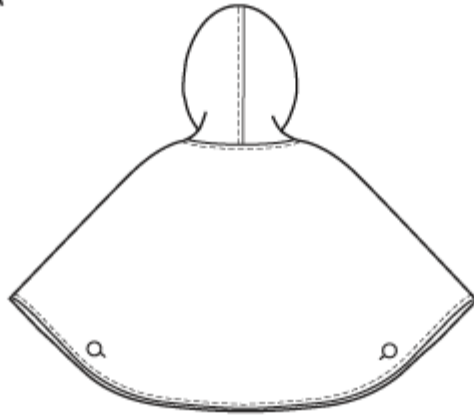


A

Front

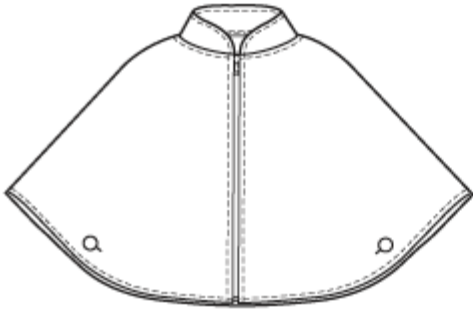


B

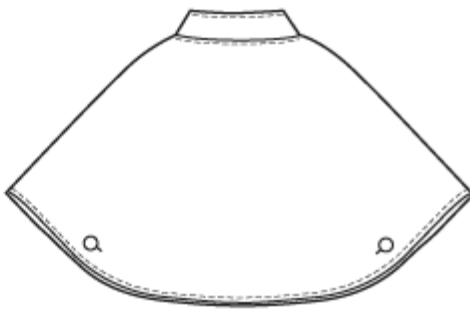


AB

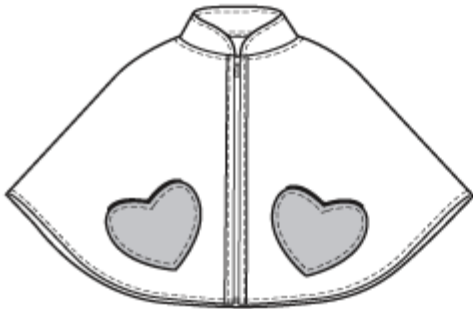
Front



C

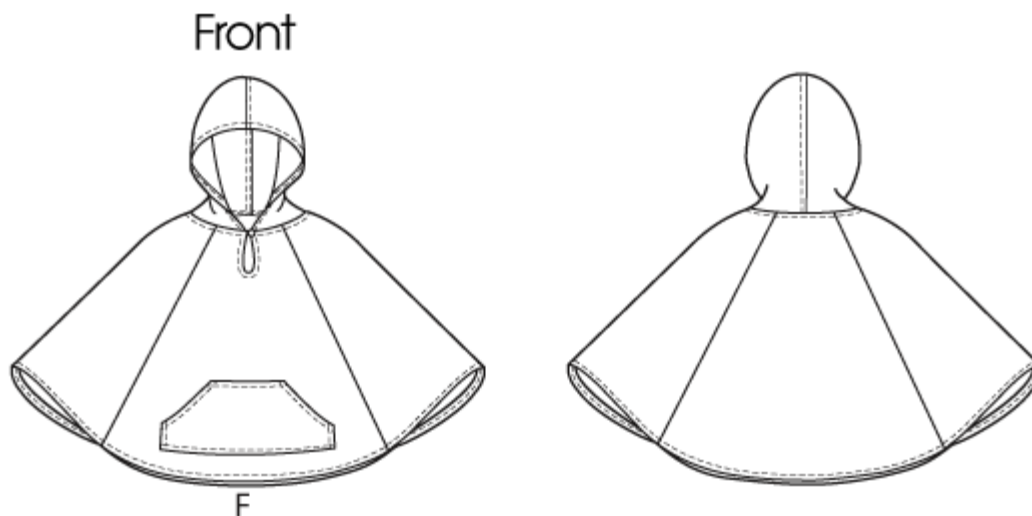
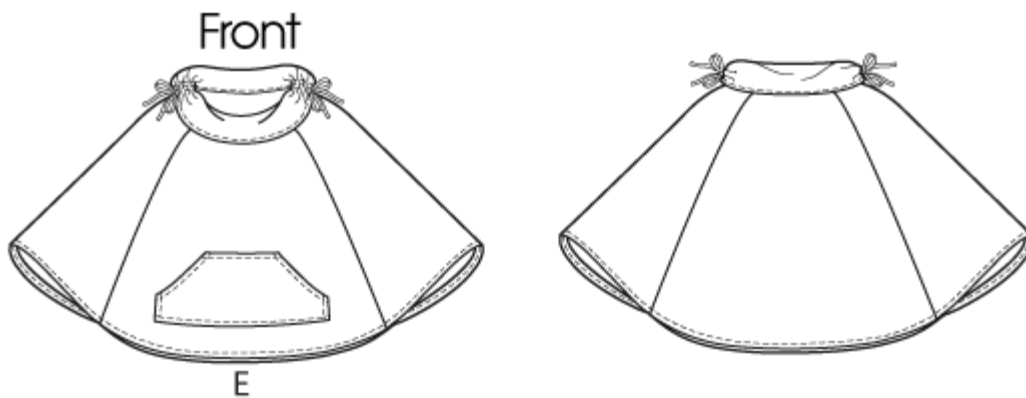


Front



D





**CHILDREN'S/GIRLS' PONCHOS:** Loose fitting, unlined ponchos. **A,B,C:** Exposed zipper teeth. **D:** Top applied zipper. **E:** Ribbon drawstrings in collar. **F:** Button and thread loop closure. Included are fleece and vinyl tips.

Designed for medium weight to heavy weight wovens, stable knits and vinyl.

**SUGGESTED FABRICS:** Wools, Fleece, Gabardine, **A,B,C,D,F:** Also Vinyl.

**NOTIONS:**

**A,B,C,D:** Separating Zipper; 18" for Sizes XS,S and 22" for M,L,XL.

**A,B,C:** Four 1" Buttons.

**B:** 1 yd. of 1 $\frac{1}{2}$ " - 2" Fur Trim; **Note:** Not for Vinyl.

**E:** 2 yds. of  $\frac{3}{8}$ " Ribbon.

**F:** One  $\frac{1}{2}$ " Button.

\* With Nap \*\*Without Nap \*\*\*With or Without Nap

Combinations: **CX**[X-Small,Small], **CZ**[Medium,Large,XLarge]

**Fabric widths given in inches.**

SIZES	Children's		Girls'			yds
	XS 3-4	S 5-6	M 7-8	L 10-12	XL 14-16	
<b>A,B</b> 45"***	1 $\frac{3}{8}$	1 $\frac{1}{2}$	1 $\frac{5}{8}$	1 $\frac{3}{4}$	1 $\frac{7}{8}$	

60"****	1 <sup>1</sup> / <sub>8</sub>	1 <sup>1</sup> / <sub>8</sub>	1 <sup>1</sup> / <sub>4</sub>	1 <sup>3</sup> / <sub>8</sub>	1 <sup>1</sup> / <sub>2</sub>	yds
<b>C,D</b>						
45"****	1 <sup>1</sup> / <sub>4</sub>	1 <sup>3</sup> / <sub>8</sub>	1 <sup>1</sup> / <sub>2</sub>	1 <sup>5</sup> / <sub>8</sub>	1 <sup>5</sup> / <sub>8</sub>	yds
60"****	1	1	1 <sup>1</sup> / <sub>4</sub>	1 <sup>1</sup> / <sub>4</sub>	1 <sup>3</sup> / <sub>8</sub>	yds
<b>CONTRAST D</b>						
45",60"****	1/4	1/4	1/4	1/4	1/4	yd
<b>SEW-IN INTERFACING C,D</b>						
18",20"	3/4	3/4	3/4	3/4	3/4	yd
<b>E</b>						
45"*	1 <sup>7</sup> / <sub>8</sub>	1 <sup>7</sup> / <sub>8</sub>	2 <sup>1</sup> / <sub>8</sub>	2 <sup>1</sup> / <sub>4</sub>	2 <sup>3</sup> / <sub>8</sub>	yds
45"***	1 <sup>5</sup> / <sub>8</sub>	1 <sup>3</sup> / <sub>4</sub>	1 <sup>7</sup> / <sub>8</sub>	2	2 <sup>1</sup> / <sub>8</sub>	yds
60"****	1 <sup>3</sup> / <sub>8</sub>	1 <sup>1</sup> / <sub>2</sub>	1 <sup>3</sup> / <sub>4</sub>	1 <sup>3</sup> / <sub>4</sub>	1 <sup>7</sup> / <sub>8</sub>	yds
<b>F</b>						
45"*	1 <sup>5</sup> / <sub>8</sub>	1 <sup>3</sup> / <sub>4</sub>	2 <sup>1</sup> / <sub>8</sub>	2 <sup>3</sup> / <sub>8</sub>	2 <sup>7</sup> / <sub>8</sub>	yds
45"***	1 <sup>3</sup> / <sub>4</sub>	1 <sup>7</sup> / <sub>8</sub>	2	2 <sup>1</sup> / <sub>8</sub>	2 <sup>1</sup> / <sub>4</sub>	yds
60"****	1 <sup>3</sup> / <sub>8</sub>	1 <sup>1</sup> / <sub>2</sub>	1 <sup>3</sup> / <sub>4</sub>	1 <sup>7</sup> / <sub>8</sub>	2	yds
<b>SEW-IN INTERFACING F</b>						
18",20"	1/4	1/4	1/4	1/4	1/4	yd
<b>FINISHED GARMENT MEASUREMENTS</b>						
<b>Back length from base of you neck</b>						
A,B,C,D	20 1/2	24 1/2	28 3/4	30 3/4	36 3/4	ins
E,F	19 1/2	23 1/2	27 3/4	29 3/4	35 3/4	ins

**Fabric widths given in centimeters.**

SIZES	Children's		Girls'			
	XS 3-4	S 5-6	M 7-8	L 10-12	XL 14-16	
<b>A,B</b>						
115cm****	1.3	1.4	1.5	1.6	1.7	m
150cm****	1.0	1.0	1.1	1.3	1.4	m
<b>C,D</b>						
115cm****	1.1	1.3	1.4	1.5	1.5	m
150cm****	0.9	0.9	1.1	1.1	1.3	m
<b>CONTRAST D</b>						
115cm,150cm****	0.2	0.2	0.2	0.2	0.2	m
<b>SEW-IN INTERFACING C,D</b>						
46cm,51cm	0.7	0.7	0.7	0.7	0.7	m
<b>E</b>						
115cm*	1.7	1.7	1.9	2.1	2.2	m
115cm**	1.5	1.6	1.7	1.8	1.9	m
150cm****	1.3	1.4	1.6	1.6	1.7	m
<b>F</b>						
115cm*	1.5	1.6	1.9	2.2	2.6	m

115cm**	1.6	1.7	1.8	1.9	2.1	m
150cm***	1.3	1.4	1.6	1.7	1.8	m
<b>SEW-IN INTERFACING F</b>						
46cm,51cm	0.2	0.2	0.2	0.2	0.2	m
<b>FINISHED GARMENT MEASUREMENTS</b>						
<b>Back length from base of you neck</b>						
A,B,C,D	52	62	73	78	93	cm
E,F	50	60	70	76	91	cm