

# M7831

**MISSES' JUMPERS:** All jumpers have adjustable straps which fasten with purchased overall buckles. **B, C, D:** Pockets.

**CHASUBLES POUR JEUNE FEMME:** Toutes les chasubles avec des bretelles réglables fermées par des boucles de salopette achetées. **B, C, D:** Poches.

**JUMPERS PARA JÓVENES Y SEÑORAS:** Todos los jumpers tienen tirantes regulables cerrados con hebillas de overol compradas. **B, C, D:** Bolsillos.

Combinations: **AX5(4-6-8-10-12), D5(12-14-16-18-20)**

**SUGGESTED FABRICS:** Corduroy, Denim, Cotton Blends, Velveteen.

Séries/Combinaciones: **AX5(4-6-8-10-12), D5(12-14-16-18-20)**

**TISSUS CONSEILLÉS:** Velours côtelé, Denim, Cotonnade, Velours de coton.  
**TELAS SUGERIDAS:** Corduroy, Denim, Mezclas de algodón, Terciopelo de algodón.

SIZES	4	6	8	10	12	14	16	18	20
<b>A</b> 45"***	1½	1½	1½	1⅝	1⅝	1¾	1¾	1⅞	1⅞
60"***	1¼	1¼	1¼	1¼	1¼	1¼	1¼	1⅜	1½
<b>B</b> 45"***	1¾	1¾	1¾	1¾	1¾	1¾	1⅞	1⅞	1⅞
60"***	1¼	1¼	1¼	1¼	1¼	1⅜	1⅜	1½	1½
<b>C</b> 45"***	1¾	1¾	1¾	1¾	1¾	1¾	1⅞	1⅞	1⅞
60"***	1¼	1¼	1¼	1⅜	1⅜	1½	1½	1½	1½
<b>D</b> 45"***	2	2	2	2	2	2⅛	2⅛	2¼	2¼
60"***	1⅝	1⅝	1⅝	1⅝	1⅝	1⅝	1⅝	1⅝	1⅝

**FUSIBLE INTERFACING A, B, C, D**

18", 20" - 1⅞ yds.

**NOTIONS:** Two Overall Buckles with No-Sew Buttons to fit 1¼" Straps.

TAILLES/TALLAS	4	6	8	10	12	14	16	18	20
<b>A</b> 115cm***	1.40	1.40	1.40	1.50	1.50	1.60	1.60	1.80	1.80
150cm***	1.20	1.20	1.20	1.20	1.20	1.20	1.20	1.30	1.40
<b>B</b> 115cm***	1.60	1.60	1.60	1.60	1.60	1.60	1.80	1.80	1.80
150cm***	1.20	1.20	1.20	1.20	1.20	1.30	1.30	1.40	1.40
<b>C</b> 115cm***	1.60	1.60	1.60	1.60	1.60	1.60	1.80	1.80	1.80
150cm***	1.20	1.20	1.20	1.30	1.30	1.40	1.40	1.40	1.40
<b>D</b> 115cm***	1.90	1.90	1.90	1.90	1.90	2.00	2.00	2.10	2.10
150cm***	1.50	1.50	1.50	1.50	1.50	1.50	1.50	1.50	1.50

**ENTOILAGE THERMOCOLLANT/ENTRETELA TERMOADHESIVA A, B, C, D**  
46, 51cm - 1.80m

**MERCERIE:** 2 Boucles de salopette à boutons non cousus pour des bretelles de 3.2cm.

**MERCERÍA:** 2 Hebillas de overol con botones de aplicación sin costura para tirantes de 3.2cm.

**MESURES DU VÊTEMENT FIN/MEDIDAS DE LA PRENDA ACABADA**

**Mesure aux hanches/Contorno de caderas**

A, B, C 93 95 98 100 104 109 115 120 125

**Largeur à l'ourlet/Ancho inferior**

A, B, C 104 107 109 112 116 121 126 131 136

**Longueur - dos, votre nuque à l'ourlet/Largo de espalda desde la nuca**

A, B, C, D 80 80 81 81 82 83 83 84 85

\*Avec Sens \*\*Sans Sens \*\*\*Avec ou Sans Sens \*Con Pelillo \*\*Sin Pelillo \*\*\*Con o Sin Pelillo

## FINISHED GARMENT MEASUREMENTS

**Measurement at hip**

A, B, C 36½ 37½ 38½ 39½ 41 43 45 47 49

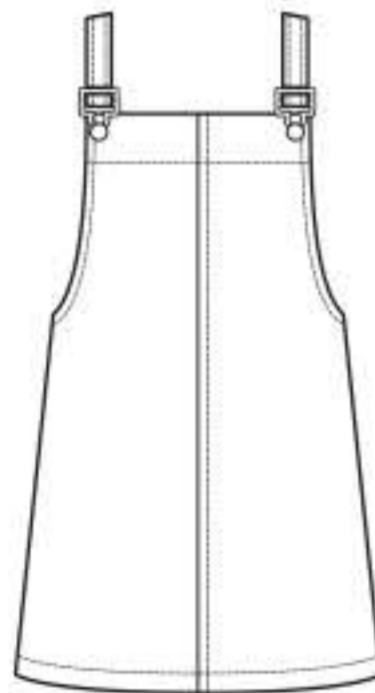
**Width, lower edge**

A, B, C 41 42 43 44 45½ 47½ 49½ 51½ 53½

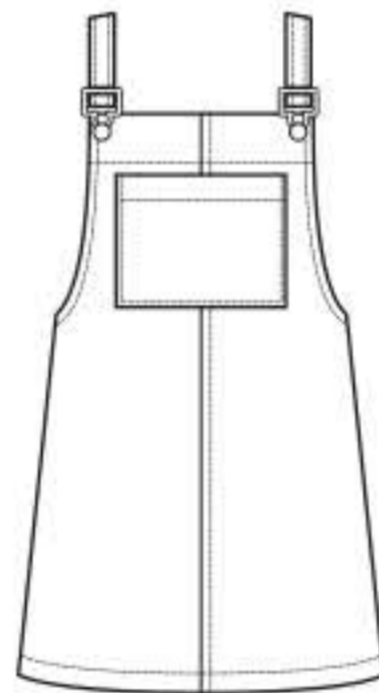
**Back length from base of neck**

A, B, C, D 31¼ 31½ 31¾ 32 32¼ 32½ 32¾ 33 33¼

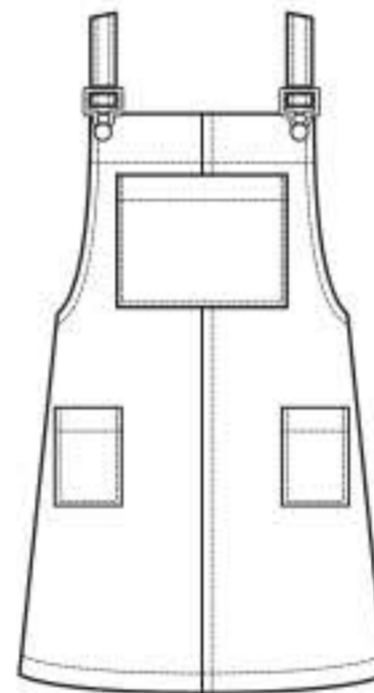
\*With Nap \*\*Without Nap \*\*\*With or Without Nap



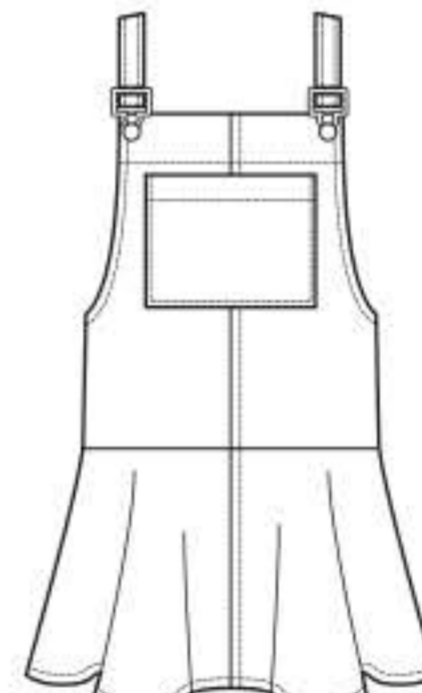
**A**



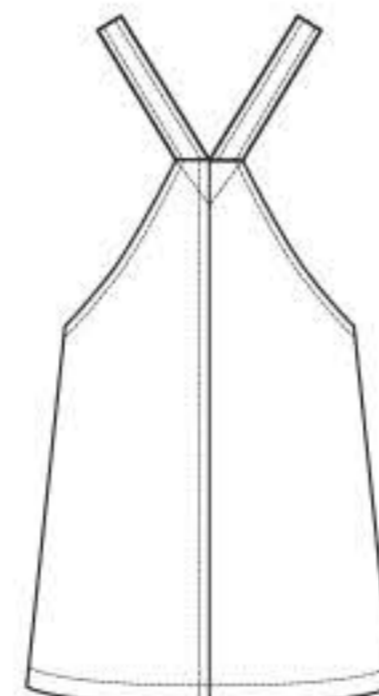
**B**



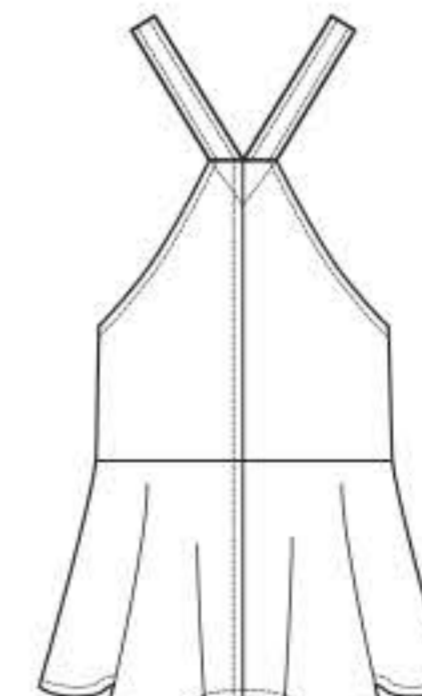
**C**



**D**



**A-B-C**



**D**

